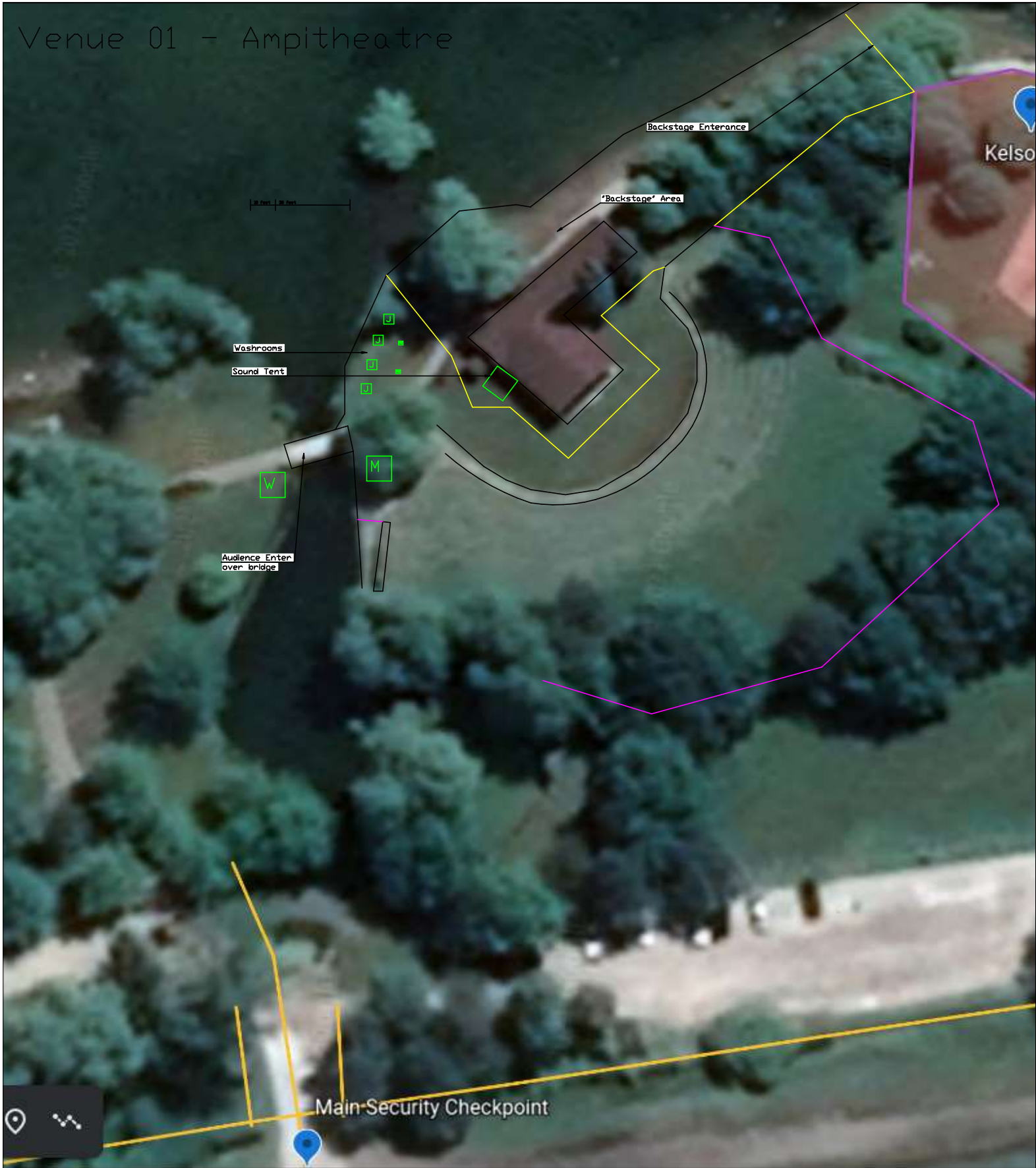


Venue 01 - Ampitheatre



Venue: Kelso Park Ampitheatre
Scale: Not to Scale
Note: Drawing is estimated

Summerfolk 2021 Venue Infosheet

| | | | |
|-----------------------|----------------------------|----------------------|-----|
| Venue #: | 1 | Contact: | |
| Venue Name: | Kelso Amphitheatre | Contact #: | |
| Address: | 2nd Ave West | # of patrons: | 100 |
| Venue Manager: | Indrani Mahadeo | Contact #: | |
| Technician: | FOH: Andrew Moyer MONS: | Contact #: | |
| Stage Manager: | | Contact #: | |

| | | | |
|-------------------------|------------------------|--------------------------|----------|
| House Area: | 3100m ² est | Stage Area: | ? 25x25? |
| House Perimeter: | 250m est | Stage to be used: | Concrete |

Electrical:

2x100a 120/600v 4c 3p + Several 15A and 20A circuits all located backstage.
Will require additional light installed for security, tech time and load out. This includes a light in the rafters over the stage (top of trusses, not under), and several lights inside the picnic shelter.

Audio:

TBD

Storage:

Under cover of stage building; overnight security.

Tents:

Greeting 10x10, Merch 10x10, Monitors 10x10

Layout:

[Layout Venue 1 #1](#) .

Site:

Fencing must fully enclose. Audience with enter/exit over bridge to the North, emergency exit and crew/performer entrance backstage where instrument lockup would typically be. Fencing as well to delineate backstage to "house". FOH trailer on top of hill in typical location and

fenced in as usual.

Parking Info:

Crew/Volunteer parking at south inside. Patron parking south/middle outside.



VENUE 2 - Kelso North
Scale : Not To Scale

Amphitheatre

Hill

Family
Village
Venue: Ø3

Playground

Splash
Pad

Craft Village

10' x 10' Gazebo
10' x 10'
10' x 10'
10' x 10'

10' x 10'

Bathrooms

[]

M

W

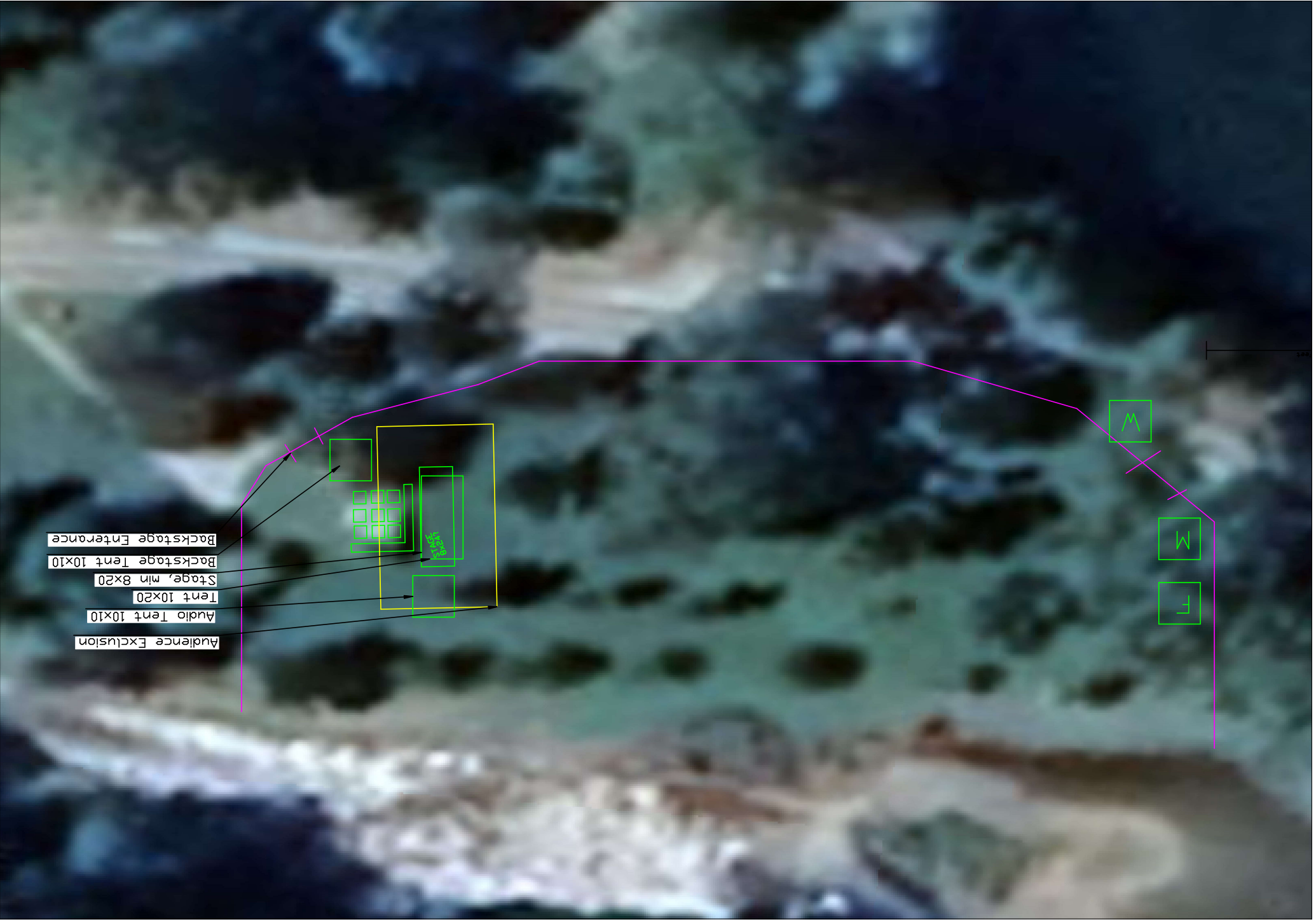
FA

Down
By the river
Tent
30' x 40'

Inside
Parking lot



Venue 04 - Harrison Park "Field"
Scale: Not To Scale



Venue 05 - Harrison Black History Cairn
Scale: Not to Scale



Venue 07 - Rail Museum
Scale : UNK

Measurements are Approximate