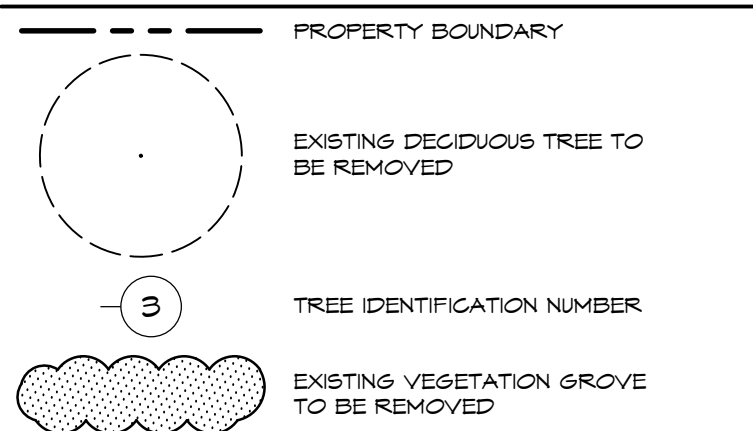


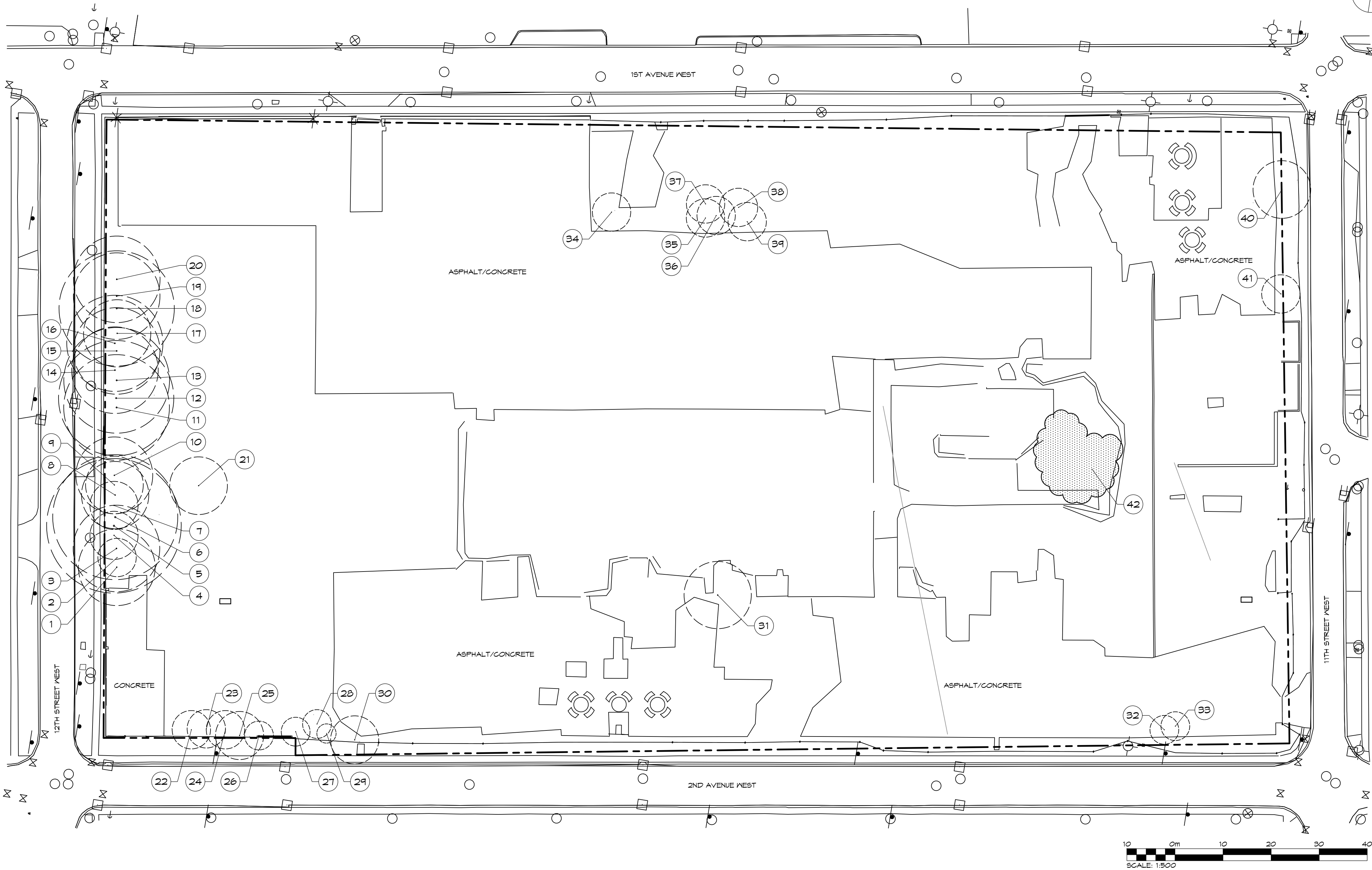
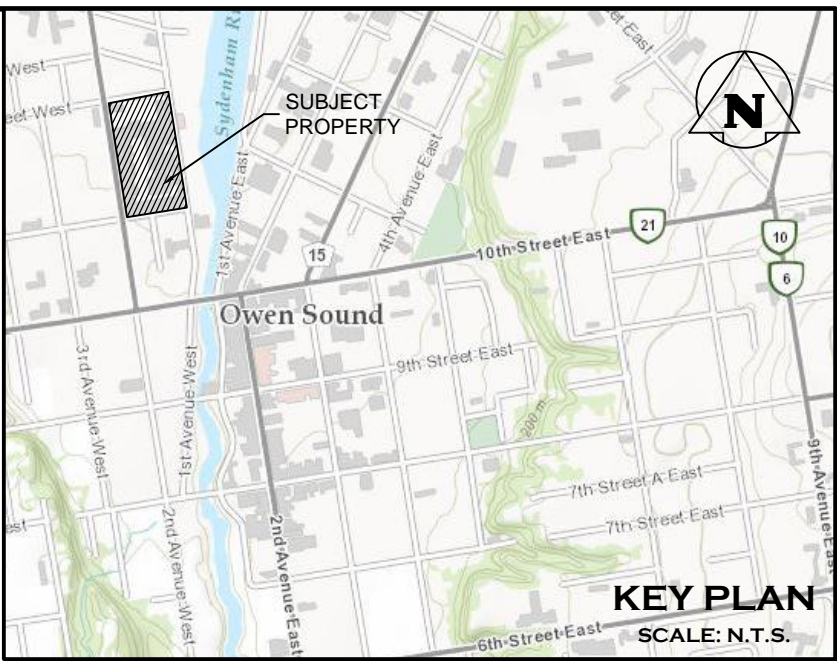
LEGEND



NOTES:

1.0 TREE REMOVAL RATIONAL

- ALL EXISTING TREES LOCATED WITHIN THE VEGETATION TO BE REMOVED AREA ARE TO BE REMOVED DUE TO CONFLICTS WITH THE PROPOSED GRADING AND/OR SERVING OF THE SITE DEVELOPMENT. THE CONFLICTS ARE UNAVOIDABLE.
- FOR SERVING, GRADINGS AND DRAINAGE INFORMATION SEE ENGINEERING DRAWINGS.
- THE CONTRACTOR SHALL CHECK AND VERIFY ALL EXISTING AND PROPOSED GRADES AND CONDITIONS OF THE PROJECT AND IMMEDIATELY REPORT ANY DISCREPANCIES TO THE CONSULTANT BEFORE PROCEEDING WITH ANY REMOVALS.
- TREE REMOVALS SHALL CONFORM WITH THE MIGRATORY BIRDS CONVENTION ACT AND MUNICIPAL BY-LAWS.



TREE INVENTORY & ASSESSMENT CHART

ID No.	Botanical Name	Common Name	Trunk DBH (cm) (Diameter at Breast Height)	Canopy Radius (m)	Condition	Retain/Remove
1	<i>Populus deltoides</i>	Eastern Cottonwood	189	8	Good/Fair	Remove
2	<i>Populus deltoides</i>	Eastern Cottonwood	141	4	Good/Fair	Remove
3	<i>Populus deltoides</i>	Eastern Cottonwood	163	9	Good/Fair	Remove
4	<i>Populus deltoides</i>	Eastern Cottonwood	115	5	Good/Fair	Remove
5	<i>Populus deltoides</i>	Eastern Cottonwood	153	14	Good/Fair	Remove
6	<i>Populus deltoides</i>	Eastern Cottonwood	153	13	Good/Fair	Remove
7	<i>Populus deltoides</i>	Eastern Cottonwood	124	5	Good/Fair	Remove
8	<i>Populus deltoides</i>	Eastern Cottonwood	136	7	Good/Fair	Remove
9	<i>Populus deltoides</i>	Eastern Cottonwood	142	6	Good/Fair	Remove
10	<i>Populus deltoides</i>	Eastern Cottonwood	160	8	Good/Fair	Remove
11	<i>Populus deltoides</i>	Eastern Cottonwood	130/140	11	Good/Fair	Remove
12	<i>Populus deltoides</i>	Eastern Cottonwood	174	12	Fair	Remove
13	<i>Populus deltoides</i>	Eastern Cottonwood	128	11	Fair	Remove
14	<i>Populus deltoides</i>	Eastern Cottonwood	156	9	Good/Fair	Remove
15	<i>Populus deltoides</i>	Eastern Cottonwood	145	9	Good/Fair	Remove
16	<i>Populus deltoides</i>	Eastern Cottonwood	152	10	Good/Fair	Remove
17	<i>Populus deltoides</i>	Eastern Cottonwood	177	7	Good/Fair	Remove
18	<i>Populus deltoides</i>	Eastern Cottonwood	153	12	Good/Fair	Remove
19	<i>Populus deltoides</i>	Eastern Cottonwood	246	9	Fair	Remove
20	<i>Populus deltoides</i>	Eastern Cottonwood	190	9	Good/Fair	Remove
21	<i>Acer platanoides</i>	Norway Maple	166	6	Fair	Remove
22	<i>Acer negundo</i>	Manitoba Maple	46/40	4	Fair	Remove
23	<i>Juglans nigra</i>	Black Walnut	63	4	Fair	Remove
24	<i>Juglans nigra</i>	Black Walnut	63	4	Fair	Remove
25	<i>Acer negundo</i>	Manitoba Maple	50	5	Fair	Remove
26	<i>Acer negundo</i>	Manitoba Maple	36	3	Fair/Poor	Remove
27	<i>Acer negundo</i>	Manitoba Maple	34	3	Fair/Good	Remove
28	<i>Acer negundo</i>	Manitoba Maple	35	2	Fair/Good	Remove
29	<i>Acer platanoides</i>	Norway Maple	47	5	Good	Remove
30	<i>Acer negundo</i>	Manitoba Maple	48	5	Fair	Remove
31	<i>Elaeagnaceae angustifolia</i>	Russian Olive	77/80	7	Fair/Good	Remove
32	<i>Robinia pseudoacacia</i>	Black Locust	33	3	Excellent	Remove
33	<i>Robinia pseudoacacia</i>	Black Locust	26	3	Excellent	Remove
34	<i>Betula pendula</i>	Silver Birch	63	4	Good	Remove
35	<i>Betula pendula</i>	Silver Birch	56	4	Good	Remove
36	<i>Betula pendula</i>	Silver Birch	50	4	Good	Remove
37	<i>Betula pendula</i>	Silver Birch	33	4	Good	Remove
38	<i>Robinia pseudoacacia</i>	Black Locust	40	4	Fair	Remove
39	<i>Robinia pseudoacacia</i>	Black Locust	30	4	Excellent	Remove
40	<i>Betula pendula</i>	Silver Birch	66	6	Good	Remove
41	<i>Betula pendula</i>	Silver Birch	32	4	Good	Remove
42	Grove primarily comprised of <i>Robinia pseudoacacia</i>	Black Locust	-	-	Fair-Good	Remove

- THIS DRAWING IS THE EXCLUSIVE PROPERTY OF C.F. CROZIER & ASSOCIATES INC. AND THE REPRODUCTION OF ANY PART WITHOUT PRIOR WRITTEN CONSENT OF THIS OFFICE IS STRICTLY PROHIBITED.
- THE CONTRACTOR SHALL VERIFY ALL DIMENSIONS, LEVELS, AND DATUMS ON SITE AND REPORT ANY DISCREPANCIES OR OMISSIONS TO THIS OFFICE PRIOR TO CONSTRUCTION.
- THIS DRAWING IS TO BE READ AND UNDERSTOOD IN CONJUNCTION WITH ALL OTHER PLANS AND DOCUMENTS APPLICABLE TO THIS PROJECT.
- DO NOT SCALE THE DRAWINGS.
- ALL EXISTING UNDERGROUND UTILITIES TO BE VERIFIED IN THE FIELD BY THE CONTRACTOR PRIOR TO CONSTRUCTION.

NOTES:

- TOPOGRAPHIC SURVEY PLAN PROVIDED BY JOETOPO SURVEYS & CADD INC. (RECEIVED AUGUST 10, 2021).
- ALL DIMENSIONS ARE IN METERS UNLESS OTHERWISE NOTED.

Town

No. ISSUE / REVISION

- ISSUED FOR 1st SUBMISSION
- ISSUED FOR 2ND SUBMISSION

DATE: YYYY.MM.DD

2021.12.10  
2022.03.24

LANDSCAPE ARCHITECT



LANDSCAPE ARCHITECT

Project

1144 FIRST AVENUE WEST  
CITY OF OWEN SOUND

Drawing

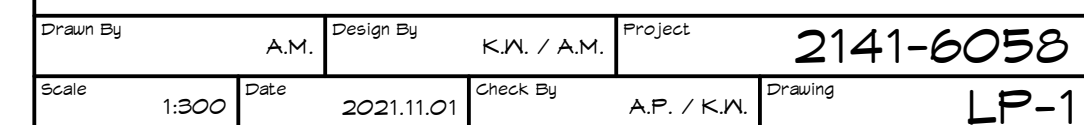
TREE MANAGEMENT PLAN



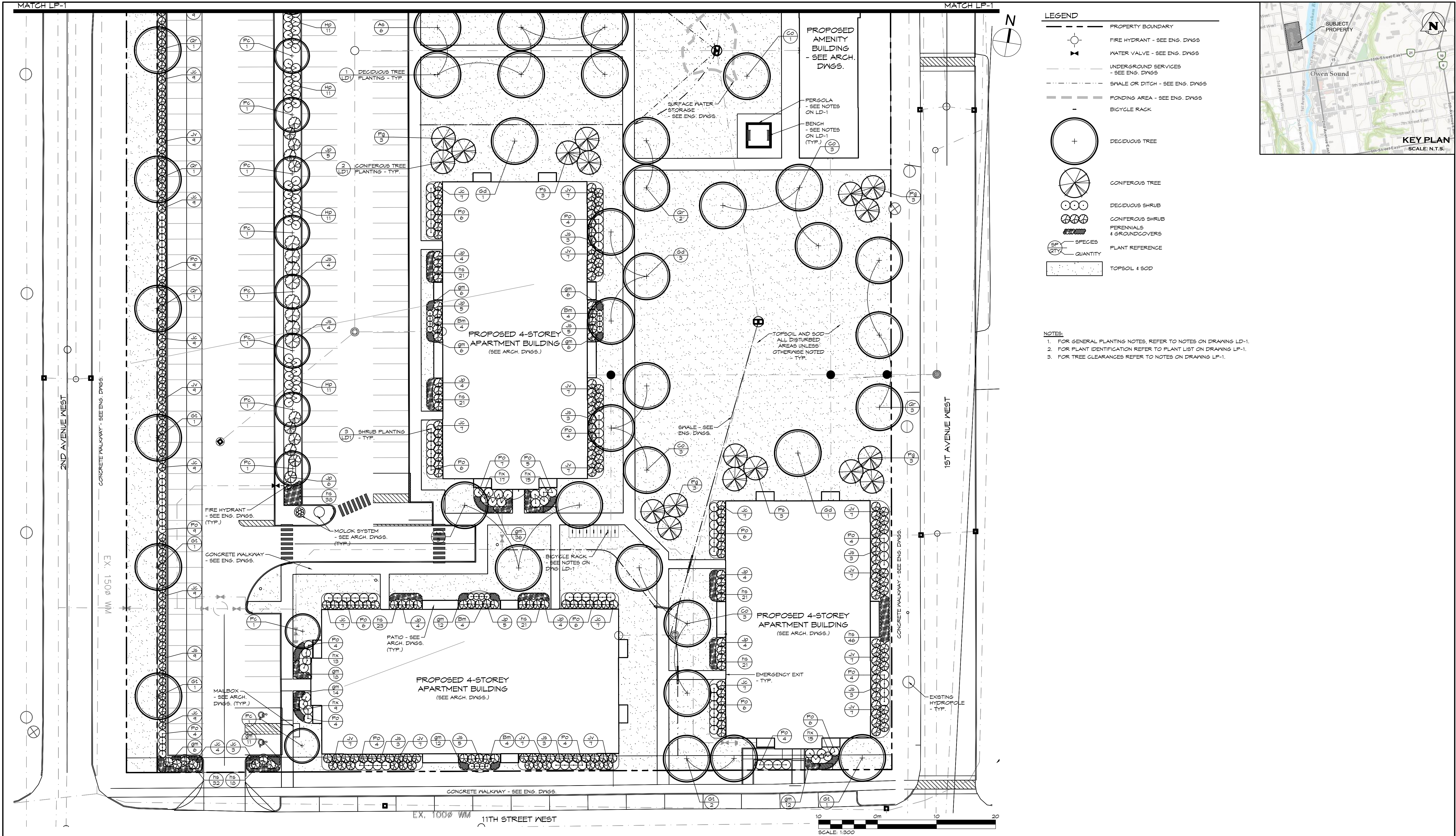
ADMIRAL BUILDING  
1 FIRST STREET, SUITE 200  
COLLINGWOOD, ON L9Y 1A1  
705 446-3510 T  
705 446-3520 F  
WWW.CFCROZIER.CA  
INFO@CFCROZIER.CA

Drawn By A.M. Design By K.J.N. / A.M. Project 2141-6058  
Scale 1:500 Date 2021.11.01 Check By A.P. / K.J.N. Drawing TMP-1







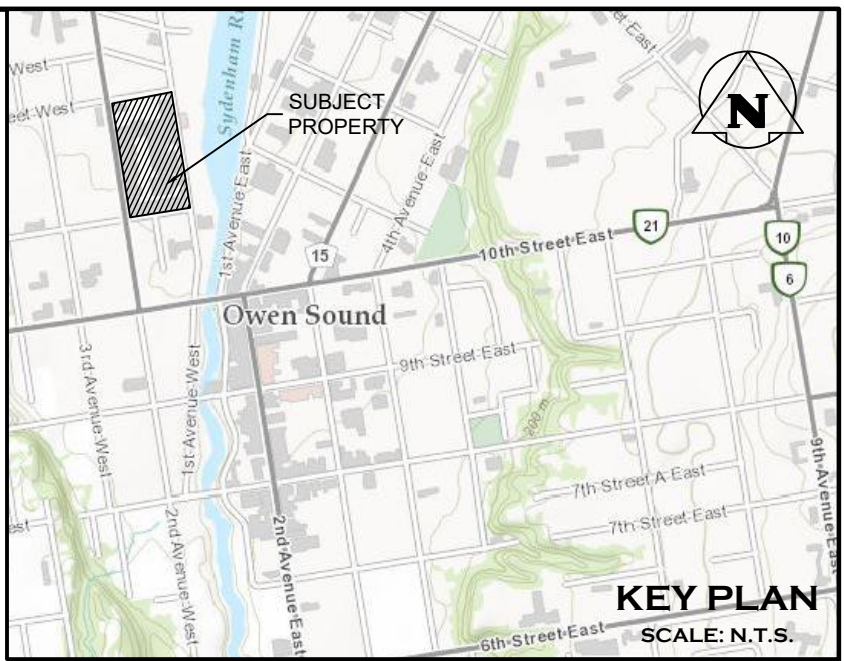


**LEGEND**

- PROPERTY BOUNDARY
- FIRE HYDRANT - SEE ENG. DWGS
- WATER VALVE - SEE ENG. DWGS
- UNDERGROUND SERVICES - SEE ENG. DWGS
- SWALE OR DITCH - SEE ENG. DWGS
- PONDING AREA - SEE ENG. DWGS
- BICYCLE RACK
- DECIDUOUS TREE
- CONIFEROUS TREE
- DECIDUOUS SHRUB
- CONIFEROUS SHRUB
- PERENNIALS & GROUNDCOVERS
- SPECIES
- QUANTITY
- PLANT REFERENCE
- TOPSOIL & SOD

**NOTES:**

- FOR GENERAL PLANTING NOTES, REFER TO NOTES ON DRAWING LP-1.
- FOR PLANT IDENTIFICATION REFER TO PLANT LIST ON DRAWING LP-1.
- FOR TREE CLEARANCES REFER TO NOTES ON DRAWING LP-1.



1. THIS DRAWING IS THE EXCLUSIVE PROPERTY OF C.F. CROZIER & ASSOCIATES INC. AND THE REPRODUCTION OF ANY PART WITHOUT PRIOR WRITTEN CONSENT OF THIS OFFICE IS STRICTLY PROHIBITED.

2. THE CONTRACTOR SHALL VERIFY ALL DIMENSIONS, LEVELS, AND DATUMS ON SITE AND REPORT ANY DISCREPANCIES OR OMISSIONS TO THIS OFFICE PRIOR TO CONSTRUCTION.

3. THIS DRAWING IS TO BE READ AND UNDERSTOOD IN CONJUNCTION WITH ALL OTHER PLANS AND DOCUMENTS APPLICABLE TO THIS PROJECT.

4. DO NOT SCALE THE DRAWINGS.

5. ALL EXISTING UNDERGROUND UTILITIES TO BE VERIFIED IN THE FIELD BY THE CONTRACTOR PRIOR TO CONSTRUCTION.

**NOTES:**

- ALL DIMENSIONS ARE IN METERS UNLESS OTHERWISE NOTED.

Town

No. ISSUE / REVISION

1. ISSUED FOR 1st SUBMISSION

2. ISSUED FOR 2ND SUBMISSION

DATE: YYYY.MM.DD

2021.12.10

2022.03.24

LANDSCAPE ARCHITECT



LANDSCAPE ARCHITECT

Project

1144 FIRST AVENUE WEST  
CITY OF OWEN SOUND

Drawing

LANDSCAPE PLAN

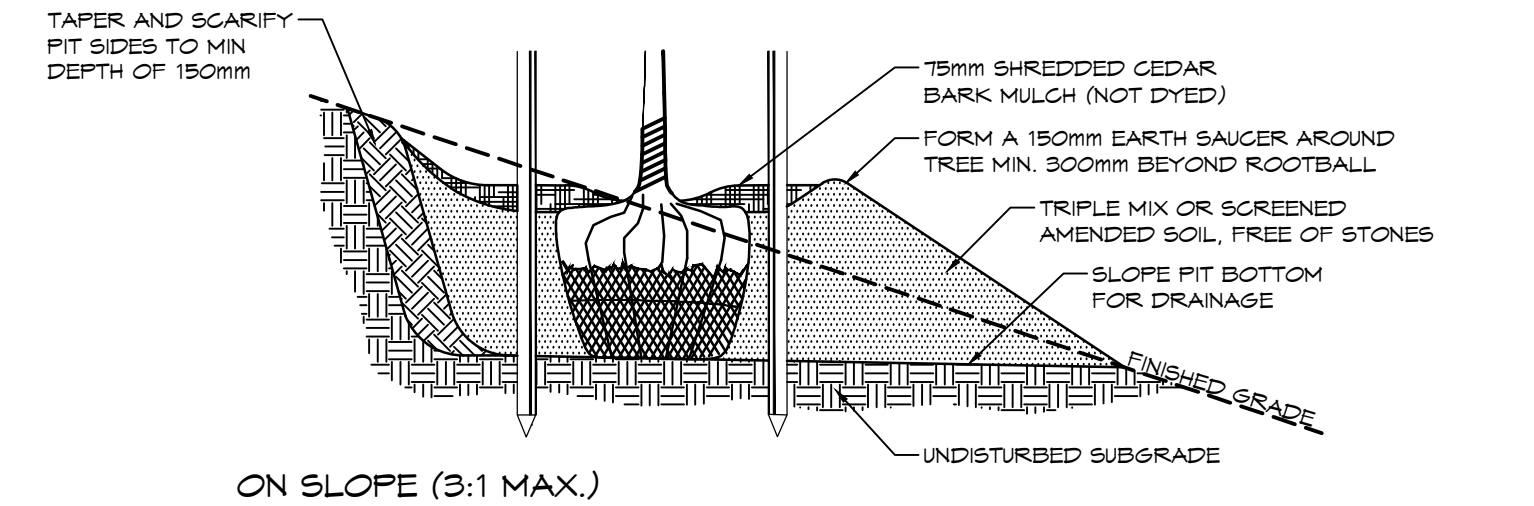
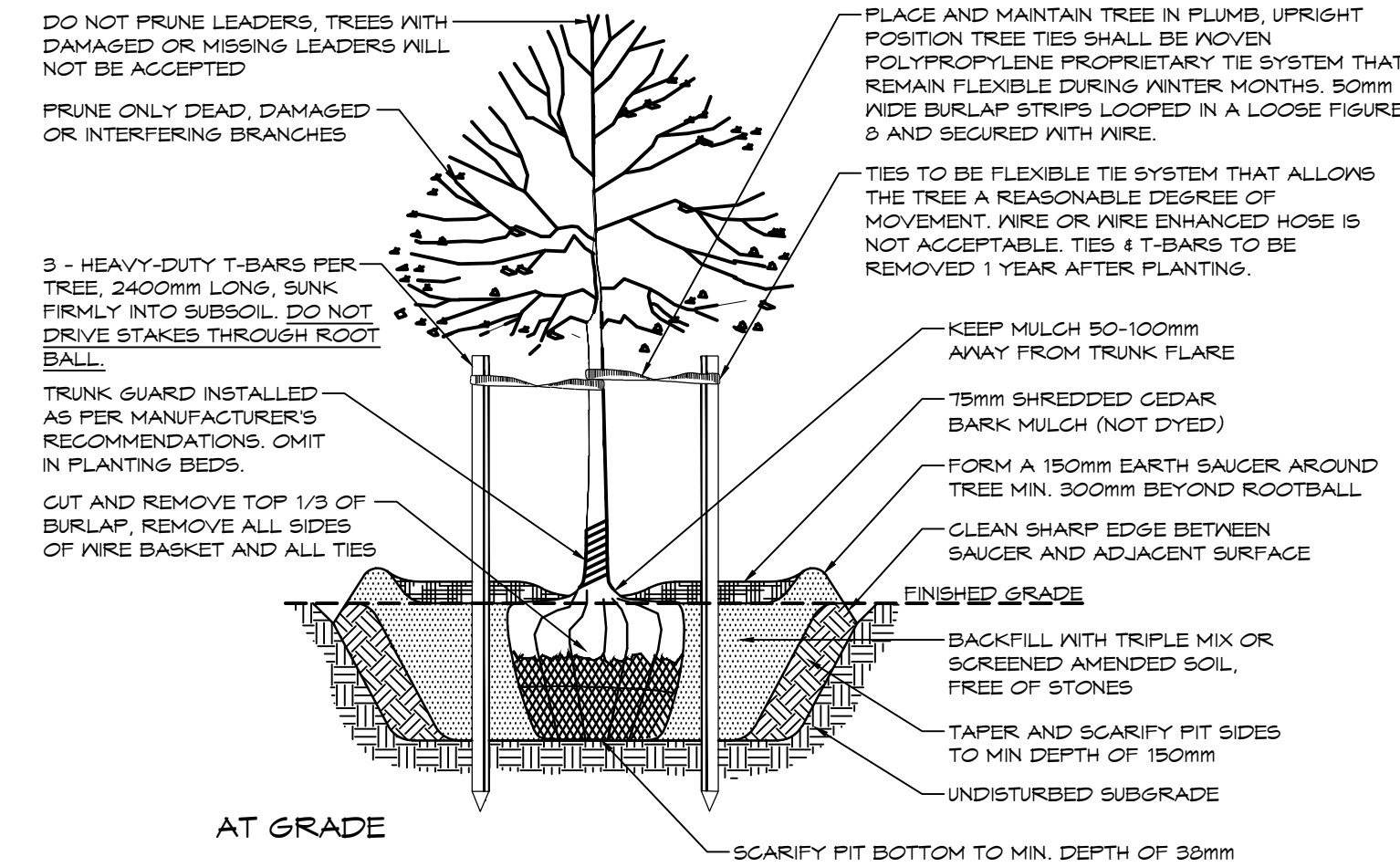


ADMIRAL BUILDING  
1 FIRST STREET, SUITE 200  
COLLINGWOOD, ON L9Y 1A1  
705 446-3510 F  
705 446-3520 F  
WWW.CFCROZIER.CA  
INFO@CFCROZIER.CA

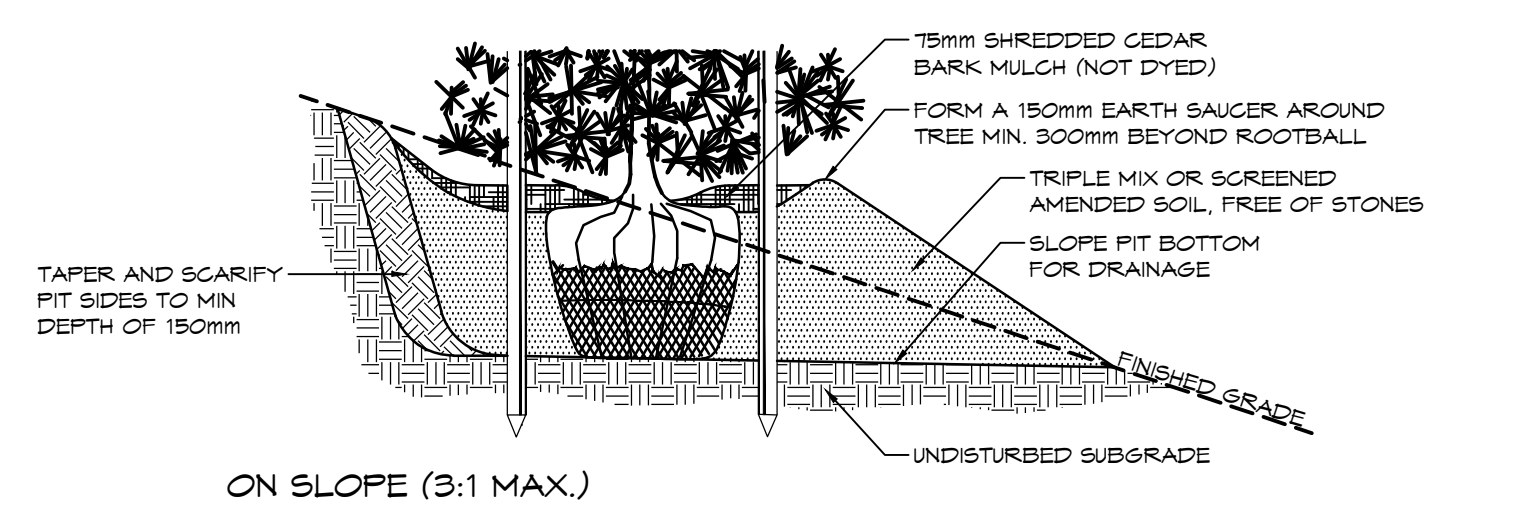
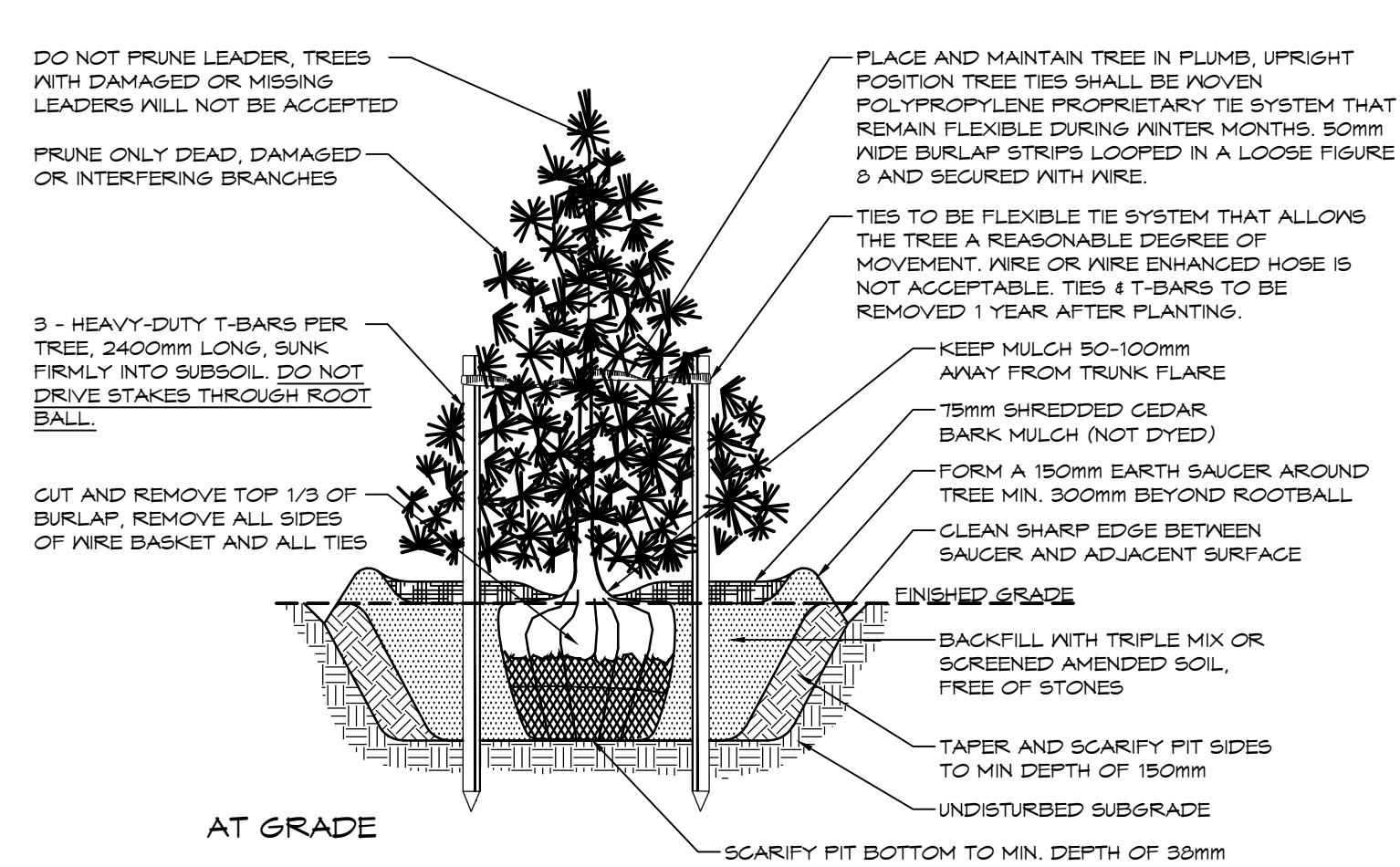
Drawn By A.M. Design By K.M. / A.M. Project 2141-6058

Scale 1:300 Date 2021.11.01 Check By A.P. / K.M. Drawing LP-2

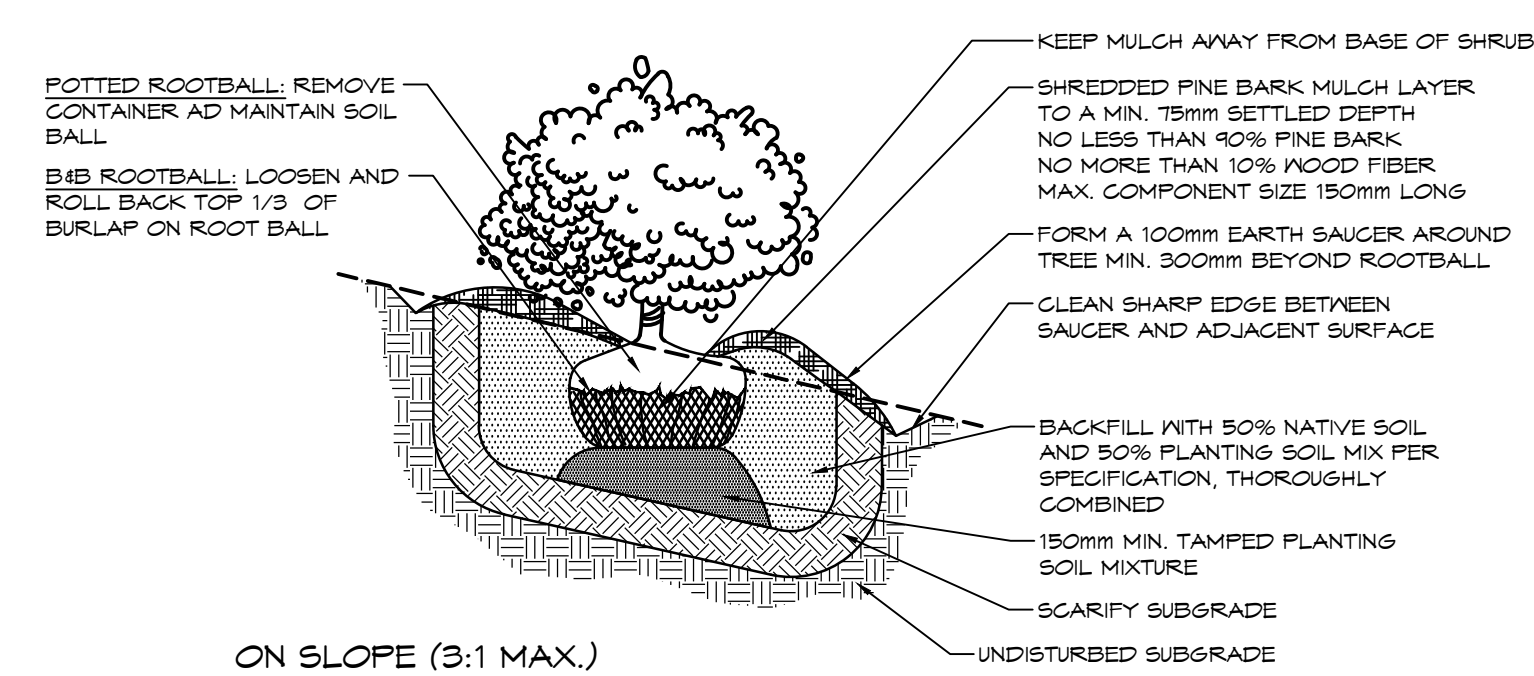
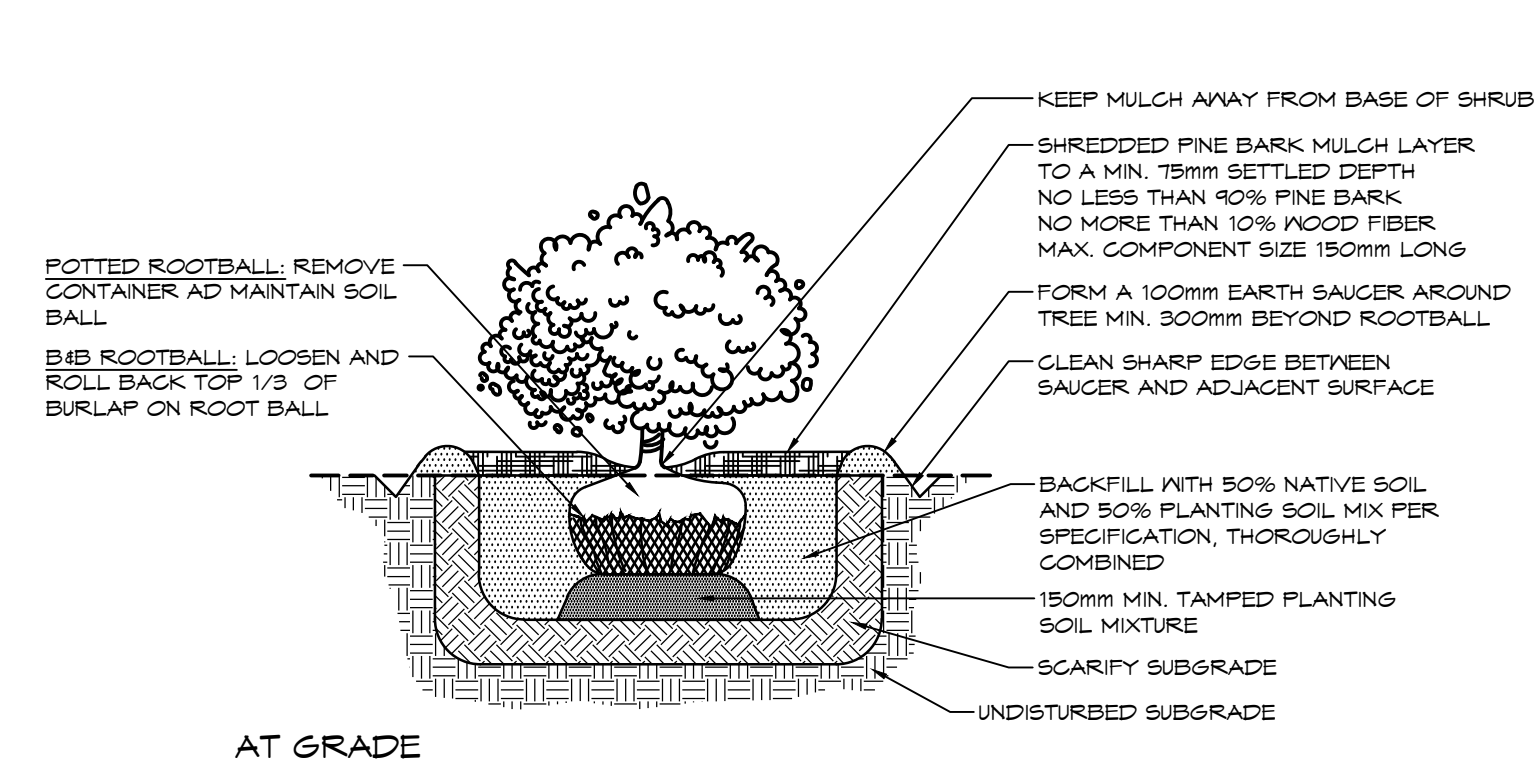




1 LD1 DECIDUOUS TREE PLANTING NTS



2 LD1 CONIFEROUS TREE PLANTING NTS



3 LD1 SHRUB PLANTING NTS

- GENERAL NOTES:**
- 1.0 SITE FURNITURE:
- THE FOLLOWING SITE FURNITURE SHALL BE SUPPLIED BY PARIS EQUIPMENT MANUFACTURING LTD., 254 THIRD CONCESSION ROAD, P.O. BOX 490, PRINCETON, ONTARIO, TEL: 1800.387.6318  
**BICYCLE RACK**  
MODEL NO.: BRH-P (PAINTED)  
METAL FINISH: POWDER COATED GRAPHITE GREY  
FOOTING/ ATTACHMENTS: SECURED TO CONCRETE PAVING WITH SATINLESS STEEL FASTENERS  
**BENCH**  
MODEL NO.: VERVE-6FT-PL  
METAL FINISH: POWDER COATED GRAPHITE GREY  
WOOD: IPE  
FOOTING/ ATTACHMENTS: SECURED TO CONCRETE PAVING WITH SATINLESS STEEL FASTENERS
  - THE FOLLOWING SITE FURNITURE SHALL BE SUPPLIED BY TIMBERKITS TM, 185 GEORGE STREET, LINDSAY, ONTARIO, TEL: 905.242.0500, OR APPROVED EQUAL.  
**PERGOLA**  
MODEL NO.: SUPER HEAVY STANDARD PERGOLA  
BUILD SIZE: 14 X 14
- 2.0 PLANTING
- ALL WORKMANSHIP TO THE STANDARDS OF THE LANDSCAPE ONTARIO HORTICULTURAL TRADES ASSOCIATION AND THE CANADIAN LANDSCAPE STANDARDS.
  - TREE LOCATIONS SHALL BE STAKED ON SITE BY THE LANDSCAPE CONTRACTOR AND APPROVED BY THE LANDSCAPE ARCHITECT PRIOR TO PLANTING.
  - BACKFILL IS TO CONSIST OF SOIL NATIVE TO THE SITE OR GENERAL SOIL TYPE/GLASS NATIVE TO THE SITE. SOIL AMENDMENT MAY BE REQUIRED BASED ON SOURCE OF IMPORTED OR EXISTING SITE QUALITY OF TOPSOIL. PROVIDE NUTRIENT ANALYSIS OF TOPSOIL TO BE USED FOR LANDSCAPE PURPOSES IN ORDER TO DETERMINE SOIL AMENDMENT REQUIREMENTS.
  - REPORT ALL DISCREPANCIES IN WRITING TO THE LANDSCAPE ARCHITECT.
  - CONTRACTOR SHALL MAINTAIN ALL LANDSCAPE AREAS UNTIL OWNER'S ACCEPTANCE OF PROJECT.
  - UNLESS OTHERWISE STATED, ALL WORK SHALL CONFORM TO THE LANDSCAPE ONTARIO SPECIFICATION STANDARDS.
  - CONTRACTOR TO LOCATE ALL UNDERGROUND UTILITIES.
  - PLANTING MAY BE ADJUSTED TO SUIT LOCATIONS OF SITE UTILITY STRUCTURES/ SERVICES AND DRIVEWAYS.
  - TREE PITS OR PLANTING BEDS LOCATED WITHIN 1 METER OF UNDERGROUND UTILITIES ARE TO BE HAND DUG.
  - SUBMIT WRITTEN GUARANTEE TO THE EFFECT THAT ALL PLANTS ACCEPTED DURING THE PERIOD OF JANUARY 1st TO JULY 15th SHALL BE GUARANTEED UNTIL JULY 15th THE SECOND FOLLOWING YEAR. PLANTS ACCEPTED DURING THE PERIOD OF JULY 15th TO DECEMBER 31st SHALL BE GUARANTEED FOR TWO YEARS FROM THE DATE OF ACCEPTANCE. THE GUARANTEE PERIOD LISTED ABOVE SHALL APPLY TO ALL 'NURSERY GROWN' PLANTS AS PER TOWN OF COLLINGWOOD'S TWO YEAR MAINTENANCE REQUIREMENTS.
  - ALL MATERIAL SHALL BE APPROVED BY THE LANDSCAPE ARCHITECT PRIOR TO INSTALLATION.
  - SOD ANY AREAS MARKED WITH NURSERY SOD ON 150mm CLEAN TOPSOIL. FINE GRADE AND SOD ALL BOULEVARD AREAS TO MUNICIPAL SPECIFICATIONS AND REPAIR DAMAGE TO ADJACENT PROPERTIES AS REQUIRED.
  - FINAL INSPECTION AND ACCEPTANCE OF PLANTING WORK SHALL COINCIDE WITH THE FINAL INSPECTION AND ACCEPTANCE OF ALL WORK INCLUDED IN THE CONTRACT.
  - AT THE TIME OF FINAL INSPECTION, ALL PLANTS SHALL BE IN A HEALTHY, VIGOROUS GROWING CONDITION AND PLANTED IN FULL ACCORDANCE WITH DRAWINGS AND CONDITIONS.

1. THIS DRAWING IS THE EXCLUSIVE PROPERTY OF C.F. CROZIER & ASSOCIATES INC. AND THE REPRODUCTION OF ANY PART WITHOUT PRIOR WRITTEN CONSENT OF THIS OFFICE IS STRICTLY PROHIBITED.

2. THE CONTRACTOR SHALL VERIFY ALL DIMENSIONS, LEVELS, AND DATUMS ON SITE AND REPORT ANY DISCREPANCIES OR OMISSIONS TO THIS OFFICE PRIOR TO CONSTRUCTION.

3. THIS DRAWING IS TO BE READ AND UNDERSTOOD IN CONJUNCTION WITH ALL OTHER PLANS AND DOCUMENTS APPLICABLE TO THIS PROJECT.

4. DO NOT SCALE THE DRAWINGS.

5. ALL EXISTING UNDERGROUND UTILITIES TO BE VERIFIED IN THE FIELD BY THE CONTRACTOR PRIOR TO CONSTRUCTION.

**NOTES:**

1. ALL DIMENSIONS ARE IN MILLIMETERS UNLESS OTHERWISE NOTED.

No.	ISSUE / REVISION	DATE: YYYY.MM.DD
1.	ISSUED FOR 1st SUBMISSION	2021.12.10
2.	ISSUED FOR 2ND SUBMISSION	2022.03.24

No.	ISSUE / REVISION	DATE: YYYY.MM.DD
1.	ISSUED FOR 1st SUBMISSION	2021.12.10
2.	ISSUED FOR 2ND SUBMISSION	2022.03.24



LANDSCAPE ARCHITECT

Project: 1144 FIRST AVENUE WEST  
CITY OF OWEN SOUND

Drawing: LANDSCAPE DETAILS

ADAMANT BUILDING  
1 FIRST STREET, SUITE 200  
COLLINGWOOD, ON L9Y 1A1  
705 446-3510 F  
WWW.CFCROZIER.CA  
INFO@CFCROZIER.CA

Drawn By	A.M.	Design By	K.J.N. / A.M.	Project	2141-6058	
Scale	AS SHOWN	Date	2021.11.01	Check By	A.P. / K.J.N.	
					Drawing	LD-1