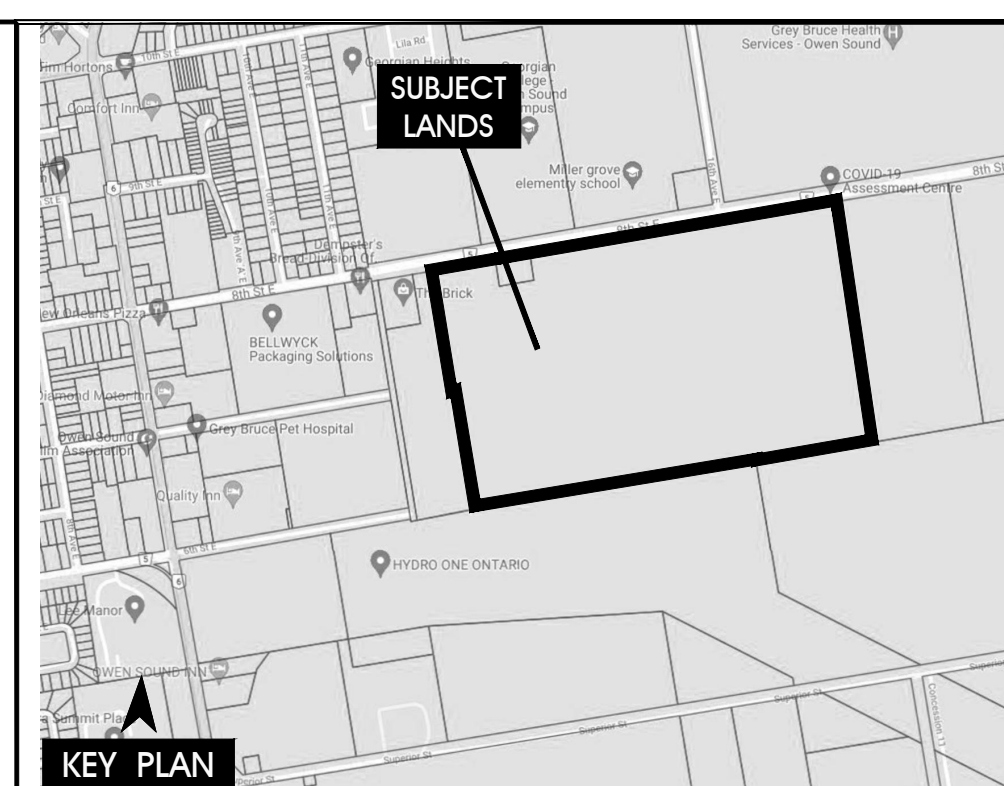


GEORGIAN COLLEGE

MILLER GROVE ELEMENTARY SCHOOL

REGIONAL HOSPITAL



KEY PLAN City of Owen Sound

8th Street Owen Sound 20p651 30dp June 13, 2022

AREA TABLE	Lots/Blocks	Area (ha)
Residential Singles	Lots 1-119	4,408
On-Street Townhouses	Blocks 120-135	1,838
Rear Lane Townhouses	Blocks 136-147	1,267
Back-to-Back Townhouses	Blocks 148-177	3,491
Medium Density Residential Apartments	Blocks 178-179	1,556
Walkway	Block 180	0,027
Utility Easement	Blocks 181-185	0,456
Arterial Commercial	Blocks 186-188	1,991
Park	Block 191	0,869
S/W/M Pond Facility	Block 192	1,849
Environmental Lands	Block 192	0,765
Realigned Channel	Blocks 193-194	1,769
Landscape Strip	Block 195	0,022
Overland Flow	Block 196	0,027
0.3m Reserve Block	Blocks 197-199	0,019
<b>TOTAL</b>		<b>29,600 ha±</b>

ROADS	Width	Length
25.0m R.O.W.	1068 m	2,683
20.0m R.O.W.	751 m	1,516
18.0m R.O.W.	2737 m	5,007
<b>TOTAL</b>	<b>4556 m</b>	<b>9,206 ha±</b>

UNITS	A	B
14.m (46') Single	6	
13.5m (39') Single		41
10.5m (34') Single		72
6.0m On Street Townhouse		86
6.0m Rear Lane Townhouse		62
6.75m Back to Back St. Townhouse		289
Medium Density Residential Apartments		160
<b>TOTAL</b>	<b>716 units</b>	

\* Estimated Unit Yield. Final yield to be determined through Site Plan process.

**SURVEYOR'S CERTIFICATE**

I certify that: the boundaries of the lands to be subdivided and their relationship to the adjacent lands are correctly shown.

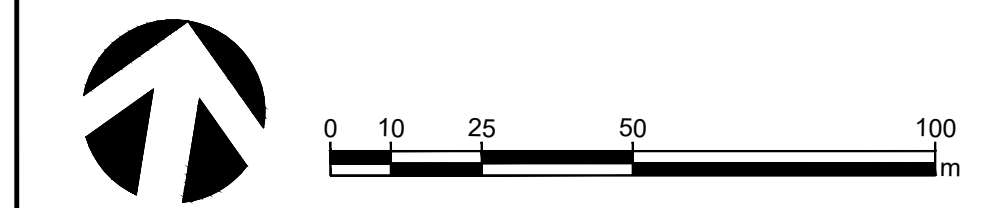
PLEASE SEE ORIGINAL Signature Day Month Year 06 07 2021

Dan Dzaldov, OLS  
Schaeffer Dzaldov Bennett Ltd.  
Tel: 416 987 0101

**OWNER'S AUTHORIZATION**

I/we, **FLATO OWEN SOUND COMMUNITY INC.**, being the registered owner(s) of the subject lands hereby authorize **BOUSFIELDS INC.** to prepare and submit a draft plan of subdivision for approval.

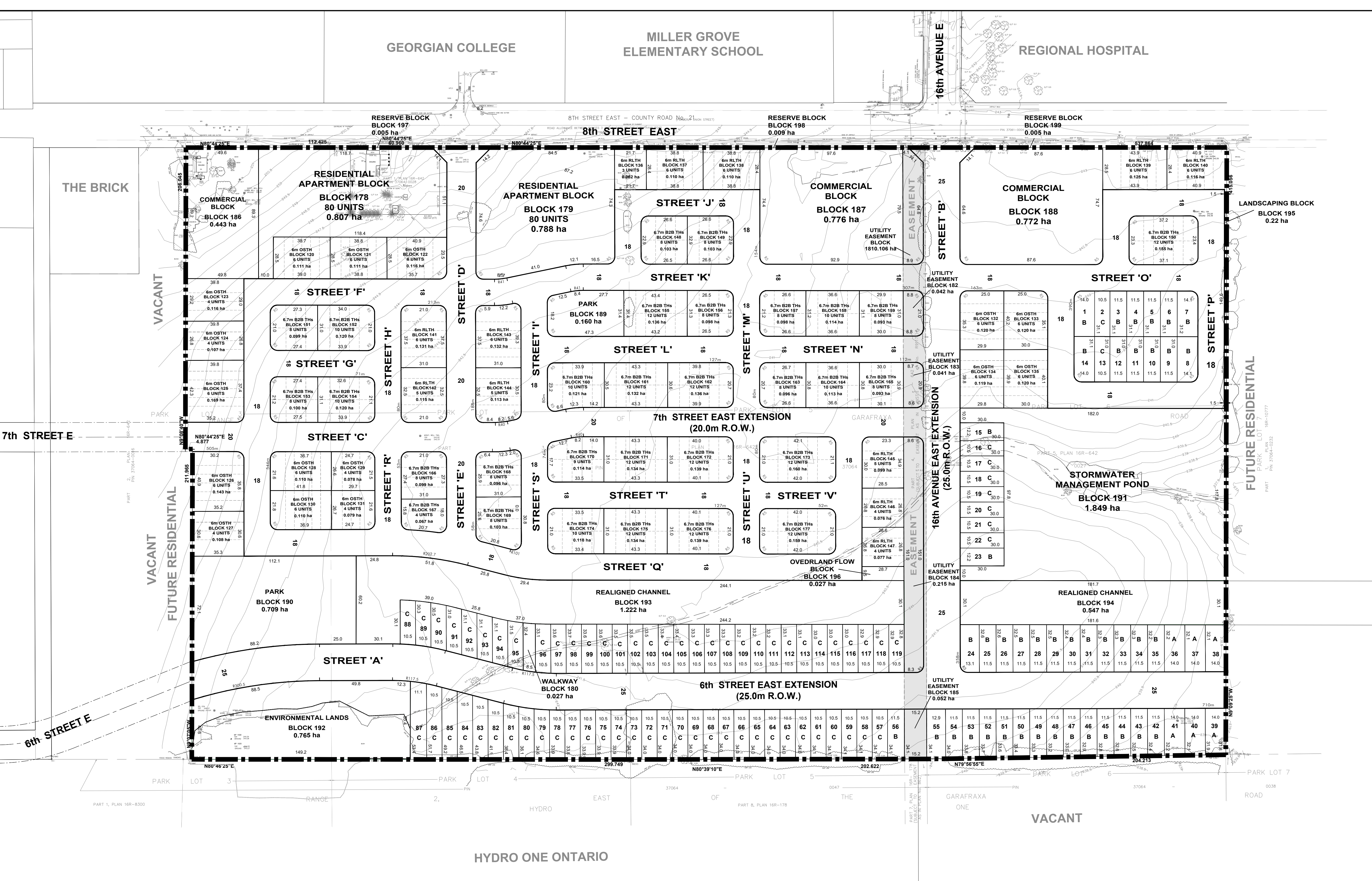
PLEASE SEE ORIGINAL Signature Day Month Year 15 07 2021



**REVISED DRAFT PLAN OF PROPOSED SUBDIVISION PART OF PARK LOTS 3, 4, 5 AND 6 RANGE 3, EAST OF THE GARAFRAXA ROAD (GEOGRAPHIC TOWNSHIP OF SYDENHAM) CITY OF OWEN SOUND COUNTY OF GREY**

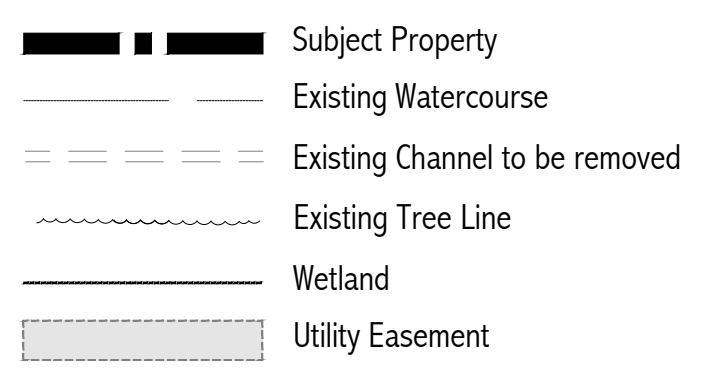
**8th Street East, City of Owen Sound**

**BOUSFIELDS INC.**  
3 Church Street, Suite 200  
Toronto, Ontario M5E 1M2  
P (416) 947-9744  
F (416) 947-0781  
W www.bousfields.ca



**NOTES**

- All dimensions are in metres.
- All area measurements are computer generated.
- All elevations refer to Geodetic Datum.
- Topographic survey information provided by Schaeffer Dzaldov Bennett Ltd. Tel: 416 987 0101



**ADDITIONAL INFORMATION REQUIRED UNDER SECTION 51(17) OF THE PLANNING ACT**

- A, B, C, E, F, G & J shown on draft plan and key plan
- D. Residential singles, OSTH, RLTH, back to back townhouses, residential apartment blocks, arterial commercials, walkway, parks, overland flow, realigned channel, stormwater management pond, utility easements, hazard lands, reserve blocks, landscaping and roads.
- H. Piped municipal water to be provided.
- I. Clay loam soil.
- K. Municipal sanitary & storm sewers to be provided.
- L. As shown.