

SITE PLAN INFORMATION TAKEN FROM SITE PLAN PREPARED BY SCOLER & LEE ASSOCIATES ARCHITECTS INC. DRAWINGS A1, DATED FEB. 2011, REV 12, DATED OCT. 2, 2013 AND FROM PLAN OF SURVEY OF PART OF PARK LOTS 8 AND 9 RANGE 5, EAST OF THE GARAFRAXA ROAD GEOGRAPHIC TOWNSHIP OF SYDENHAM CITY OF OWEN SOUND COUNTY OF GREY BY HEWETT & MILNE LIMITED

SITE PLAN

SITE AREA	7.6 Ha	18.78 AC
COVERAGE	23.2%	
BUILDING GFA	SM	SF
BLDG A1	1,772.40	19,078
BLDG A2	1,913.30	20,595
BLDG B	2,000.50	21,533
BLDG C	780.30	8,400
BLDG D	789.70	8,500
BLDG E	1,858.10	20,000
BLDG F	796.30	8,571
BLDG G	4,403.60	47,400
BLDG H1	418.00	4,500
BLDG H2	105.00	1,125
BLDG H3	130.00	1,400
BLDG H4	200.00	2,150
BLDG I1	246.00	2,650
BLDG I2	116.12	1,250
BLDG K1	3251.61	35,000
BLDG K2	1309.28	14,093

TOTAL GFA 20,090.21 216,245
ZONING AS PER BYLAW 2010-076 (SEE ZONING ANALYSIS)

PARKING (2.65m x 6m W/ 6m drive aisle)

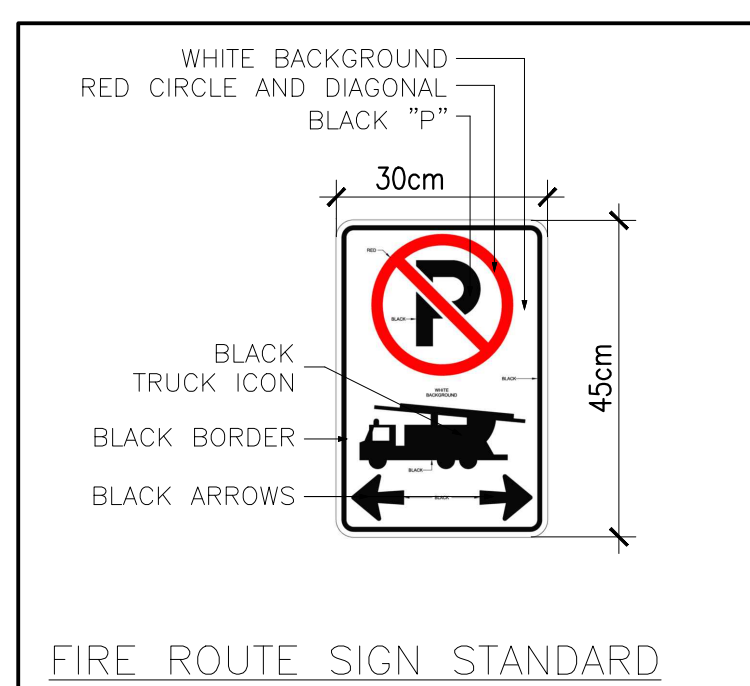
REQUIRED	
1/15 sm gfa up to 300 sm	20 spaces
1/20 sm gfa thereafter	970 spaces
TOTAL	990 spaces

PROVIDED
 (18 BF spaces)
 1003 spaces
 (47 BF spaces)

NOTES:
 CONC. BARRIERS CURB AT THE EDGE OF ALL HARD SURFACES IS REQ'D INCL. ADJACENT TO ALL NATURALIZED AREAS

FIRE VEHICLE ACCESS ROUTE SIGNS SHALL BE INSTALLED TO MEET THE REQUIREMENTS OF THE CITY OF OWEN SOUND FIRE ROUTE BYLAW.

INSTALL TACTILE SURFACE WALKING INDICATOR PLATES IN THE INTERSECTIONS BETWEEN THE CONCRETE SIDEWALK AND THE DESIGNATED CROSS WALK



PLAN LEGEND		FIRE ROUTE	
CSW	CONCRETE SIDEWALK		SINGLE LIGHTPOLE
TW	TACTILE WALKING SURFACE INDICATOR		DOUBLE LIGHTPOLE
DC	DESIGNATED CROSSWALK		PYLON
	FIRE HYDRANT AND VALVE		LANDSCAPE AREA
	DIRECTION OF TRAFFIC FLOW		TYPE A ACCESSIBLE PARKING STALL TYPE "A"
	BENCH		TYP. ACCESSIBLE PARKING STALL TYPE "B"
	FIRE ROUTE SIGNS		



1 NORTH ELEVATION
 SP1.0 3/22 = 1'-0"

IT IS THE RESPONSIBILITY OF THE CONTRACTOR TO:
 - CHECK AND VERIFY ALL DIMENSIONS ON SITE.
 - REPORT ALL ERRORS AND/OR OMISSIONS TO CONSULTANTS PRIOR TO COMMENCING ANY WORK.
 THESE DRAWINGS MAY NOT BE USED FOR CONSTRUCTION UNLESS NOTED OTHERWISE.
 THESE DRAWINGS SHALL NOT BE SCALED. ERRORS MADE BY PERSONS SCALING THESE DRAWINGS SHALL NOT BE THE RESPONSIBILITY OF GREYSTONE.
 THESE DRAWINGS SHALL BE READ IN CONJUNCTION WITH ALL OTHER RELATED DOCUMENTS.
 ALL DESIGN DOCUMENTS ARE THE COPYRIGHT PROPERTY OF GREYSTONE. ANY REPRODUCTIONS OF THE DESIGN DOCUMENTS IN PART OR IN WHOLE IS FORBIDDEN WITHOUT WRITTEN APPROVAL BY GREYSTONE.



Greystone

Kitchener 100 Greenway College Blvd, Unit 1118
 Kitchener, Ontario N2P 2N6
 (519) 896-2100 ext. 200
 info@greystone.ca
 www.greystone.ca

3	ISSUED FOR CLIENT REVIEW	2023.03.10
2	ISSUED FOR CLIENT REVIEW	2023.03.06
1	ISSUED FOR CLIENT REVIEW	2023.03.05
REV.	DESCRIPTION	DATE
<input type="checkbox"/>	REVISION	
<input type="checkbox"/>	ISSUED	
<input type="checkbox"/>	APPROVAL	

PROJECT FOR:
HERITAGE GROVE CENTRE INC.

PROJECT: SITE PLAN
 HERITAGE GROVE CENTRE
 2125 16TH ST. E
 OWEN SOUND, ON

DRAWING: SITE PLAN

DRAWN: P.P.	CHECKED: G.P.	JOB NUMBER: 23231
DATE (YYYY/MM/DD): 2023.03.09	SCALE: AS SHOWN	
DRAWING NUMBER: SP1.0	REVISION NUMBER: R1	

FILE: \\wilton\2023\23231 - Owen Sound - SPA Amendment\23231 - Owen Sound - Site Plan - General - 23.03.09.dwg
 2023.03.09 11:30:13 AM

IT IS THE RESPONSIBILITY OF THE CONTRACTOR TO:

- CHECK AND VERIFY ALL DIMENSIONS ON SITE.
- REPORT ALL ERRORS AND/OR OMISSIONS TO GREYSTONE BEFORE CONTINUING WITH ANY WORK.

THESE DRAWINGS SHALL NOT BE USED FOR CONSTRUCTION UNLESS NOTED OTHERWISE.

THESE DRAWINGS SHALL NOT BE SCALED. ERRORS MADE BY PERSONS SCALING THESE DRAWINGS WILL NOT BE THE RESPONSIBILITY OF GREYSTONE ARCHITECTURAL PARTNERS.

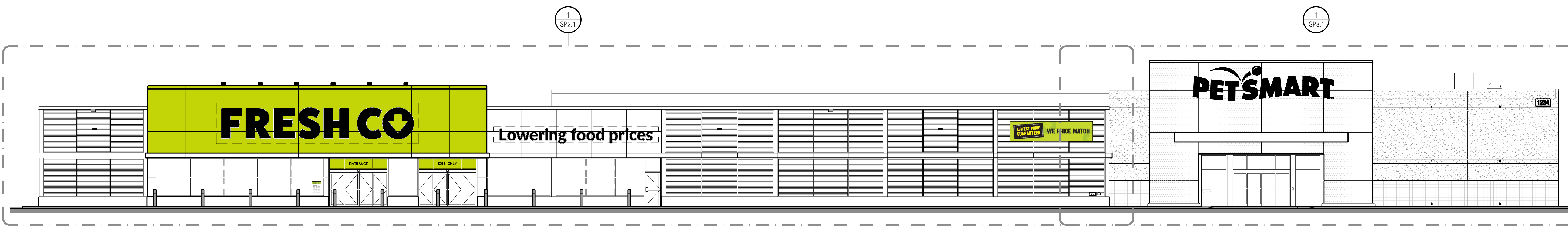
THESE DRAWINGS SHALL TO BE READ IN CONJUNCTION WITH ALL OTHER RELATED DOCUMENTS.

ALL DESIGN DOCUMENTS SHALL THE COPYRIGHT PROPERTY OF GREYSTONE. ANY REPRODUCTIONS OF THE DESIGN DOCUMENTS IN PART OR IN WHOLE IS FORBIDDEN WITHOUT WRITTEN APPROVAL BY GREYSTONE.

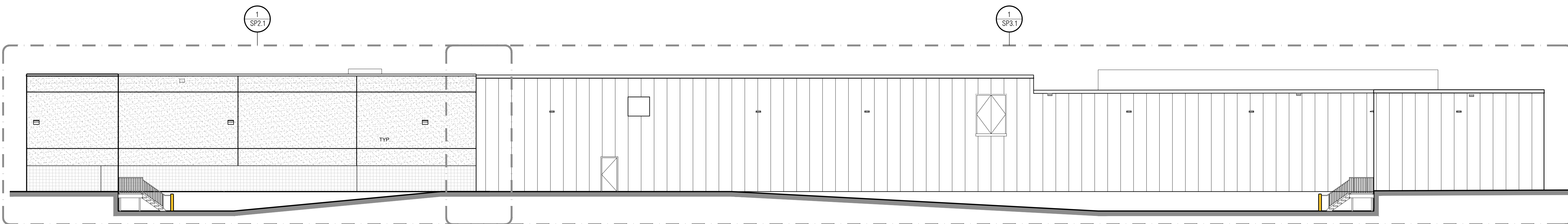


Kitchener
100 Conestoga College Blvd, Unit 1116
Kitchener, Ontario N2P 2N6
(519) 896-1010 ext.100

Toronto
522 Mount Pleasant Rd
Suite 200
Toronto, Ontario M4S 2M3
(416) 440-0058



1 WEST ELEVATION
SP1.1 3/32" = 1'-0"



2 EAST ELEVATION
SP1.1 3/32" = 1'-0"

1	ISSUED FOR CLIENT REVIEW	2023.03.03
REV.	DESCRIPTION	DATE
△ REVISION	□ ISSUED	○ APPROVAL

CLIENT:
HERITAGE GROVE CENTRE INC.

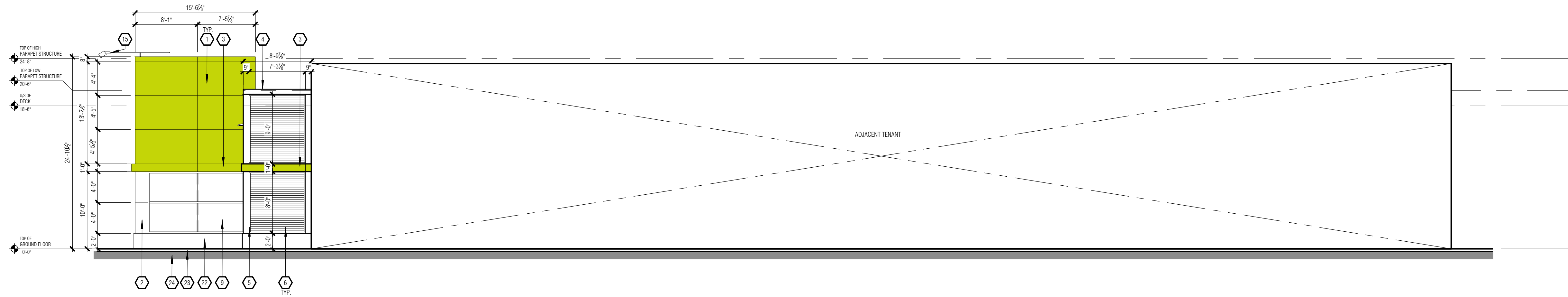
PROJECT:
NEW
HERITAGE GROVE CENTRE
HERITAGE GROVE
2125 16TH ST. E
OWEN SOUND, ON

DRAWING:
EXTERIOR ELEVATIONS KEYPLAN

DRAWN: A.E.	CHECKED: P.P.	JOB NUMBER: 23231
DATE (YYYY/MM/DD): 2023.03.03	SCALE: 1/8" = 1'-0"	
DRAWING NUMBER: SP1.1	REVISION NUMBER: R0	



1 WEST ELEVATION
SP2.1 1/8" = 1'-0"



2 SOUTH ELEVATION
SP2.1 1/8" = 1'-0"

EXTERIOR ELEVATION NOTES

- EXTERIOR SIGNAGE TO BE SUPPLIED AND INSTALLED BY CLIENTS SIGNAGE CONTRACTOR. ALL SIGNAGE IS SHOWN AS APPROXIMATE DIMENSIONS. FINAL SIGN TO BE COORDINATED WITH APPROVED SIGNAGE PACKAGE.
- GENERAL CONTRACTOR TO PROVIDE EXTERIOR GRADE PLYWOOD SHEATHING BEHIND THE EXTERIOR CLADDING WHERE AN EXTERIOR SIGN IS TO BE INSTALLED. PLYWOOD IS TO BE INSTALLED OVER THE EXTERIOR GRADE OYPNUM SHEATHING.
- ALL GRADES ARE TO BE REVIEWED PRIOR TO CONSTRUCTION BY THE GENERAL CONTRACTOR. ALL DISCREPANCIES IN THE GRADES ARE TO BE REPORTED TO GREYSTONE.
- VERTICAL AND HORIZONTAL REVEALS BETWEEN COMPOSITE PANELS TO BE 1/8" IN WIDTH. REVEALS ARE DIMENSIONED TO THE CENTRE LINE. (SEE WALL SECTIONS FOR DETAILING)

EXTERIOR ELEVATION KEYED NOTES

1 ALUMINUM COMPOSITE (ACM) PANELS SPECIFICATION: SYSTEM 3, DRY JOINT MANUFACTURER: VICONET COLOUR: TO MATCH BENJAMIN MOORE 2020-20 "YEW GREEN" (PANTONE MATCH SPEC) ALTERNATIVE: ALPOLIC COLOUR: D45 GREEN *SAMPLES TO BE SUBMITTED FOR APPROVAL.	14 STEEL STAIR LANDING, RAIL AND PICKETS c/w OPEN GRATE TREADS & CHEQUER PLATE NOSINGS. ALL TO BE HOT DIPPED GALVANIZED (SEE STRUCTURAL). GENERAL CONTRACTOR IS TO SUBMIT STAMPED ENGINEERED SHOP DRAWINGS. ROOF PARAPET MOUNTED RETRACTABLE FASCIA LIGHTING FIXTURE (SEE ELECTRICAL, REFLECTED CEILING PLAN AND ROOF PLAN).
2 ALUMINUM COMPOSITE (ACM) PANELS SPECIFICATION: SYSTEM 3, DRY JOINT MANUFACTURER: VICONET COLOUR: 4-BIT-30 'BONE WHITE'	15 EXTERIOR WALL MOUNTED FLOOD LIGHT FIXTURE (SEE ELECTRICAL). PAINTED COLOUR: DARK GREY
3 12" HIGH ALUMINUM COMPOSITE (ACM) PANEL FEATURE BAND PRODUCT: SYSTEM 3, DRY JOINT MANUFACTURER: VICONET COLOUR: TO MATCH BENJAMIN MOORE 2020-20 "YEW GREEN" (PANTONE MATCH SPEC)	16 "STORE HOURS" SIGN (SEE DECOR DRAWINGS)
4 PRE-FINISHED METAL CAP FLASHING COLOUR: VICONET #56161 'CAMBRIDGE WHITE'	17 ALUMINUM "FRESH CO." NON-ILLUMINATED INDIVIDUAL LETTERS BY SIGNAGE CONTRACTOR. COLOUR: BLACK
5 PRE-FINISHED VERTICAL BENT SHEET METAL FEATURE BAND COLOUR: VICONET #56161 'CAMBRIDGE WHITE'	18 ALUMINUM "LOWERING FOOD PRICES" NON-ILLUMINATED INDIVIDUAL LETTERS BY SIGNAGE CONTRACTOR. COLOUR: BLACK
6 PRE-FINISHED METAL SIDING w/ MATCHING TRIM, INSTALLED HORIZONTALLY PROFILE: CORRUGATED COLOUR: VICONET #16082 'REGENT GREY'	19 CONTRACTOR TO PROVIDE EXTERIOR GRADE PLYWOOD BACKING BEHIND SIGNAGE.
7 VERTICAL PRE-FINISHED METAL TRIM PROFILE: VICONET PARTITION MOLDING #521 COLOUR: VICONET #16082 'REGENT GREY'	20 ROOF SCUPPER
8 4" ALL WEATHER INSULATED (ICOLLER) PANEL SYSTEM MANUFACTURER: VICONET INSULATED METAL PANELS PROFILE: MESA DM40 FINISH (EXTERIOR): SMOOTH, PVD PREPAINTED STEEL COLOUR (EXTERIOR): "IMPERIAL WHITE" FINISH (INTERIOR): EMBOSSED, AW100 COMPOSITE POLYESTER RESIN PREPAINTED STEEL COLOUR (INTERIOR): "IMPERIAL WHITE"	21 CONCRETE FOUNDATION WALL (SEE STRUCTURAL). COLOUR: NATURAL CONCRETE COLOUR.
9 CLEAR ANODIZED ALUMINUM FRAMES c/w CLEAR GLAZING (SEE WINDOW SCHEDULE).	22 POURED CONCRETE SIDEWALK
10 CLEAR ANODIZED ALUMINUM BI-PARTING DOOR c/w CLEAR GLAZING (SEE DOOR SCHEDULE).	23 FINISHED GRADE
11 CLEAR ANODIZED ALUMINUM DOOR c/w CLEAR GLAZING (SEE DOOR SCHEDULE).	24 FIRE DEPARTMENT CONNECTION MOUNTED BETWEEN 11 1/2" AND 2'-11 1/2" (300mm AND 900mm) A.F.F. (SEE MECHANICAL)
12 CLEAR ANODIZED ALUMINUM COLUMN COVER.	25 WINDOW FILM TO BE APPLIED TO GLAZING. COLOUR: LIME GREEN 3730-5044
13 HOLLOW METAL DOOR c/w HOLLOW METAL FRAME (SEE DOOR SCHEDULE). COLOUR: TO MATCH VICONET #56161 'CAMBRIDGE WHITE'	26 RECESSED NON-FREEZE HOSE BIB (SEE MECHANICAL).
	27 STEEL BOLLARD c/w CONCRETE FILL (BY LANDLORD) AND PVC COVER w/ REFLECTIVE BANDS (SUPPLIED AND INSTALLED BY THE GENERAL CONTRACTOR). COLOUR: BLACK w/ SILVER BANDS
	28 "WE PRICE MATCH" BANNER. SUPPLIED AND INSTALLED BY SIGNAGE CONTRACTOR.
	29 POURED CONCRETE LOADING RAMP, CURB AND APRON (SEE STRUCTURAL).
	30 STEEL BOLLARD c/w CONCRETE FILL. COLOUR: YELLOW
	31 "ENTRANCE" & "EXIT ONLY" LETTERING BY SIGNAGE CONTRACTOR. COLOUR: BLACK

IT IS THE RESPONSIBILITY OF THE CONTRACTOR TO:

- CHECK AND VERIFY ALL DIMENSIONS ON SITE.
- REPORT ALL ERRORS AND/OR OMISSIONS TO GREYSTONE BEFORE CONTINUING WITH ANY WORK.

THESE DRAWINGS SHALL NOT BE USED FOR CONSTRUCTION UNLESS NOTED OTHERWISE.

THESE DRAWINGS SHALL NOT BE SCALED ERRORS MADE BY PERSONS SCALING THESE DRAWINGS WILL NOT BE THE RESPONSIBILITY OF GREYSTONE ARCHITECTURAL PARTNERS.

THESE DRAWINGS SHALL TO BE READ IN CONJUNCTION WITH ALL OTHER RELATED DOCUMENTS.

ALL DESIGN DOCUMENTS SHALL THE COPYRIGHT PROPERTY OF GREYSTONE. ANY REPRODUCTIONS OF THE DESIGN DOCUMENTS IN PART OR IN WHOLE IS FORBIDDEN WITHOUT WRITTEN APPROVAL BY GREYSTONE.

Greystone

Kitchener
100 Cornerstone College Blvd, Unit 1116
Kitchener, Ontario N2P 2N6
(519) 896-1010 ext.100

Toronto
522 Mount Pleasant Rd
Suite 200
Toronto, Ontario M4S 2M3
(416) 460-9058

1	ISSUED FOR CLIENT REVIEW	2023.03.03
REV.	DESCRIPTION	DATE
△	REVISION	
□	ISSUED	
○	APPROVAL	

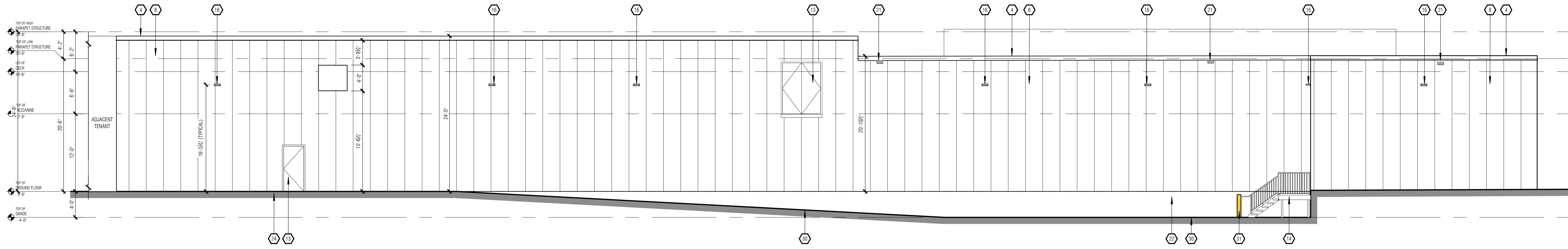
CLIENT:
HERITAGE GROVE CENTRE INC.

PROJECT:
BUILDING K1
FRESH CO

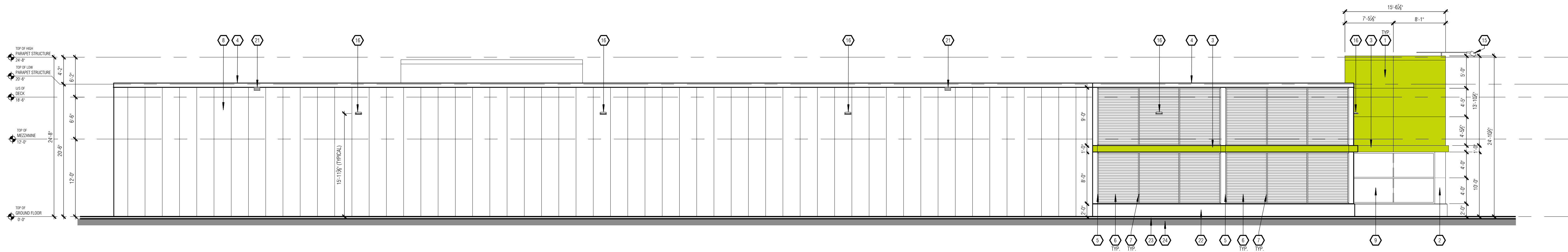
HERITAGE GROVE
2125 16TH ST. E
OWEN SOUND, ON

DRAWING:
EXTERIOR ELEVATIONS

DRAWN: A.E.	CHECKED: P.P.	JOB NUMBER: 23231
DATE (YYYY/MM/DD): 2023.03.03	SCALE: 1/8" = 1'-0"	
DRAWING NUMBER: SP2.1	REVISION NUMBER: R0	



3 EAST ELEVATION
SP2.2 1/8" = 1'-0"



4 NORTH ELEVATION
SP2.2 1/8" = 1'-0"

EXTERIOR ELEVATION NOTES

- EXTERIOR SIGNAGE TO BE SUPPLIED AND INSTALLED BY CLIENTS SIGNAGE CONTRACTOR. ALL SIGNAGE IS SHOWN AS APPROXIMATE DIMENSIONS. FINAL SIGN TO BE COORDINATED WITH APPROVED SIGNAGE PACKAGE.
- GENERAL CONTRACTOR TO PROVIDE EXTERIOR GRADE PLYWOOD SHEATHING BEHIND THE EXTERIOR CLADDING WHERE AN EXTERIOR SIGN IS TO BE INSTALLED. PLYWOOD IS TO BE INSTALLED OVER THE EXTERIOR GRADE GYPSUM SHEATHING.
- ALL GRADES ARE TO BE REVIEWED PRIOR TO CONSTRUCTION BY THE GENERAL CONTRACTOR. ALL DISCREPANCIES IN THE GRADES ARE TO BE REPORTED TO GREYSTONE.
- VERTICAL AND HORIZONTAL REVEALS BETWEEN COMPOSITE PANELS TO BE 1/8" IN WIDTH. REVEALS ARE DIMENSIONED TO THE CENTRE LINE. (SEE WALL SECTIONS FOR DETAILS)

EXTERIOR ELEVATION KEYED NOTES

1 ALUMINUM COMPOSITE (ACM) PANELS SPECIFICATION: SYSTEM 3, DRY JOINT MANUFACTURER: VICWEST COLOUR: TO MATCH BENJAMIN MOORE 2020-20 "EYE GREEN" (PANTONE MATCH SPEC) ALTERNATIVE: ALPOLC COLOUR: "DARK GREEN" *SAMPLES TO BE SUBMITTED FOR APPROVAL.	16 STEEL STAIR LANDING, RAIL AND PICKETS c/w OPEN GRATE TREADS & CHEQUER PLATE NOSINGS. ALL TO BE HOT DIPPED GALVANIZED (SEE STRUCTURAL). GENERAL CONTRACTOR IS TO SUBMIT STAMPED ENGINEERED SHOP DRAWINGS.
2 ALUMINUM COMPOSITE (ACM) PANELS SPECIFICATION: SYSTEM 3, DRY JOINT MANUFACTURER: VICWEST COLOUR: 4-BIT-30 "BONE WHITE"	17 ROOF PARAPET MOUNTED RETRACTABLE FASCIA LIGHTING FIXTURE (SEE ELECTRICAL, REFLECTED CEILING PLAN AND ROOF PLAN). COLOUR: DARK GREY
3 12" HIGH ALUMINUM COMPOSITE (ACM) PANEL FEATURE BAND PRODUCT: SYSTEM 3, DRY JOINT MANUFACTURER: VICWEST COLOUR: TO MATCH BENJAMIN MOORE 2020-20 "EYE GREEN" (PANTONE MATCH SPEC)	18 EXTERIOR WALL MOUNTED FLOODED LIGHT FIXTURE (SEE ELECTRICAL). COLOUR: DARK GREY
4 PRE-FINISHED METAL CAP FLASHING COLOUR: VICWEST #56161 "CAMBRIDGE WHITE"	19 "STORE HOURS" SIGN (SEE DECOR DRAWINGS)
5 PRE-FINISHED VERTICAL BENT SHEET METAL FEATURE BAND COLOUR: VICWEST #56161 "CAMBRIDGE WHITE"	20 ALUMINUM "FRESH CO" NON-ILLUMINATED INDIVIDUAL LETTERS BY SIGNAGE CONTRACTOR. COLOUR: BLACK
6 PRE-FINISHED METAL SIDING w/ MATCHING TRIM, INSTALLED HORIZONTALLY PROFILE: CORRUGATED COLOUR: VICWEST #16082 "REGENT GREY"	21 ALUMINUM "LOWERING FOOD PRICES" NON-ILLUMINATED INDIVIDUAL LETTERS BY SIGNAGE CONTRACTOR. COLOUR: BLACK
7 VERTICAL PRE-FINISHED METAL TRIM PROFILE: VICWEST PARTITION MOLDING #121 COLOUR: VICWEST #16082 "REGENT GREY"	22 CONTRACTOR TO PROVIDE EXTERIOR GRADE PLYWOOD BACKING BEHIND SIGNAGE.
8 4" ALL WEATHER INSULATED (COOLERS) PANEL SYSTEM MANUFACTURER: VICWEST INSULATED METAL PANELS PROFILE: MESA (D&W) FINISH (EXTERIOR): SMOOTH, PVDF PREPARED STEEL COLOUR (EXTERIOR): "IMPERIAL WHITE" FINISH (INTERIOR): EMBOSSED, A/W100 COMPOSITE POLYESTER RESIN PREPARED STEEL COLOUR (INTERIOR): "IMPERIAL WHITE"	23 ROOF SCUPPER
9 CLEAR ANODIZED ALUMINUM FRAMES c/w CLEAR GLAZING (SEE WINDOW SCHEDULE).	24 CONCRETE FOUNDATION WALL (SEE STRUCTURAL). COLOUR: NATURAL CONCRETE COLOUR.
10 CLEAR ANODIZED ALUMINUM BI-PARTING DOOR c/w CLEAR GLAZING (SEE DOOR SCHEDULE).	25 POURED CONCRETE SIDEWALK.
11 CLEAR ANODIZED ALUMINUM DOOR c/w CLEAR GLAZING (SEE DOOR SCHEDULE).	26 FINISHED GRADE.
12 CLEAR ANODIZED ALUMINUM COLUMN COVER.	27 FIRE DEPARTMENT CONNECTION MOUNTED BETWEEN 11 1/2" AND 2-11 1/2" (300mm AND 900mm) A.F.F. (SEE MECHANICAL).
13 HOLLOW METAL DOOR c/w HOLLOW METAL FRAME (SEE DOOR SCHEDULE). COLOUR: TO MATCH VICWEST #56161 "CAMBRIDGE WHITE"	28 WINDOW FILM TO BE APPLIED TO GLAZING. COLOUR: LIME GREEN 3730-5044
	29 RECESSED NON-FREEZE HOSE BIB (SEE MECHANICAL).
	30 STEEL BOLLARD c/w CONCRETE FILL (BY LANDLORD) AND PVC COVER w/ REFLECTIVE BANDS (SUPPLIED AND INSTALLED BY THE GENERAL CONTRACTOR). COLOUR: BLACK w/ SILVER BANDS
	31 "WE PRICE MATCH" BANNER. SUPPLIED AND INSTALLED BY SIGNAGE CONTRACTOR.
	32 POURED CONCRETE LOADING RAMP, CURB AND APRON (SEE STRUCTURAL).
	33 STEEL BOLLARD c/w CONCRETE FILL COLOUR: YELLOW
	34 "ENTRANCE" & "EXIT ONLY" LETTERING BY SIGNAGE CONTRACTOR. COLOUR: BLACK

IT IS THE RESPONSIBILITY OF THE CONTRACTOR TO:

- CHECK AND VERIFY ALL DIMENSIONS ON SITE.
- REPORT ALL ERRORS AND/OR OMISSIONS TO GREYSTONE BEFORE CONTINUING WITH ANY WORK.

THESE DRAWINGS SHALL NOT BE USED FOR CONSTRUCTION UNLESS NOTED OTHERWISE.

THESE DRAWINGS SHALL NOT BE SCALED. ERRORS MADE BY PERSONS SCALING THESE DRAWINGS WILL NOT BE THE RESPONSIBILITY OF GREYSTONE ARCHITECTURAL PARTNERS.

THESE DRAWINGS SHALL TO BE READ IN CONJUNCTION WITH ALL OTHER RELATED DOCUMENTS.

ALL DESIGN DOCUMENTS SHALL THE COPYRIGHT PROPERTY OF GREYSTONE. ANY REPRODUCTIONS OF THE DESIGN DOCUMENTS IN PART OR IN WHOLE IS FORBIDDEN WITHOUT WRITTEN APPROVAL BY GREYSTONE.



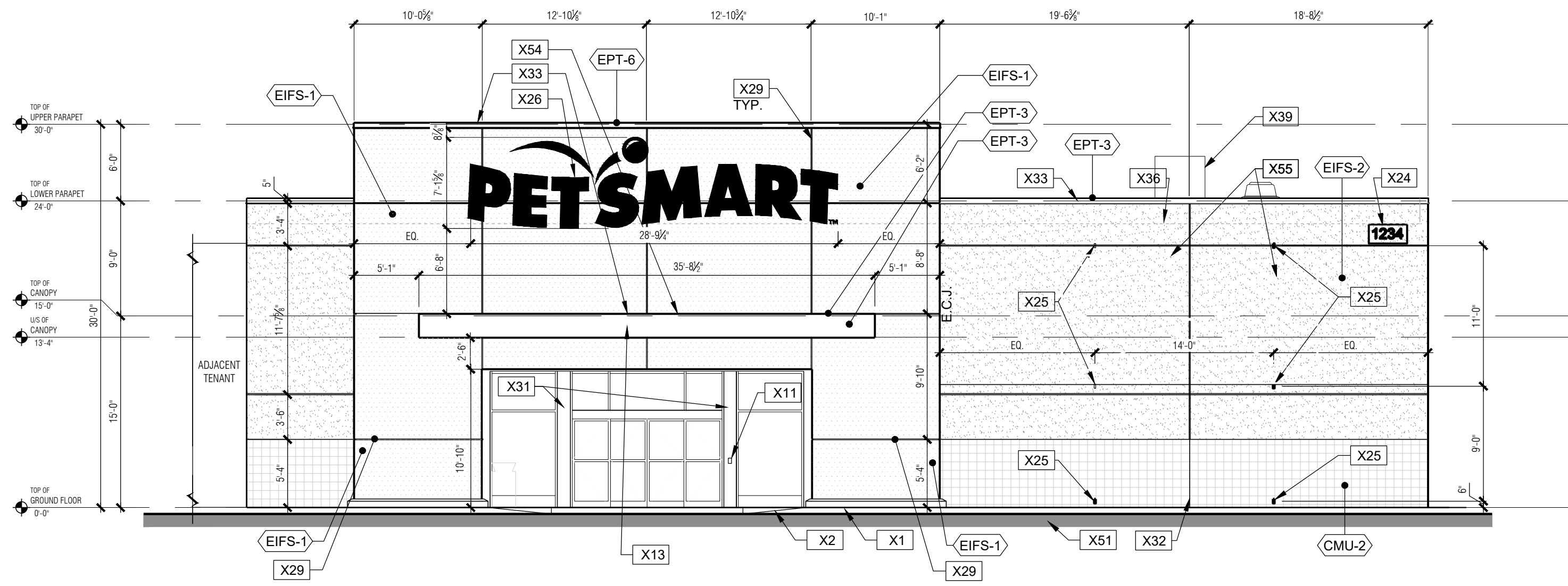
1	ISSUED FOR CLIENT REVIEW	2023.03.03
REV.	DESCRIPTION	DATE
<input type="checkbox"/>	REVISION	
<input type="checkbox"/>	ISSUED	
<input type="checkbox"/>	APPROVAL	

CLIENT:
HERITAGE GROVE CENTRE INC.

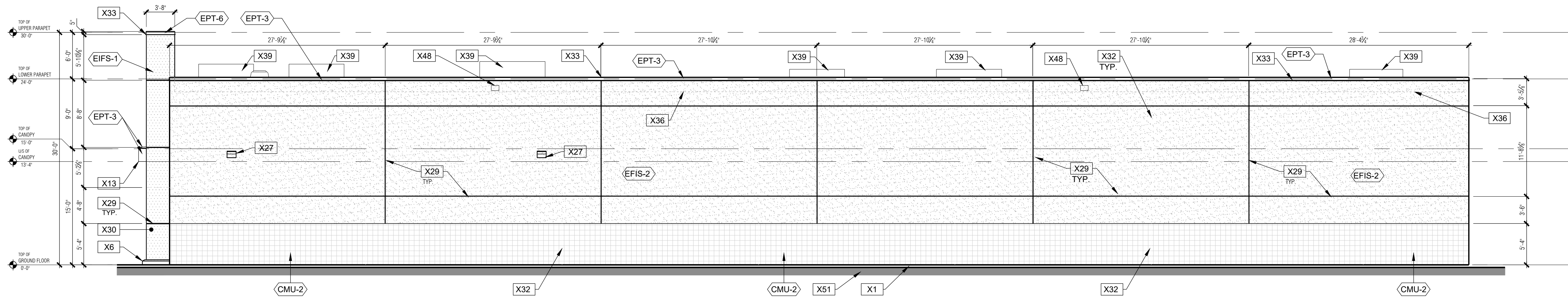
PROJECT:
BUILDING K1
FRESH CO
HERITAGE GROVE
2125 16TH ST. E
OWEN SOUND, ON

DRAWING:
EXTERIOR ELEVATIONS

DRAWN: A.E.	CHECKED: P.P.	JOB NUMBER: 23231
DATE (YYYY/MM/DD): 2023.03.03	SCALE: 1/8" = 1'-0"	
DRAWING NUMBER: SP2.2	REVISION NUMBER: R0	



1 WEST ELEVATION
SP3.1 1/8" = 1'-0"



2 SOUTH ELEVATION
SP3.1 1/8" = 1'-0"

GENERAL NOTES:

- X1. SIDEWALK.
- X2. SIDEWALK CONTROL JOINT - 1/4" MAX. TOOLED JOINT. LOCATE WHERE INDICATED ON PLAN (6" O.C. MAX.).
- X3. SIDEWALK EXPANSION JOINT. LOCATE WHERE INDICATED ON PLAN (20' O.C. MAX.). (SEE STRUCTURAL)
- X4. 1/2" EXPANSION JOINT WITH TRAFFIC SEALANT.
- X5. BARRIER-FREE ACCESSIBLE RAMP, PROVIDE BARRIER-FREE COMPLIANT TACTILE WARNING.
- X6. CONCRETE CURB - SEE WALL SECTION 2/A10.
- X7. FLUSH CONDITION AT DOOR. PROVIDE 2% MAX. SLOPE AWAY FROM DOOR. SEE BARRIER-FREE ACCESSIBILITY NOTES ON SHEET A2.1
- X8. RECESSED OUTLET WITH WATERPROOF COVER @ 60° AFF.
- X9. ASH/TRASH CAN BY G.C. SEE MATERIAL & PRODUCT SCHEDULE.
- X10. EXTERIOR HOSE BIBB AT 28" A.F.G.
- X11. PUSH BUTTON FOR BUZZER RECESSED IN WALL NEAR DOOR JAMB. MOUNTED AT 44" A.F.G. PROVIDE BUZZER WITH COVER PLATE - (SEE ELECTRICAL).
- X12. 6" DIA. CONCRETE FILLED PIPE BOLLARD - SEE DETAIL 8/A12.0.
- X13. CANOPY - PRE-FINISHED STEEL PLATE AWNING / EYEBROW - SEE SHEET A10.0 FOR SECTIONS.
- X14. GAS METER.
- X15. ELECTRIC METER, REFER TO ELECTRICAL DRAWINGS.
- X16. ELECTRICAL TRANSFORMER ON CONCRETE PAD. - **NOT USED** -
- X17. DUMPSTER PAD (SEE STRUCTURAL).
- X18. TRASH CONTAINERS BY OTHERS. VERIFY REQUIRED CLEARANCE WITH LANDLORD/TRASH SERVICE PROVIDER.
- X19. TRUCK DOCK SLAB (SEE STRUCTURAL).
- X20. RETAINING WALL. (SEE STRUCTURAL). EXTEND TO 6" ABOVE FINISHED GRADE.
- X21. 3'-0" HIGH CHAIN LINK FENCE (TOP OF FENCE TO BE 3'-6" ABOVE FINISH GRADE) ON RETAINING WALL. PROVIDE INTERMEDIATE POSTS AT 5'-0" OC. MAXIMUM. CHAIN LINK FENCE TO RUN FULL LENGTH OF RETAINING WALL.
- X22. PROVIDE CONCRETE PAD AT EXIT DOOR. 4'-0" x 7'-0" COORDINATE WITH CIVIL PLANS.
- X23. DOCK BUMPER AND SEAL.
- X24. BUILDING ADDRESS EXAMPLE, REVERSE PAN CHANNEL ON FRONT ELEVATION. MINIMUM 12" HIGH ADDRESS NUMBERS SHALL BE PROVIDED AND INSTALLED BY THE GENERAL CONTRACTOR AT THE FRONT ENTRANCE AND SERVICE ENTRANCE OF THE STORE PER LOCAL REQUIREMENTS. FINAL DETERMINATION ON SIZE, COLOR AND EXACT LOCATION MAY BE ENFORCED BY LOCAL GOVERNMENTAL AUTHORITIES.
- X25. 3/8" GALVANIZED EYEBOLTS FOR (2) BANNERS ATTACHMENT. G.C. TO PURCHASE TEMPORARY BANNERS @ START OF CONSTRUCTION. INSTALL BANNERS AS SOON AS POSSIBLE.
- X26. SIGNAGE PACKAGE UNDER SEPARATE CONTRACT BY PETSMART G.C. TO COORDINATE LOCATION OF ALL REQUIRED POWER AND J-BOXES, EXACT SIZE AND CONFIGURATION BY SIGNAGE CONTRACTOR, FINAL CONNECTION TO SIGN BY G.C.
- X27. LIGHT FIXTURE - SEE ELECTRICAL DRAWINGS.
- X28. EMERGENCY LIGHT - SEE ELECTRICAL DRAWINGS. - **NOT USED** -
- X29. 1" WIDE X 1/2" DEEP E.I.F.S. "V" GROOVE
- X30. PROVIDE HIGH IMPACT MESH @ E.I.F.S. FOR HEIGHT INDICATED AROUND ENTRY.
- X31. ALUMINUM BREAK METAL OVER STEEL TUBE FRAMING AT STOREFRONT. COLOR TO MATCH SF-1
- X32. MASONRY CONTROL JOINT - SEE DETAIL 9/A12.0.
- X33. PAINT DRIP GALVANIZED METAL COPING - SEE ELEVATIONS FOR COLOR.
- X34. FRY VENT SV-75-V-300/EIFS. PAINT TO MATCH SOFFIT.
- X35. NATURAL GAS PIPING ON ROOF. REFER TO DETAIL 2/A5.0 FOR SLEEPER SUPPORT AND TO MECHANICAL DRAWINGS.
- X36. ROOF LINE BEYOND.
- X37. SINGLE PLY ROOF MEMBRANE FLASHING AT BACKSIDE OF PARAPET.
- X38. ROOF WALK PAD BY CARLISLE SYNTec. BLACK PRESSURE-SENSITIVE MOULDED WALKWAY.
- X39. ROOFTOP EQUIPMENT BEYOND - SEE MECHANICAL DRAWINGS.
- X40. RTU TO BE LOCATED 10'-0" MIN. FROM ROOF PERIMETER WHERE PARAPET IS LESS THAN 42" ABOVE ROOF. 5'-0" MIN. WHERE PARAPET IS 42" OR GREATER ABOVE ROOF.
- X41. EXHAUST FAN TO BE LOCATED A MINIMUM OF 10'-0" FROM R.T.U. INTAKE AND 10'-0" MIN. FROM ROOF PERIMETER WHERE PARAPET IS LESS THAN 42" ABOVE ROOF. 5'-0" MIN. WHERE PARAPET IS 42" OR GREATER ABOVE ROOF.
- X42. VENT TO BE LOCATED A MINIMUM OF 10'-0" FROM R.T.U. AIR INTAKE AND 5'-0" MIN. FROM ROOF PERIMETER - SEE PLUMBING.
- X43. ROOF CRICKET - SLOPE AT 1/4" PER FOOT MIN.
- X44. ROOF HATCH - SEE DETAILS ON A12.0.
- X45. ROOF HYDRANT - SEE PLUMBING DRAWINGS.
- X46. SIGNAGE TO BE HALO ILLUMINATED CUT LETTERS (BY OTHERS)
- X47. OUTDOOR SENSOR ASSEMBLY. PAINT WHITE - SEE SHEET EM1
- X48. OVERFLOW SCUPPER. SEE DETAILS 10/A5.0 & 8/A11.0.
- X49. ROOF DRAIN. SEE DETAIL 8/A5.0.
- X50. ACCESS BOX FOR MOBILE GENERATOR MOUNT AT 48" AFF - VERIFY EXACT LOCATION WITH ELECTRICAL DRAWINGS - PAINT TO MATCH ADJACENT WALL.
- X51. APPROXIMATE FINISH GRADE - SEE CIVIL DRAWINGS.
- X52. TRENCH DRAIN / HEAVY DUTY GRATE. SEE STRUCTURAL AND DETAIL 13/A13.0.
- X53. FIRE DEPARTMENT CONNECTION. COORDINATE LOCATION WITH LOCAL FIRE MARSHAL.
- X54. BIRD DETERRENT SHOCK TRACK SYSTEM SUPPLIED BY GRAYBAR (SEE MATERIAL & PRODUCT SCHEDULE). INSTALL ALONG FRONT EDGE OF CANOPY PARAPET W/ 110V CHARGER. INSTALL PER MANUFACTURERS RECOMMENDATIONS.
- X55. OUTLINE OF EXTERIOR VINYL GRAPHICS (10' x20'). VERIFY SIZE AND EXACT LOCATION WITH PETSMART P.M.
- X56. STEEL STAIR, LANDING, RAIL AND PICKETS c/w OPEN GRATE TREADS & CHEQUER PLATE NOSING. ALL TO BE HOT DIPPED GALVANIZED.

MATERIAL/FINISH SCHEDULE (EXTERIOR)

MATERIAL	FINISH COAT(S)	COLOR	MATERIAL	FINISH COAT(S)	COLOR												
CMU-1	SMOOTH FACE C.M.U.	2 COATS DULUX WEATHER GUARD EXT. FLAT -1538	SF-1	STOREFRONT ANODIZED FINISH (NO PAINT)	PREFINISHED CLEAR ANODIZED ALUMINUM FRAMING FINISH w/ 1" LOW-E, PPG - SOLARGRAY + SOLARBAN (60) C (CLEAR) OR APPROVED EQUAL. PROVIDE TEMPERED GLASS UP TO HORIZONTAL MULLION, AND HEAT STRENGTHENED ABOVE HORIZONTAL MULLION.												
CMU-2	SINGLE SCORE C.M.U.	2 COATS DULUX WEATHER GUARD EXT. FLAT -1536	SF-2	AUTOMATIC SLIDING ANODIZED FINISH ENTRANCE DOOR (NO PAINT) WITH TRANSOM	PREFINISHED CLEAR ANODIZED ALUMINUM FRAMING FINISH W/ 1" LOW-E, PPG - SOLARGRAY + SOLARBAN (60) C (CLEAR) OR APPROVED EQUAL. PROVIDE TEMPERED GLASS IN SLIDING DOOR AND SIDE LIGHTS, AND HEAT STRENGTHENED AT TRANSOM.												
EIFS-1	E.I.F.S.	2 COATS DULUX WEATHER GUARD EXT. FLAT -1530	<p>MATERIAL/PRIMER SCHEDULE (EXTERIOR)</p> <table border="1"> <thead> <tr> <th>MATERIAL</th> <th>PRIMERS</th> </tr> </thead> <tbody> <tr> <td>EXTERIOR GALVANIZED METAL</td> <td>1 COAT PITT-TECH DIRECT-TO-METAL PRIMER 90-712</td> </tr> <tr> <td>EXTERIOR FERROUS METAL</td> <td>1 COAT PITT-TECH DIRECT-TO-METAL PRIMER 90-712</td> </tr> <tr> <td>EXTERIOR CMU</td> <td>1 COAT SPEEDHIDE ACRYLIC BLOCK FILLER 6-7</td> </tr> <tr> <td>E.I.F.S.</td> <td>1 COAT PPG SEAL GRIP PRIMER SEALER 17-921</td> </tr> <tr> <td>PIPE BOLLARDS</td> <td>1 COAT PITT-TECH DIRECT-TO-METAL PRIMER 90-712</td> </tr> </tbody> </table>			MATERIAL	PRIMERS	EXTERIOR GALVANIZED METAL	1 COAT PITT-TECH DIRECT-TO-METAL PRIMER 90-712	EXTERIOR FERROUS METAL	1 COAT PITT-TECH DIRECT-TO-METAL PRIMER 90-712	EXTERIOR CMU	1 COAT SPEEDHIDE ACRYLIC BLOCK FILLER 6-7	E.I.F.S.	1 COAT PPG SEAL GRIP PRIMER SEALER 17-921	PIPE BOLLARDS	1 COAT PITT-TECH DIRECT-TO-METAL PRIMER 90-712
MATERIAL	PRIMERS																
EXTERIOR GALVANIZED METAL	1 COAT PITT-TECH DIRECT-TO-METAL PRIMER 90-712																
EXTERIOR FERROUS METAL	1 COAT PITT-TECH DIRECT-TO-METAL PRIMER 90-712																
EXTERIOR CMU	1 COAT SPEEDHIDE ACRYLIC BLOCK FILLER 6-7																
E.I.F.S.	1 COAT PPG SEAL GRIP PRIMER SEALER 17-921																
PIPE BOLLARDS	1 COAT PITT-TECH DIRECT-TO-METAL PRIMER 90-712																
EIFS-2	E.I.F.S.	2 COATS DULUX WEATHER GUARD EXT. FLAT -1538															
EPT-1	OVER FLOW SCUPPERS	PAINT DRIP GALVANIZED 2 COATS PITT-TECH DIRECT-TO-METAL SEMI-GLOSS 90-1210															
EPT-2	DOORS & FRAMES	2 COATS PITT-TECH DIRECT-TO-METAL SEMI-GLOSS 90-1210															
EPT-3	COPING / STEEL PLATE	PAINT DRIP GALVANIZED 2 COATS PITT-TECH DIRECT-TO-METAL SEMI-GLOSS 90-1210															
EPT-4	PIPE BOLLARD	2 COATS PITT-TECH DIRECT-TO-METAL SEMI-GLOSS 90-1210															
EPT-5	CHAIN LINK FENCE (NO PAINT)	PREFINISHED GALVANIZED															
EPT-6	COPING	PAINT GRIP GALVANIZED 2 COATS PITT-TECH DIRECT-TO-METAL SEMI-GLOSS 90-1210															

IT IS THE RESPONSIBILITY OF THE CONTRACTOR TO:
 - CHECK AND VERIFY ALL DIMENSIONS ON SITE.
 - REPORT ALL ERRORS AND/OR OMISSIONS TO GREYSTONE BEFORE CONTINUING WITH ANY WORK.
 THESE DRAWINGS SHALL NOT BE USED FOR CONSTRUCTION UNLESS NOTED OTHERWISE
 THESE DRAWINGS SHALL NOT BE SCALED ERRORS MADE BY PERSONS SCALING THESE DRAWINGS WILL NOT BE THE RESPONSIBILITY OF GREYSTONE ARCHITECTURAL PARTNERS
 THESE DRAWINGS SHALL TO BE READ IN CONJUNCTION WITH ALL OTHER RELATED DOCUMENTS.
 ALL DESIGN DOCUMENTS SHALL THE COPYRIGHT PROPERTY OF GREYSTONE. ANY REPRODUCTIONS OF THE DESIGN DOCUMENTS IN PART OR IN WHOLE IS FORBIDDEN WITHOUT WRITTEN APPROVAL BY GREYSTONE.



1	ISSUED FOR CLIENT REVIEW	2023.03.03
REV.	DESCRIPTION	DATE
△	REVISION	
□	ISSUED	
○	APPROVAL	

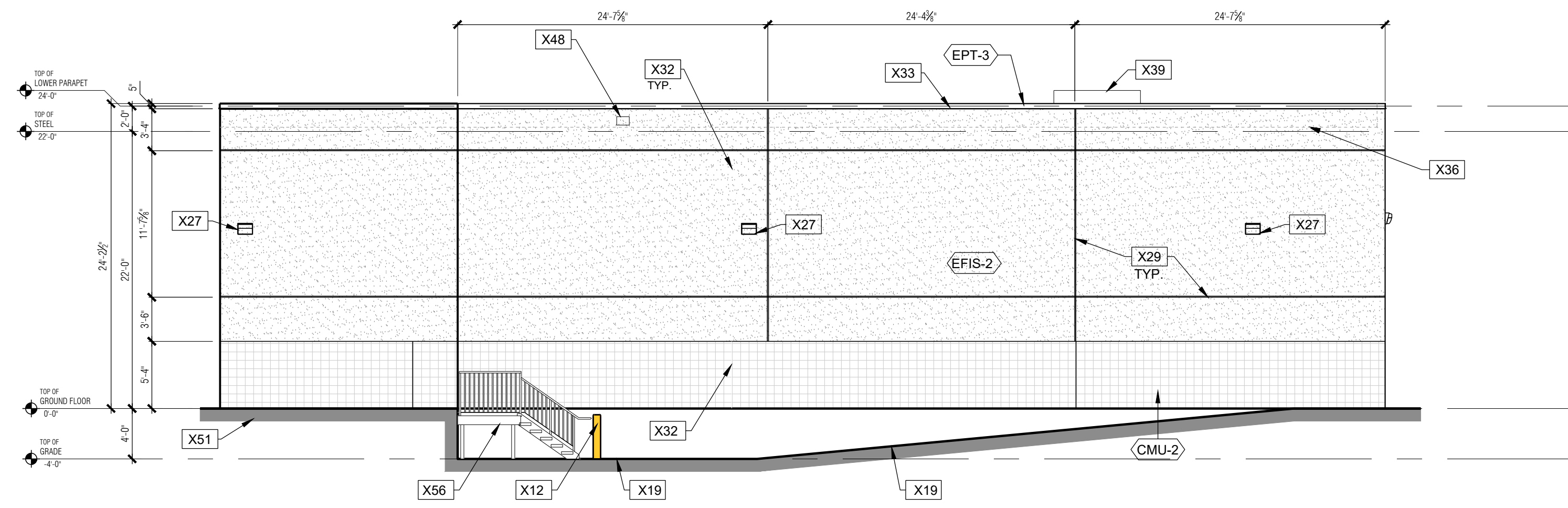
CLIENT:
HERITAGE GROVE CENTRE INC.

PROJECT:
BUILDING K2

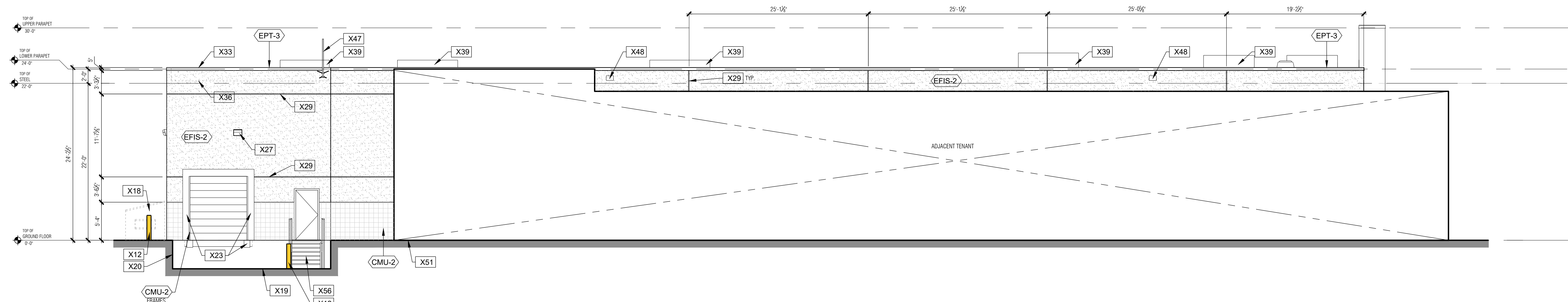
 HERITAGE GROVE CENTRE
 2125 16TH ST. E
 OWEN SOUND, ON

DRAWING:
EXTERIOR ELEVATIONS

DRAWN:	CHECKED:	JOB NUMBER:
A.E.	P.P	23231
DATE (YYYY/MM/DD):	SCALE:	
2023.03.03	1/8" = 1'-0"	
DRAWING NUMBER:	REVISION NUMBER:	
SP3.1	R0	



1 EAST ELEVATION
SP3.2 1/8" = 1'-0"



2 NORTH ELEVATION
SP3.2 1/8" = 1'-0"

GENERAL NOTES:

- X1. SIDEWALK.
- X2. SIDEWALK CONTROL JOINT - 1/4" MAX. TOOLED JOINT. LOCATE WHERE INDICATED ON PLAN (6" O.C. MAX.).
- X3. SIDEWALK EXPANSION JOINT. LOCATE WHERE INDICATED ON PLAN (20' O.C. MAX.). (SEE STRUCTURAL).
- X4. 1/2" EXPANSION JOINT WITH TRAFFIC SEALANT.
- X5. BARRIER-FREE ACCESSIBLE RAMP, PROVIDE BARRIER-FREE COMPLIANT TACTILE WARNING.
- X6. CONCRETE CURB - SEE WALL SECTION 2/A10.
- X7. FLUSH CONDITION AT DOOR. PROVIDE 2% MAX. SLOPE AWAY FROM DOOR. SEE BARRIER-FREE ACCESSIBILITY NOTES ON SHEET A2.1.
- X8. RECESSED OUTLET WITH WATERPROOF COVER @ 60" AFF.
- X9. ASH/TRASH CAN BY G.C. SEE MATERIAL & PRODUCT SCHEDULE.
- X10. EXTERIOR HOSE BIBB AT 28" A.F.G.
- X11. PUSH BUTTON FOR BUZZER RECESSED IN WALL NEAR DOOR JAMB, MOUNTED AT 44" A.F.G. PROVIDE BUZZER WITH COVER PLATE - (SEE ELECTRICAL).
- X12. 6" DIA. CONCRETE FILLED PIPE BOLLARD - SEE DETAIL 8/A12.0.
- X13. CANOPY - PRE-FINISHED STEEL PLATE AWNING / EYEBROW - SEE SHEET A10.0 FOR SECTIONS.
- X14. GAS METER.
- X15. ELECTRIC METER, REFER TO ELECTRICAL DRAWINGS.
- X16. ELECTRICAL TRANSFORMER ON CONCRETE PAD. - **NOT USED** -
- X17. DUMPSTER PAD (SEE STRUCTURAL).
- X18. TRASH CONTAINERS BY OTHERS. VERIFY REQUIRED CLEARANCE WITH LANDLORD/TRASH SERVICE PROVIDER.
- X19. TRUCK DOCK SLAB (SEE STRUCTURAL).
- X20. RETAINING WALL. (SEE STRUCTURAL). EXTEND TO 6" ABOVE FINISHED GRADE.
- X21. 3'-0" HIGH CHAIN LINK FENCE (TOP OF FENCE TO BE 3'-6" ABOVE FINISH GRADE) ON RETAINING WALL. PROVIDE INTERMEDIATE POSTS AT 5'-0" OC. MAXIMUM. CHAIN LINK FENCE TO RUN FULL LENGTH OF RETAINING WALL.
- X22. PROVIDE CONCRETE PAD AT EXIT DOOR. 4'-0" x 7'-0" COORDINATE WITH CIVIL PLANS.
- X23. DOCK BUMPER AND SEAL.
- X24. BUILDING ADDRESS EXAMPLE, REVERSE PAN CHANNEL ON FRONT ELEVATION. MINIMUM 12" HIGH ADDRESS NUMBERS SHALL BE PROVIDED AND INSTALLED BY THE GENERAL CONTRACTOR AT THE FRONT ENTRANCE AND SERVICE ENTRANCE OF THE STORE PER LOCAL REQUIREMENTS. FINAL DETERMINATION ON SIZE, COLOR AND EXACT LOCATION MAY BE ENFORCED BY LOCAL GOVERNMENTAL AUTHORITIES.
- X25. 3/8" GALVANIZED EYEBOLTS FOR (2) BANNERS ATTACHMENT. G.C. TO PURCHASE TEMPORARY BANNERS @ START OF CONSTRUCTION. INSTALL BANNERS AS SOON AS POSSIBLE.
- X26. SIGNAGE PACKAGE UNDER SEPARATE CONTRACT BY PETS-SMART G.C. TO COORDINATE LOCATION OF ALL REQUIRED POWER AND J-BOXES, EXACT SIZE AND CONFIGURATION BY SIGNAGE CONTRACTOR, FINAL CONNECTION TO SIGN BY G.C.
- X27. LIGHT FIXTURE - SEE ELECTRICAL DRAWINGS.
- X28. EMERGENCY LIGHT - SEE ELECTRICAL DRAWINGS. - **NOT USED** -
- X29. 1" WIDE X 1/2" DEEP E.I.F.S. "V" GROOVE
- X30. PROVIDE HIGH IMPACT MESH @ E.I.F.S. FOR HEIGHT INDICATED AROUND ENTRY.
- X31. ALUMINUM BREAK METAL OVER STEEL TUBE FRAMING AT STOREFRONT - COLOR TO MATCH SF-1
- X32. MASONRY CONTROL JOINT - SEE DETAIL 9/A12.0.
- X33. PAINT DRIP GALVANIZED METAL COPING - SEE ELEVATIONS FOR COLOR.
- X34. FRY VENT SV-75-V-300/EIFS. PAINT TO MATCH SOFFIT.
- X35. NATURAL GAS PIPING ON ROOF. REFER TO DETAIL 2/A5.0 FOR SLEEPER SUPPORT AND TO MECHANICAL DRAWINGS.
- X36. ROOF LINE BEYOND.
- X37. SINGLE PLY ROOF MEMBRANE FLASHING AT BACKSIDE OF PARAPET.
- X38. ROOF WALK PAD BY CARLISLE SYNTEC. BLACK PRESSURE-SENSITIVE MOULDED WALKWAY.
- X39. ROOFTOP EQUIPMENT BEYOND - SEE MECHANICAL DRAWINGS.
- X40. RTU TO BE LOCATED 10'-0" MIN. FROM ROOF PERIMETER WHERE PARAPET IS LESS THAN 42" ABOVE ROOF. 5'-0" MIN. WHERE PARAPET IS 42" OR GREATER ABOVE ROOF.
- X41. EXHAUST FAN TO BE LOCATED A MINIMUM OF 10'-0" FROM R.T.U. INTAKE AND 10'-0" MIN. FROM ROOF PERIMETER WHERE PARAPET IS LESS THAN 42" ABOVE ROOF. 5'-0" MIN. WHERE PARAPET IS 42" OR GREATER ABOVE ROOF.
- X42. VENT TO BE LOCATED A MINIMUM OF 10'-0" FROM R.T.U. AIR INTAKE AND 5'-0" MIN. FROM ROOF PERIMETER - SEE PLUMBING.
- X43. ROOF CRICKET - SLOPE AT 1/4" PER FOOT MIN.
- X44. ROOF HATCH - SEE DETAILS ON A12.0.
- X45. ROOF HYDRANT - SEE PLUMBING DRAWINGS.
- X46. SIGNAGE TO BE HALO ILLUMINATED CUT LETTERS (BY OTHERS)
- X47. OUTDOOR SENSOR ASSEMBLY - PAINT WHITE - SEE SHEET EM1
- X48. OVERFLOW SCUPPER. SEE DETAILS 10/A5.0 & 8/A11.0.
- X49. ROOF DRAIN. SEE DETAIL 8/A5.0.
- X50. ACCESS BOX FOR MOBILE GENERATOR MOUNT AT 48" AFF - VERIFY EXACT LOCATION WITH ELECTRICAL DRAWINGS - PAINT TO MATCH ADJACENT WALL.
- X51. APPROXIMATE FINISH GRADE - SEE CIVIL DRAWINGS.
- X52. TRENCH DRAIN / HEAVY DUTY GRATE. SEE STRUCTURAL AND DETAIL 13/A13.0.
- X53. FIRE DEPARTMENT CONNECTION. COORDINATE LOCATION WITH LOCAL FIRE MARSHAL.
- X54. BIRD DETERRENT SHOCK TRACK SYSTEM SUPPLIED BY GRAYBAR (SEE MATERIAL & PRODUCT SCHEDULE). INSTALL ALONG FRONT EDGE OF CANOPY PARAPET W/ 110V CHARGER. INSTALL PER MANUFACTURERS RECOMMENDATIONS.
- X55. OUTLINE OF EXTERIOR VINYL GRAPHICS (10' x20'). VERIFY SIZE AND EXACT LOCATION WITH PETS-SMART P.M.
- X56. STEEL STAIR, LANDING, RAIL AND PICKETS c/w OPEN GRATE TREADS & CHEQUER PLATE NOSING. ALL TO BE HOT DIPPED GALVANIZED.

MATERIAL/FINISH SCHEDULE (EXTERIOR)

MATERIAL	FINISH COAT(S)	COLOR
CMU-1	SMOOTH FACE C.M.U.	2 COATS DULUX WEATHER GUARD EXT. FLAT -1538 PAINT PPG PAINTS #PPG1007-5 "LAZY AFTERNOON"
CMU-2	SINGLE SCORE C.M.U.	2 COATS DULUX WEATHER GUARD EXT. FLAT -1536 PAINT PPG PAINTS #PPG1007-6 "COOL CHARCOAL"
EIFS-1	E.I.F.S.	2 COATS DULUX WEATHER GUARD EXT. FLAT -1530 PAINT PPG PAINTS #PPG1002-2 "ARCTIC COTTON" SAND FINISH
EIFS-2	E.I.F.S.	2 COATS DULUX WEATHER GUARD EXT. FLAT -1538 PAINT PPG PAINTS #PPG1007-5 "LAZY AFTERNOON" SAND FINISH
EPT-1	OVER FLOW SCUPPERS	PAINT DRIP GALVANIZED 2 COATS PITT-TECH DIRECT-TO-METAL SEMI-GLOSS 90-1210 PAINT PPG PAINTS #PPG1007-5 "LAZY AFTERNOON"
EPT-2	DOORS & FRAMES	2 COATS PITT-TECH DIRECT-TO-METAL SEMI-GLOSS 90-1210 PAINT PPG PAINTS #PPG1007-5 "LAZY AFTERNOON"
EPT-3	COPING / STEEL PLATE	PAINT DRIP GALVANIZED 2 COATS PITT-TECH DIRECT-TO-METAL SEMI-GLOSS 90-1210 PAINT PPG PAINTS #PPG1007-5 "LAZY AFTERNOON"
EPT-4	PIPE BOLLARD	2 COATS PITT-TECH DIRECT-TO-METAL SEMI-GLOSS 90-1210 PAINT PPG PAINTS TRAFFIC YELLOW
EPT-5	CHAIN LINK FENCE	PREFINISHED GALVANIZED (NO PAINT) GALVANIZED
EPT-6	COPING	PAINT GRIP GALVANIZED 2 COATS PITT-TECH DIRECT-TO-METAL SEMI-GLOSS 90-1210 PAINT PPG PAINTS #PPG1002-2 "ARCTIC COTTON"

MATERIAL	FINISH COAT(S)	COLOR
SF-1	STOREFRONT	ANODIZED FINISH (NO PAINT) PREFINISHED CLEAR ANODIZED ALUMINUM FRAMING FINISH w/ 1" LOW-E, PPG - SOLARGRAY + SOLARBAN (60) C (CLEAR) OR APPROVED EQUAL. PROVIDE TEMPERED GLASS IN SLIDING DOOR AND SIDE LIGHTS, AND HEAT STRENGTHENED ABOVE HORIZONTAL MULLION.
SF-2	AUTOMATIC SLIDING ENTRANCE DOOR WITH TRANSOM	ANODIZED FINISH (NO PAINT) PREFINISHED CLEAR ANODIZED ALUMINUM FRAMING FINISH w/ 1" LOW-E, PPG - SOLARGRAY + SOLARBAN (60) C (CLEAR) OR APPROVED EQUAL. PROVIDE TEMPERED GLASS IN SLIDING DOOR AND SIDE LIGHTS, AND HEAT STRENGTHENED AT TRANSOM.

MATERIAL/PRIMER SCHEDULE (EXTERIOR)

MATERIAL	PRIMERS
EXTERIOR GALVANIZED METAL	1 COAT PITT-TECH DIRECT-TO-METAL PRIMER 90-712
EXTERIOR FERROUS METAL	1 COAT PITT-TECH DIRECT-TO-METAL PRIMER 90-712
EXTERIOR CMU	1 COAT SPEEDHIDE SEAL GRIP PRIMER SEALER 17-921
E.I.F.S.	1 COAT PPG SEAL GRIP PRIMER SEALER 17-921
PIPE BOLLARDS	1 COAT PITT-TECH DIRECT-TO-METAL PRIMER 90-712

IT IS THE RESPONSIBILITY OF THE CONTRACTOR TO:
 - CHECK AND VERIFY ALL DIMENSIONS ON SITE.
 - REPORT ALL ERRORS AND/OR OMISSIONS TO GREYSTONE BEFORE CONTINUING WITH ANY WORK.
 THESE DRAWINGS SHALL NOT BE USED FOR CONSTRUCTION UNLESS NOTED OTHERWISE
 THESE DRAWINGS SHALL NOT BE SCALED ERRORS MADE BY PERSONS SCALING THESE DRAWINGS WILL NOT BE THE RESPONSIBILITY OF GREYSTONE ARCHITECTURAL PARTNERS
 THESE DRAWINGS SHALL TO BE READ IN CONJUNCTION WITH ALL OTHER RELATED DOCUMENTS.
 ALL DESIGN DOCUMENTS SHALL THE COPYRIGHT PROPERTY OF GREYSTONE. ANY REPRODUCTIONS OF THE DESIGN DOCUMENTS IN PART OR IN WHOLE IS FORBIDDEN WITHOUT WRITTEN APPROVAL BY GREYSTONE.



1	ISSUED FOR CLIENT REVIEW	2023.03.03
REV.	DESCRIPTION	DATE
<input type="checkbox"/>	REVISION	
<input type="checkbox"/>	ISSUED	
<input type="checkbox"/>	APPROVAL	

CLIENT:
HERITAGE GROVE CENTRE INC.

PROJECT:
BUILDING K2
PETS-SMART
 HERITAGE GROVE
 2125 16TH ST. E
 OWEN SOUND, ON

DRAWING:
EXTERIOR ELEVATIONS

DRAWN: A.E.	CHECKED: P.P	JOB NUMBER: 23231
DATE (YYYY/MM/DD): 2023.03.03	SCALE: 1/8" = 1'-0"	
DRAWING NUMBER: SP3.2	REVISION NUMBER: R0	