



# Climate Action Strategy

Operations Committee

July 20, 2023

**owen**  
**sound**  
where you *want* to live

# Priority of Council

## Strategic Plan – Green City – Key Result 5

- Develop a Climate Mitigation Plan as a part of a Climate Action Strategy that incorporates the 2021 Corporate Climate Change Adaptation Plan

## Official Plan – 2.2.1 – Climate Change

- Respond and adapt to the impacts of a changing climate and act on the City's responsibility to provide mitigation and adaptation measures to reduce greenhouse gas emissions and increase resiliency to a changing climate

# 5 Milestone Framework

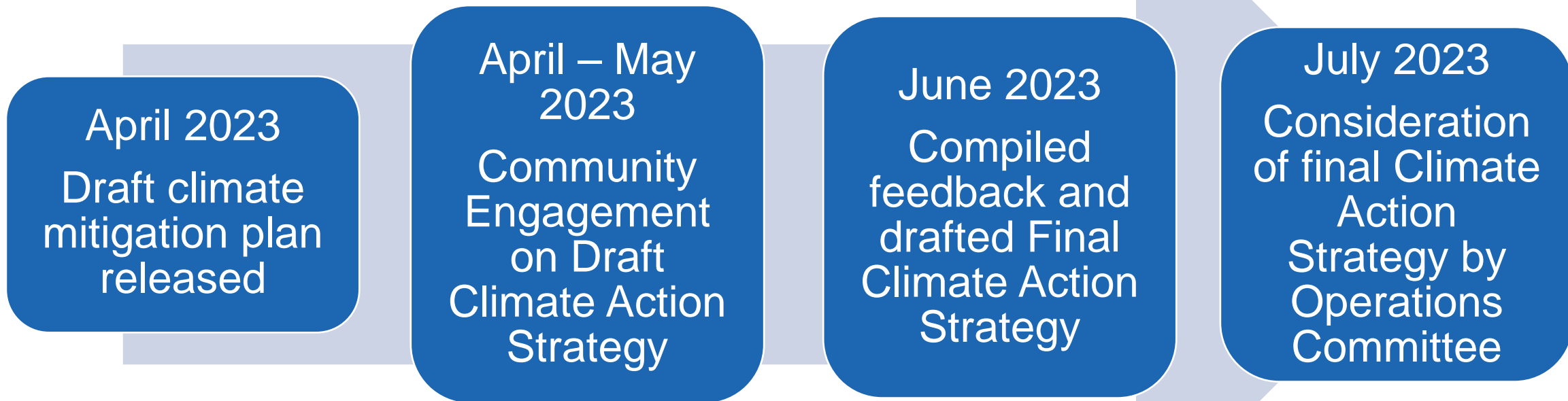


# Timeline





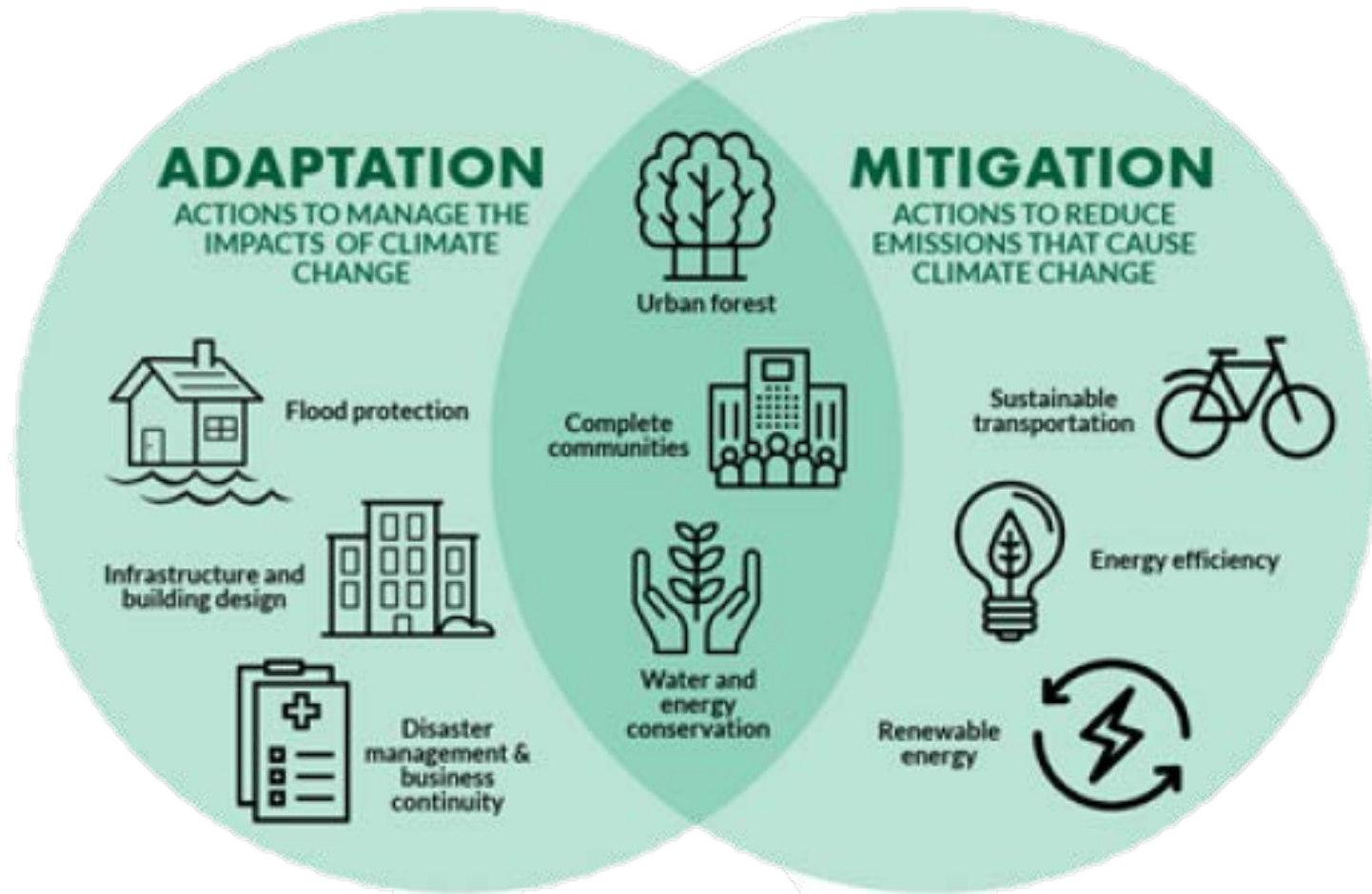
# Timeline (continued)



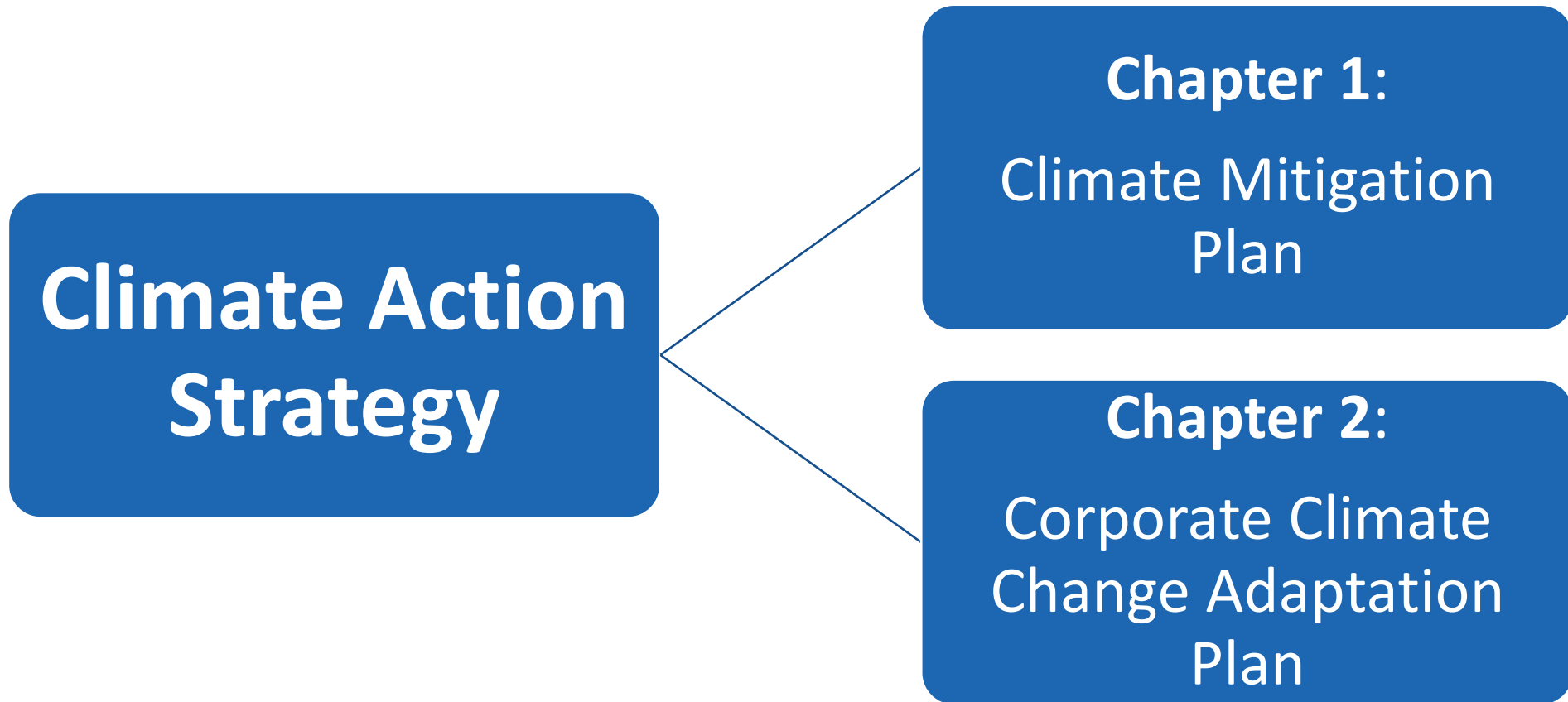
# Corporate and Community Actions



# Adaptation vs. Mitigation



# City's Climate Action Strategy





# Corporate Climate Change Adaptation Plan

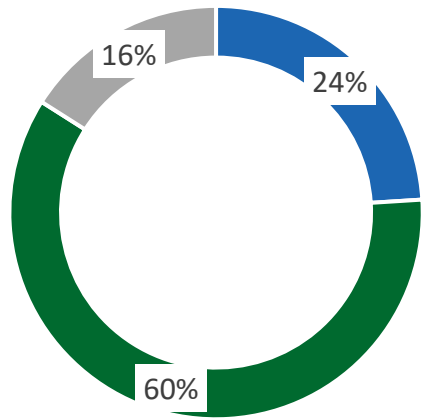


This Photo by Unknown Author is licensed under [CC BY-SA-NC](#)

- Identified climatic threats and impacts to infrastructure and services
- Evaluated impacts for vulnerability and risk
- Identified 25 actions to be taken to increase resiliency

# Corporate Climate Change Adaptation Plan

## Status of Actions within Adaptation Plan



- Proceeding as Anticipated 6 (24%)
- Complete 15 (60%)
- Not yet Started/ On Hold 4 (16%)

## • Key Activities:

- Master Stormwater Plan and Drainage Study approved in capital budget for 2024 and 2025
- Completing the construction of the East Bayshore sewage pumping station a location susceptible to sewage bypass events
- Guidelines for extreme heat and extreme cold events have been developed along with a standardized media release

# Climate Mitigation Plan





# Collaboration

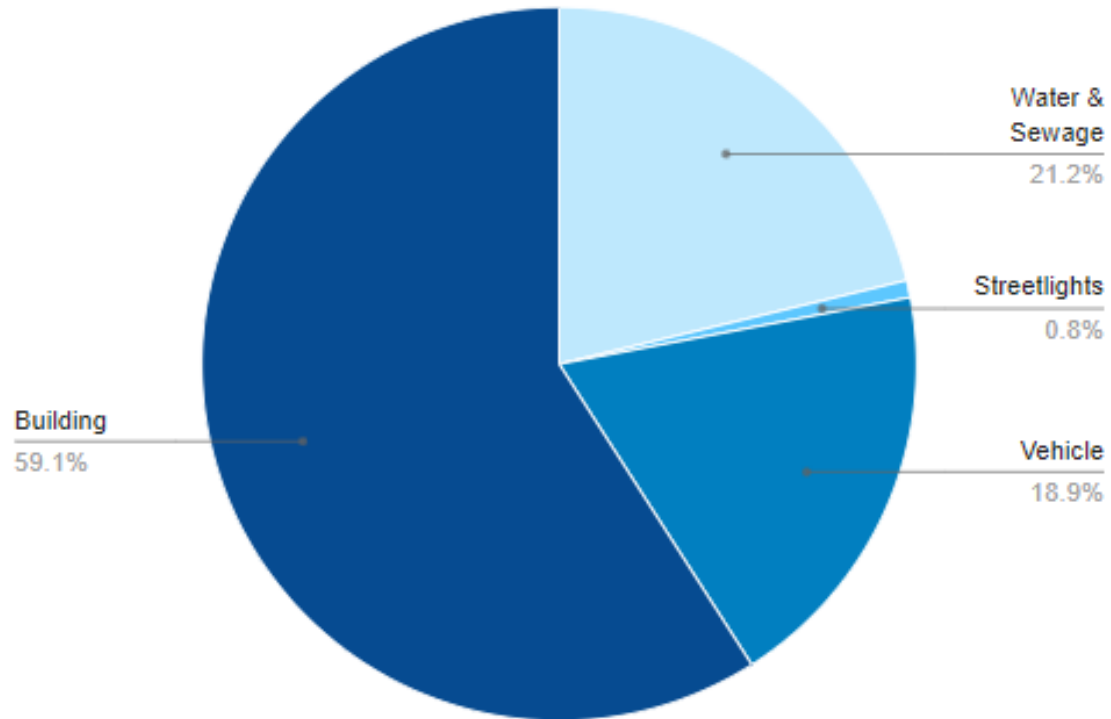
**Local Climate  
Action:**  
*Coordinated  
Community Action*





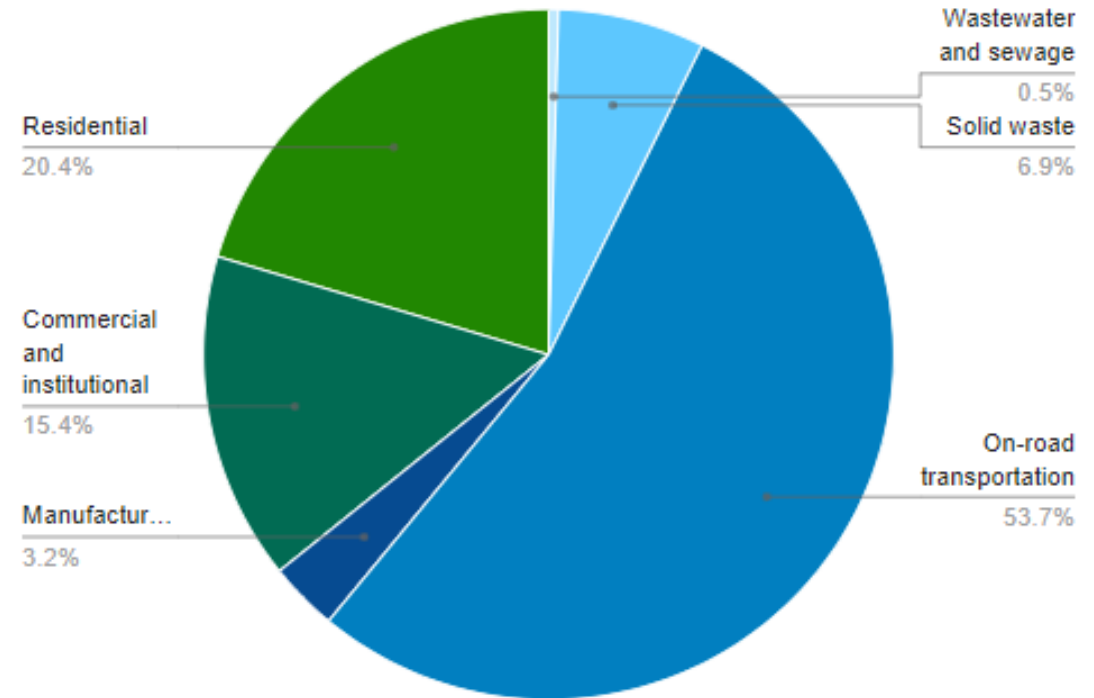
# 2018 Emission Inventories Aligns with Grey County Climate Action Plan

## Corporate GHG Emissions (tCO2e)



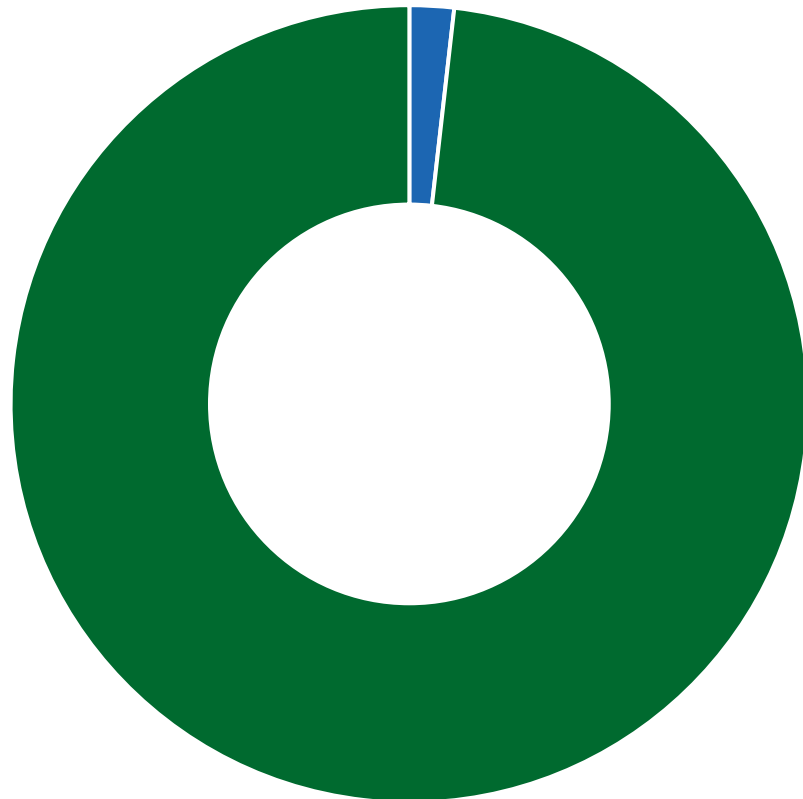
Corporate emissions: 2,699 tCO2e

## Community GHG Emissions (tCO2e)



Community emissions: 147,213 tCO2e

# Total Emissions (Corporate and Community)



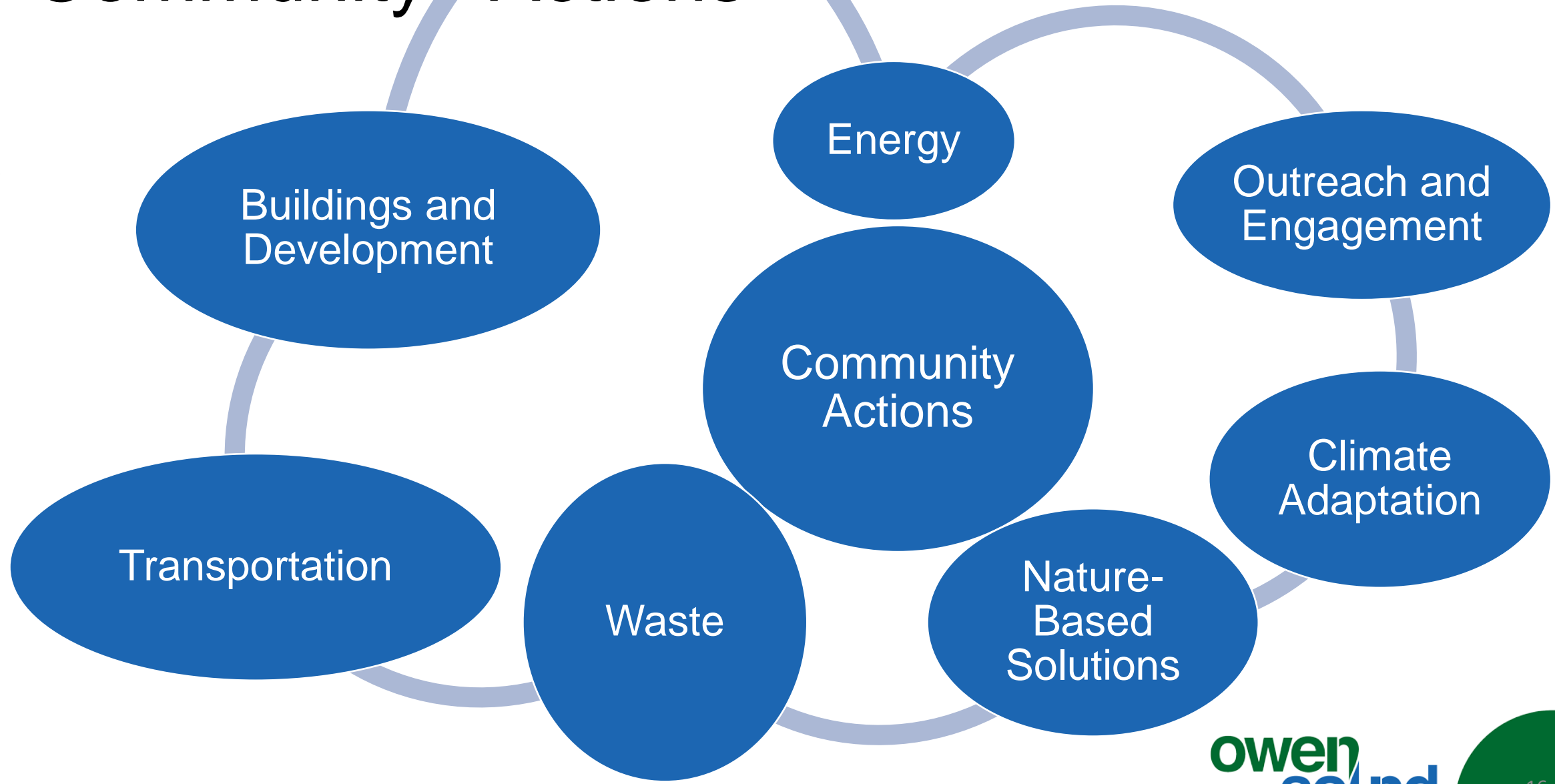
■ Corporate ■ Community

- Total emissions: 149,912 tCO<sub>2</sub>e
- Corporate emissions: ~1.83%
- Community emissions: ~98.2%

# Emissions Reduction Targets

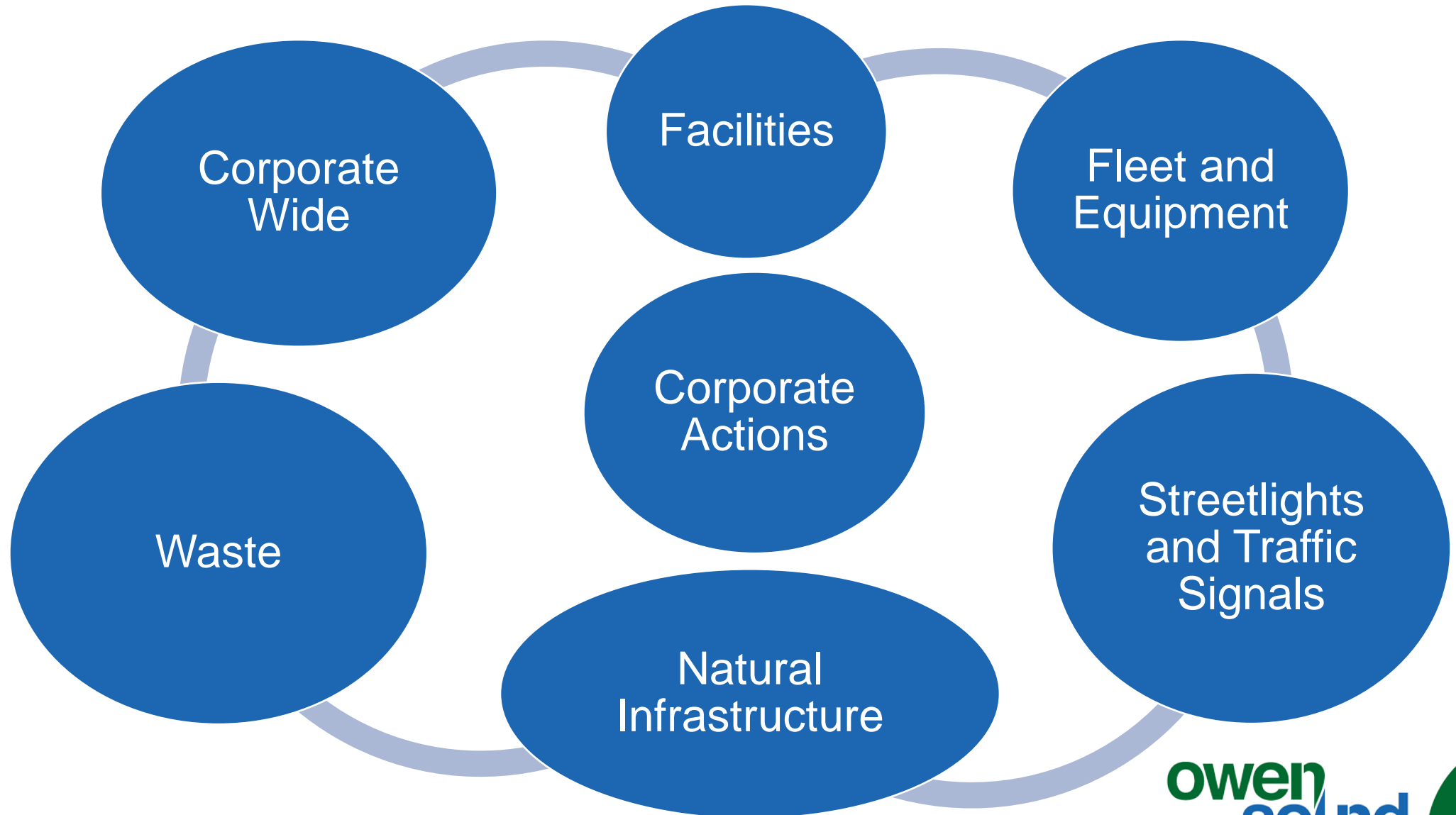
Year	Community Target	Corporate Target
2026	15%	20%
2030	30%	35%
2035	50%	50%
2040	60%	65%
2045	75%	80%
2050	Net-Zero	Net-Zero

# Community Actions





# Corporate Actions



# Moving Forward



# Thank You!

