

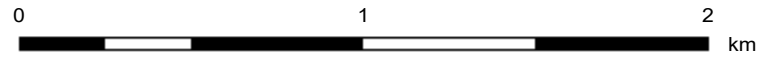
Map data © OpenStreetMap contributors, Microsoft, Facebook, Inc. and its affiliates, Esri Community Maps contributors, Map layer by Esri

Legend

ROADS
Roads

Notes

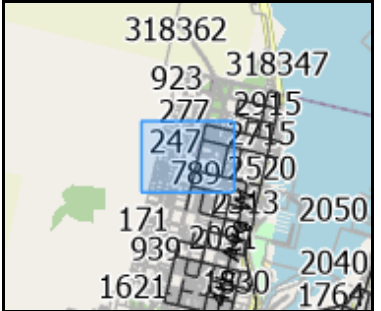
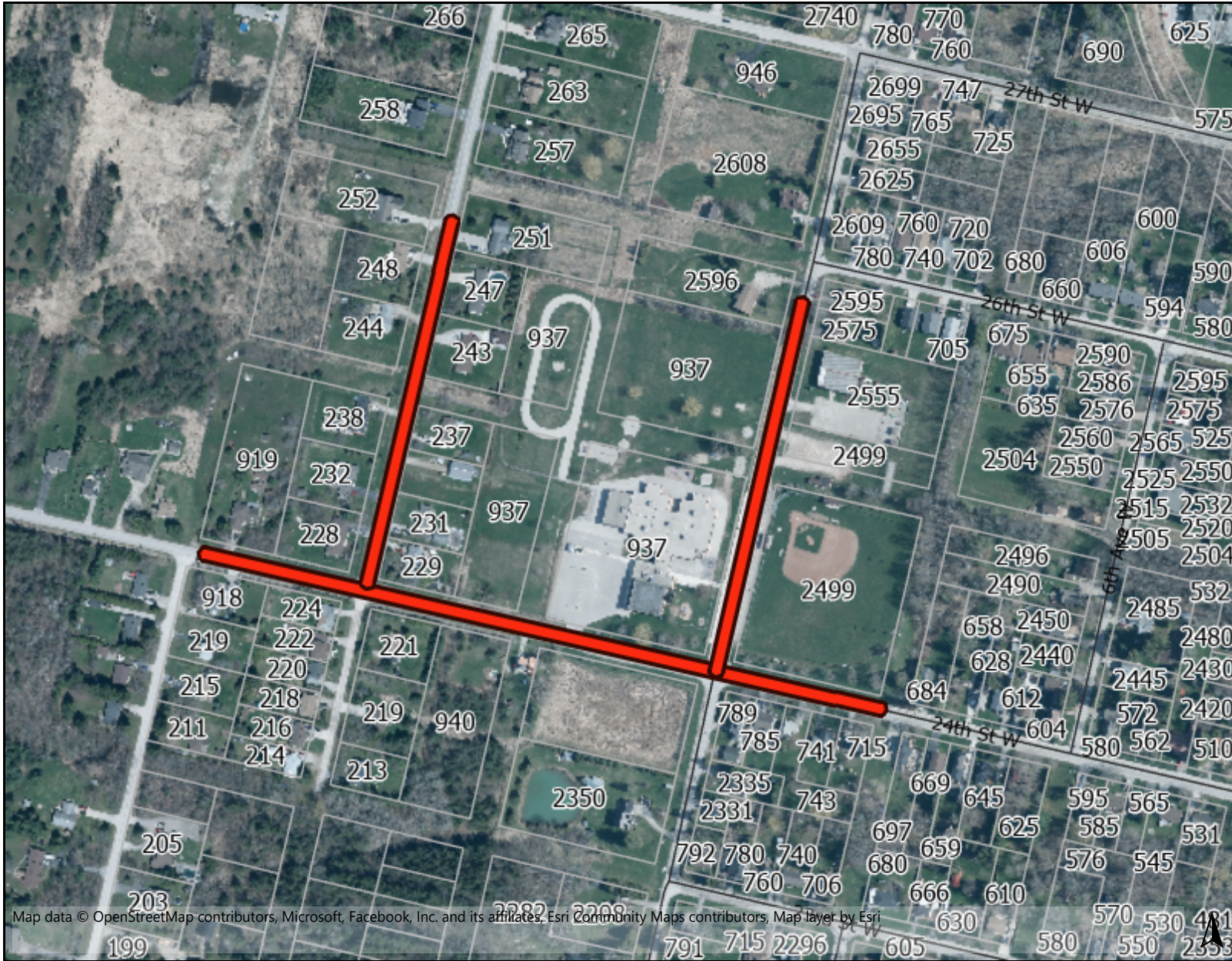
Red = School Zone (30 km/h speed limit), Cyan = School Area (warning but no speed reduction)



This map is a user generated static output from an Internet mapping site and is for reference only. Data layers that appear on this map may or may not be accurate, current, or otherwise reliable.

THIS MAP IS NOT TO BE USED FOR NAVIGATION

Keppel-Sarawak School Zone (30 km/h)



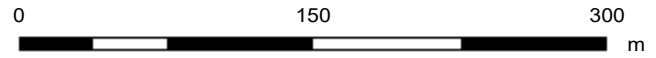
Legend

ROADS
Roads

PROPERTY INFORMATION
Parcels

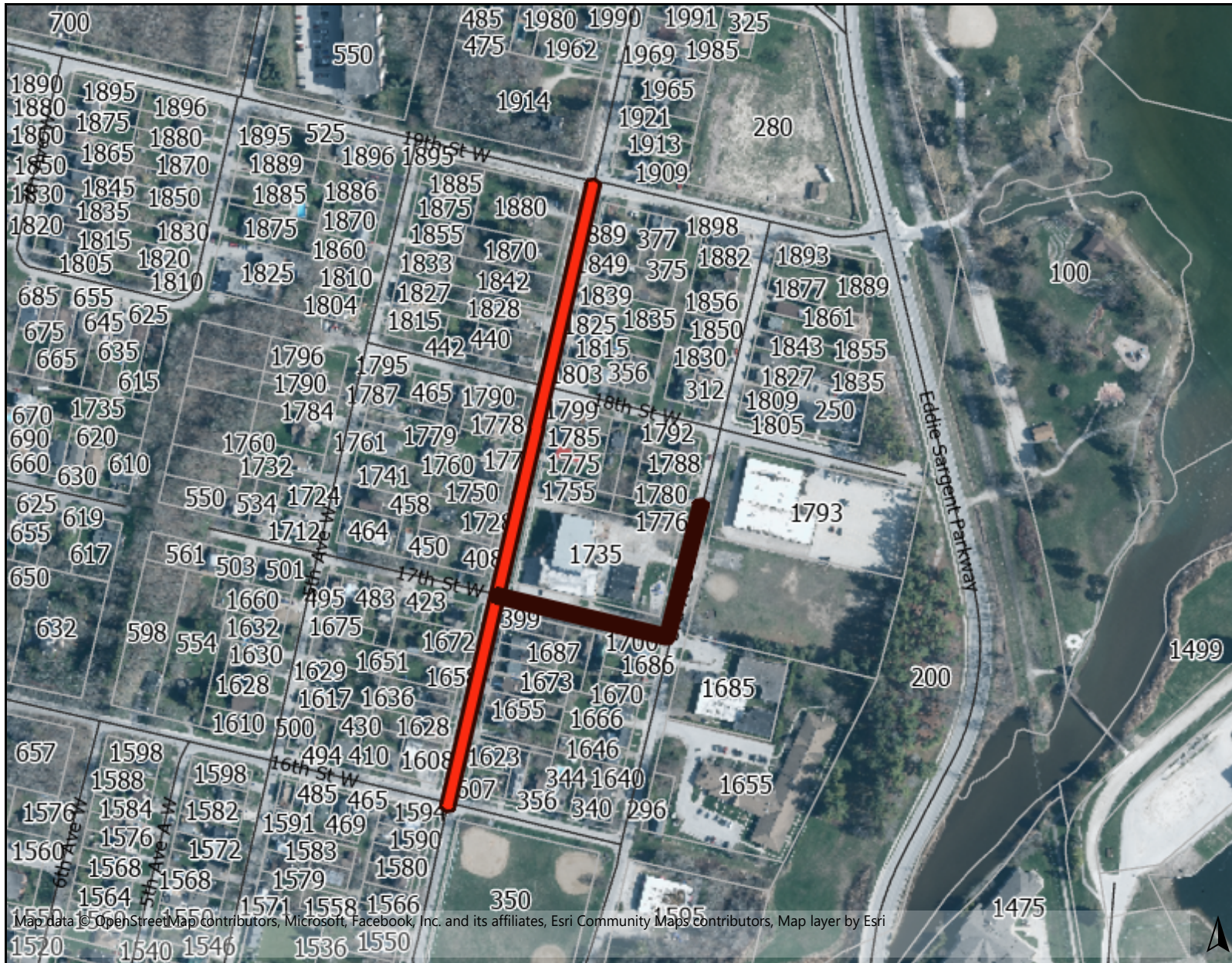
Notes

Map data © OpenStreetMap contributors, Microsoft, Facebook, Inc. and its affiliates, Esri Community Maps contributors, Map layer by Esri

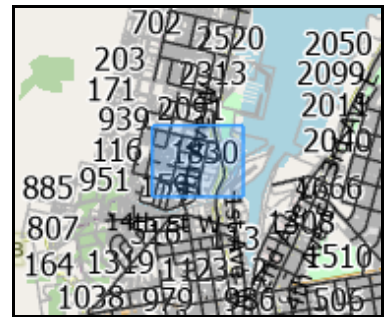


This map is a user generated static output from an Internet mapping site and is for reference only. Data layers that appear on this map may or may not be accurate, current, or otherwise reliable.

THIS MAP IS NOT TO BE USED FOR NAVIGATION



Map data © OpenStreetMap contributors, Microsoft, Facebook, Inc. and its affiliates, Esri Community Maps contributors, Map layer by Esri



Legend

ROADS

Roads

PROPERTY INFORMATION

Parcels

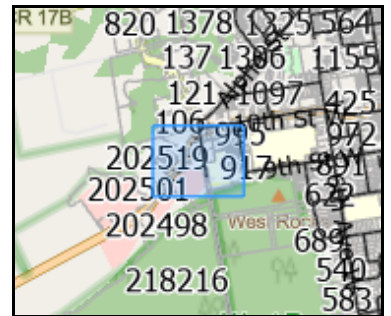


Notes

This map is a user generated static output from an Internet mapping site and is for reference only. Data layers that appear on this map may or may not be accurate, current, or otherwise reliable.

THIS MAP IS NOT TO BE USED FOR NAVIGATION

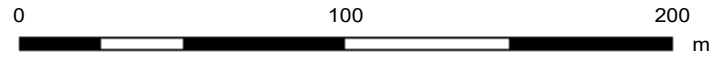
St. Basil's School Zone (30 km/h)



Legend

- ROADS
 - Roads
- PROPERTY INFORMATION
 - Parcels

Map data © OpenStreetMap contributors, Microsoft, Facebook, Inc. and its affiliates, Esri Community Maps contributors, Map layer by Esri



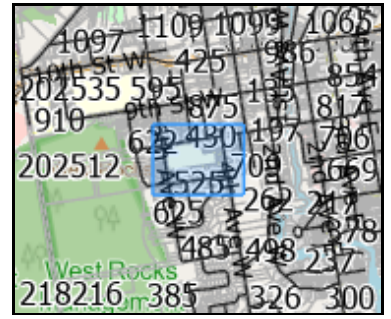
This map is a user generated static output from an Internet mapping site and is for reference only. Data layers that appear on this map may or may not be accurate, current, or otherwise reliable.

THIS MAP IS NOT TO BE USED FOR NAVIGATION

Notes



Map data © OpenStreetMap contributors, Microsoft, Facebook, Inc. and its affiliates, Esri, Community Maps contributors, Map layer by Esri

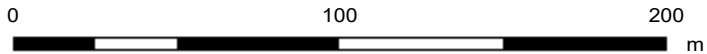


Legend

ROADS
Roads

PROPERTY INFORMATION
Parcels

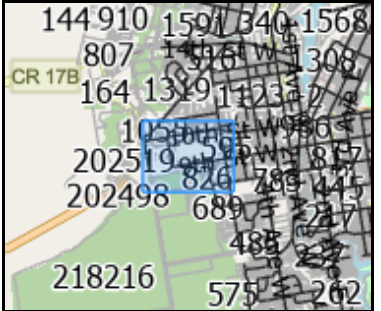
Notes



This map is a user generated static output from an Internet mapping site and is for reference only. Data layers that appear on this map may or may not be accurate, current, or otherwise reliable.

THIS MAP IS NOT TO BE USED FOR NAVIGATION

OSDS area (No school zone required)

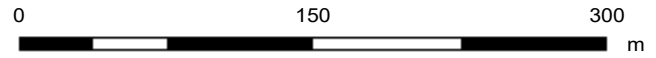


Legend

ROADS
Roads

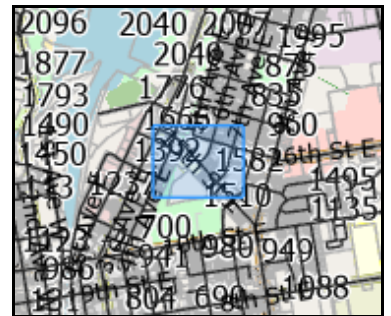
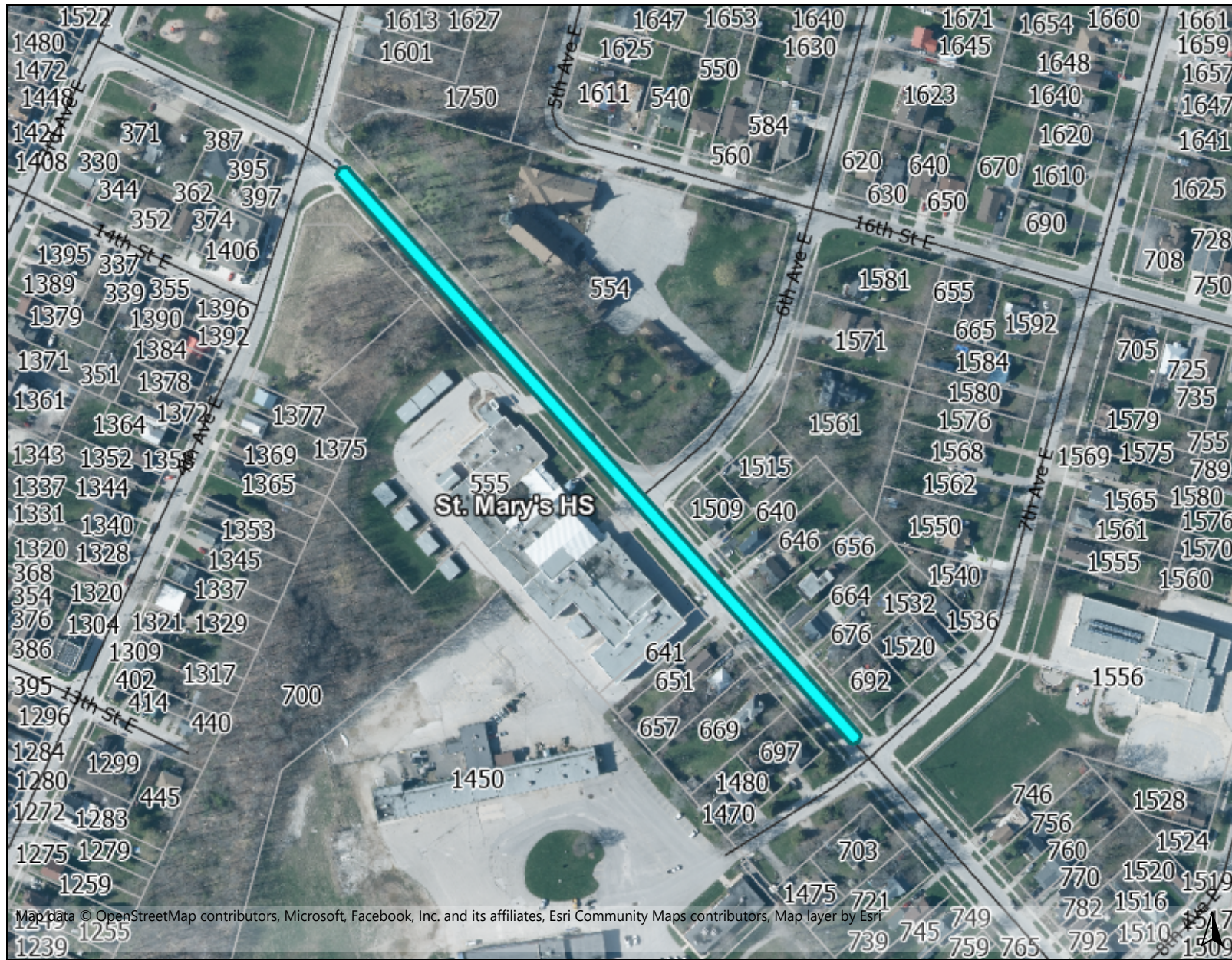
PROPERTY INFORMATION
Parcels

Notes
Showing periphery of Hillcrest and St. Basil's school zones in red



This map is a user generated static output from an Internet mapping site and is for reference only. Data layers that appear on this map may or may not be accurate, current, or otherwise reliable.

THIS MAP IS NOT TO BE USED FOR NAVIGATION

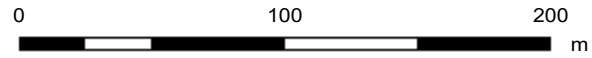


Legend

ROADS
Roads

PROPERTY INFORMATION
Parcels

Map data © OpenStreetMap contributors, Microsoft, Facebook, Inc. and its affiliates, Esri Community Maps contributors, Map layer by Esri



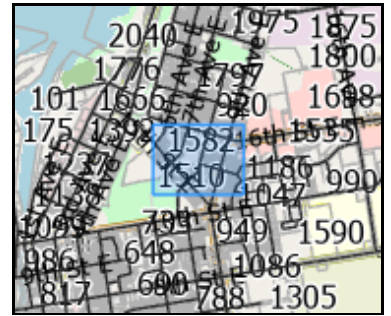
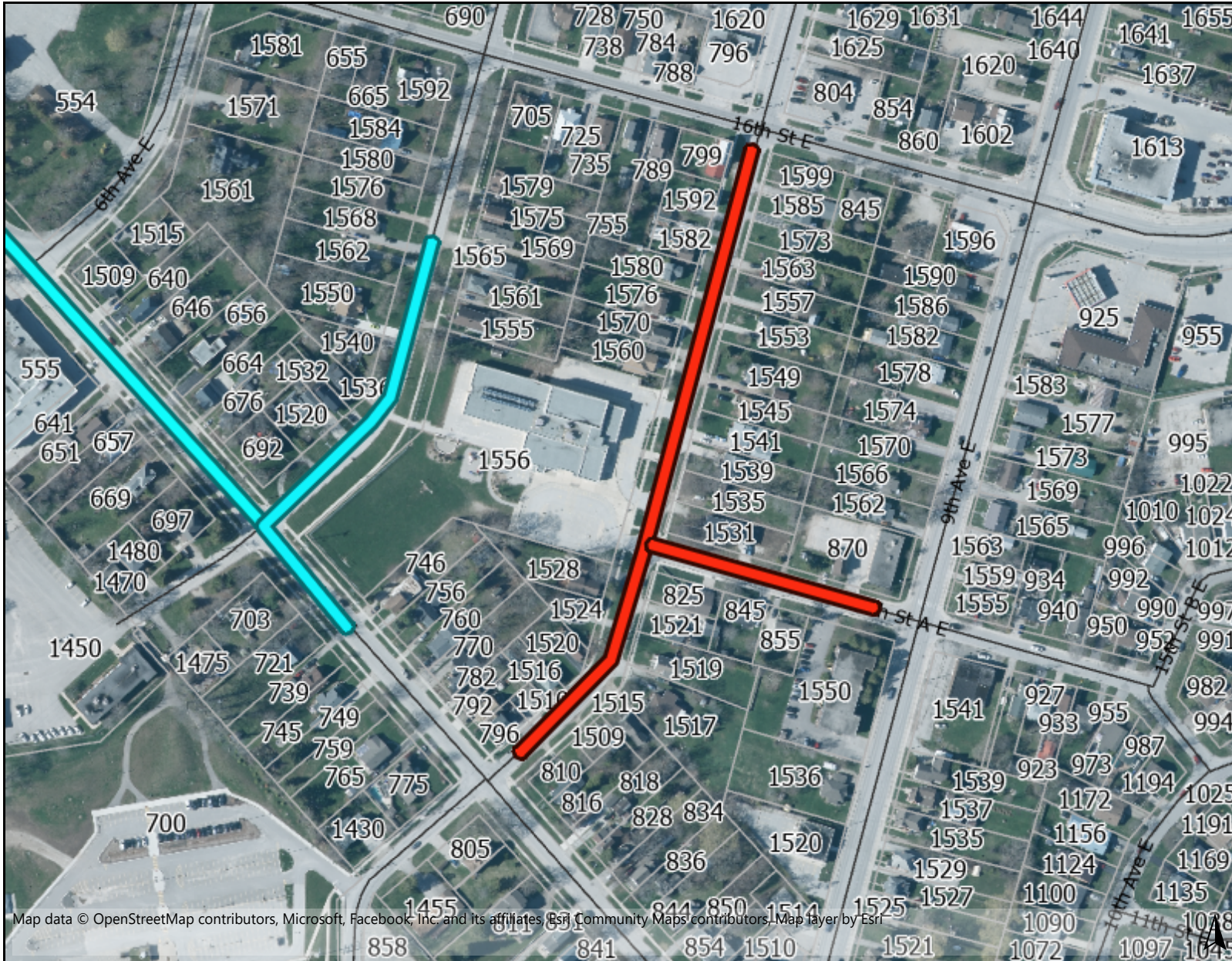
This map is a user generated static output from an Internet mapping site and is for reference only. Data layers that appear on this map may or may not be accurate, current, or otherwise reliable.

THIS MAP IS NOT TO BE USED FOR NAVIGATION

Notes

School Area involves warning signage but no speed limit reduction

St. Alexandra School Zone (30 km/h) and Area



Legend

ROADS

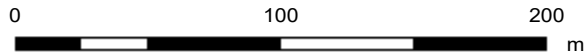
Roads

PROPERTY INFORMATION

Parcels



Map data © OpenStreetMap contributors, Microsoft, Facebook, Inc. and its affiliates, Esri, Community Maps contributors, Map layer by Esri

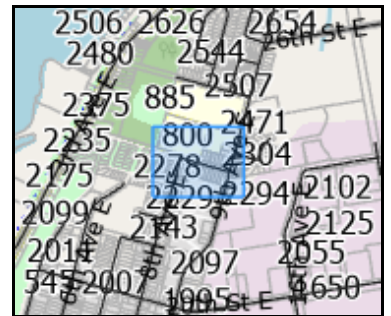


This map is a user generated static output from an Internet mapping site and is for reference only. Data layers that appear on this map may or may not be accurate, current, or otherwise reliable.

THIS MAP IS NOT TO BE USED FOR NAVIGATION

Notes

School area (shown in cyan) requires warning but no speed reduction. School Zone (shown in red) denotes 30 km/h limit.

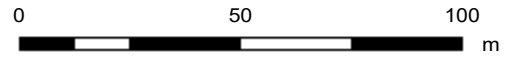


Legend

ROADS
Roads

PROPERTY INFORMATION
Parcels

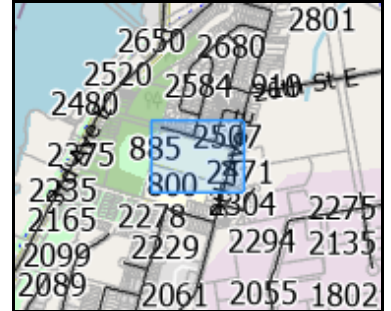
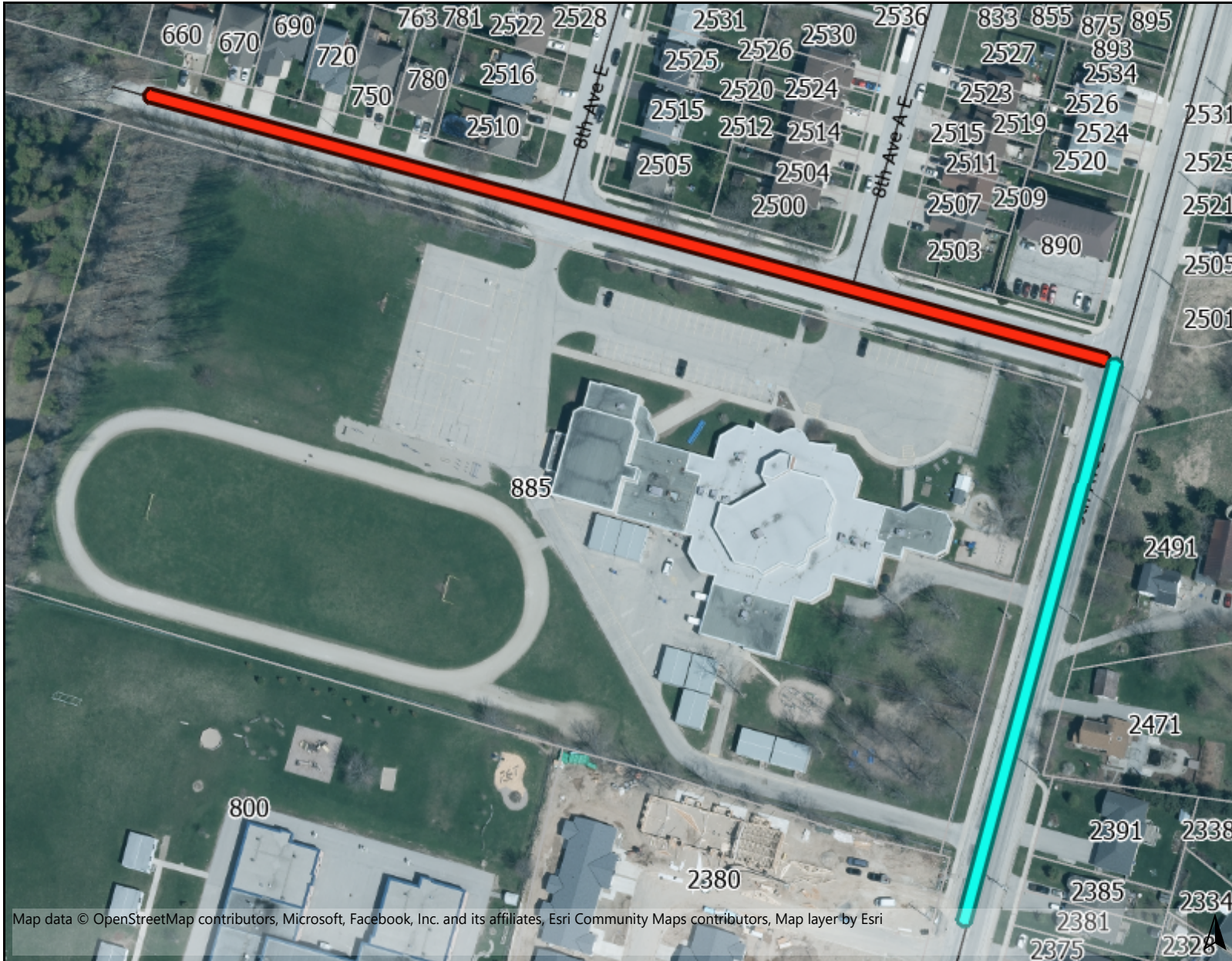
Map data © OpenStreetMap contributors, Microsoft, Facebook, Inc. and its affiliates, Esri Community Maps contributors, Map layer by Esri



This map is a user generated static output from an Internet mapping site and is for reference only. Data layers that appear on this map may or may not be accurate, current, or otherwise reliable.

THIS MAP IS NOT TO BE USED FOR NAVIGATION

Notes
Red = School Zone with reduced speed, cyan = adjacent School Area (no speed reduction)

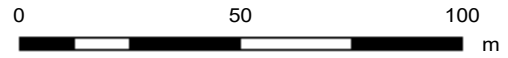


Legend

ROADS
Roads

PROPERTY INFORMATION
Parcels

Map data © OpenStreetMap contributors, Microsoft, Facebook, Inc. and its affiliates, Esri Community Maps contributors, Map layer by Esri



This map is a user generated static output from an Internet mapping site and is for reference only. Data layers that appear on this map may or may not be accurate, current, or otherwise reliable.

THIS MAP IS NOT TO BE USED FOR NAVIGATION

Notes
Red = School Zone including 30 km/h speed limit. Cyan = School Area with warning sign but no speed reduction.