

TTAG BAS Expansion

23M.40

Priority Score: 39.60

Project Type: Enhancement

Growth Related?: No

Estimated Useful Life (years): N/A

Priority Level: Moderate

Department: Corporate Services

Staff Contact: Bradey Carbert

Cash Flow Projection:	2022	2023	2024+
Studies			
In House Engineering			
Design or Engineering			
Communication / Signage			
Construction / Contractor			
Materials			
Equipment/Misc		\$ 75,000	
Contingency			
Total	\$ 0	\$ 75,000	\$ 0

Costs Incurred to 2021 Year End

Impact on Operating Budget \$ 0 \$ 0

Total Project Budget: \$ 75,000

Schedule:

Construction Start Date:

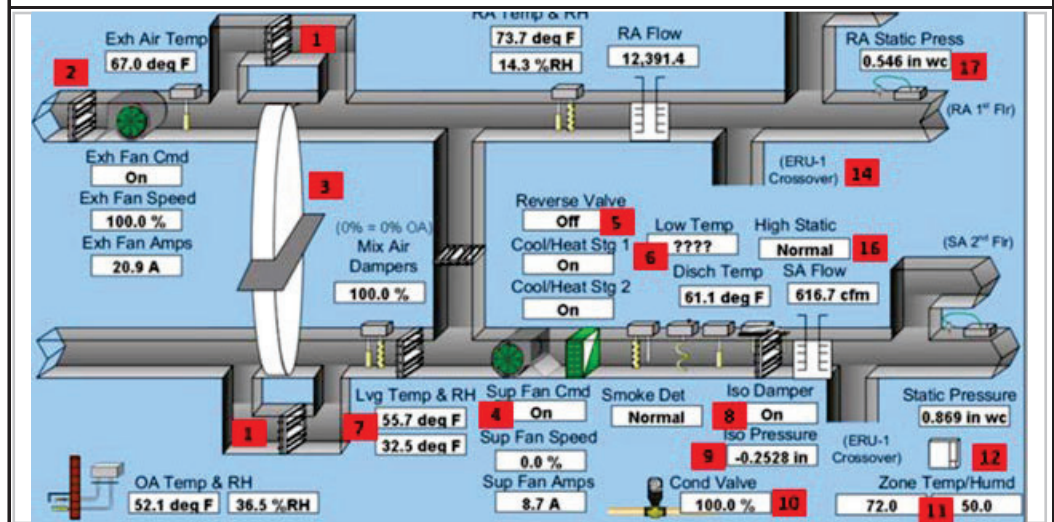
Substantial Completion or
purchase date:

Funding Sources:

Tax Levy	\$ 75,000
Please Select	\$ 0
Please Select	\$ 0
Please Select	\$ 0
Please Select	\$ 0
Capital Reserve	\$ 0

Description and Rationale:

The Tom Thomson Art Gallery (TTAG) is served by four indoor air handling units (AHU), with remote mounted condensing units (CU). The heat is provided by two boilers. There is a limited building automation system (BAS) that controls the basement and main entrance AHUs, with the remaining systems running on stand alone controls. The capacity of the existing BAS is limited and user privileges are poor. The expansion will add temperature and humidity monitoring to the gallery and alarming system functionality for staff notification. The replacement would also include new time of day clocks with scheduling permissions. It should be noted that with the replacement of other mechanical equipment, the expansion to the BAS will be included in the base price.



TTAG BAS Expansion

23M.40

Priority Score: 39.60

Justification for Matrix Values

Score 0 - 5

Justification / Rationale for Rating

People	How many people will be directly impacted by the project?	5	> 10,000.
Health and Safety	What is the risk to the health and safety of the public or Staff if the project does not proceed?	1	Minor injuries not requiring medical attention may result from poor air quality within the facility.
Legislation	Is the project required for legislative/regulatory compliance?	1	No known legislative/regulatory compliance requirement
Asset Management	Is the project a high priority for replacement in the asset management plan.	4	High probability of failure; moderate consequence.
Operational Performance	If the project proceeds (or fails to proceed), what will be the impact on operational performance? Comment on any impact on operating costs, staff time and maintenance.	3	Operational Efficiencies will be achieved.
Financing	Can the cost of investment be leveraged or are there partnership funds available?	0	No opportunity for partnership or grant funding.
Environment	Does the project address needs impacted by climate change?	1	Little or no impact on environment as a result of the project.
Socio-Economic Factors	To what degree does the project support diversity and inclusion Initiatives?	2	Maintains and exisiitng space.
Strategic Plan	Does the project help to meet a Key Result in the Strategic Plan?	1	Project supports core service delivery.
Public Input	Has the project been identified through public engagement?	0	Has not been identified by the public.