

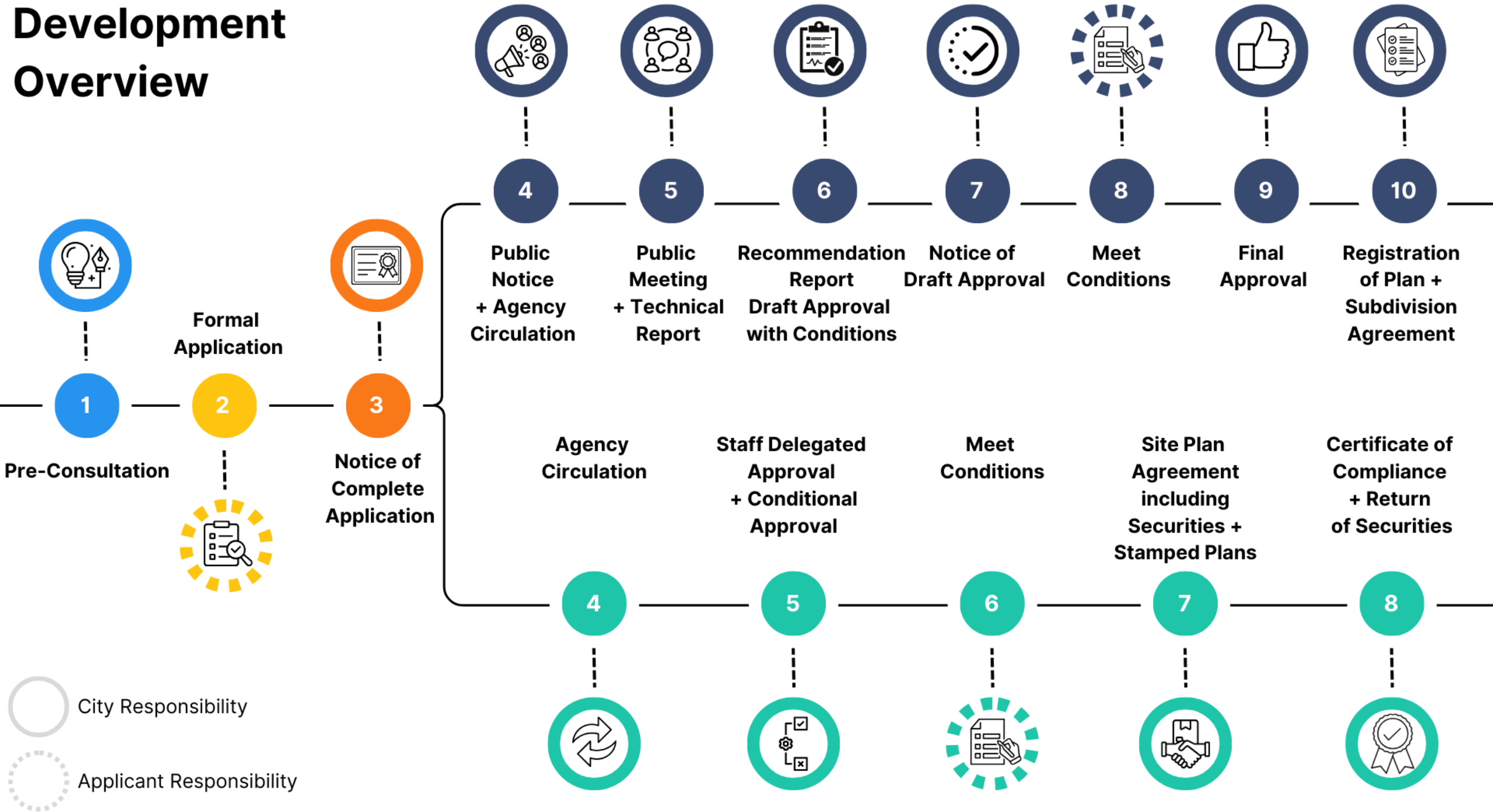


Development Update

Community Services Committee


April 17, 2024


Development Overview



Subdivision Development Overview

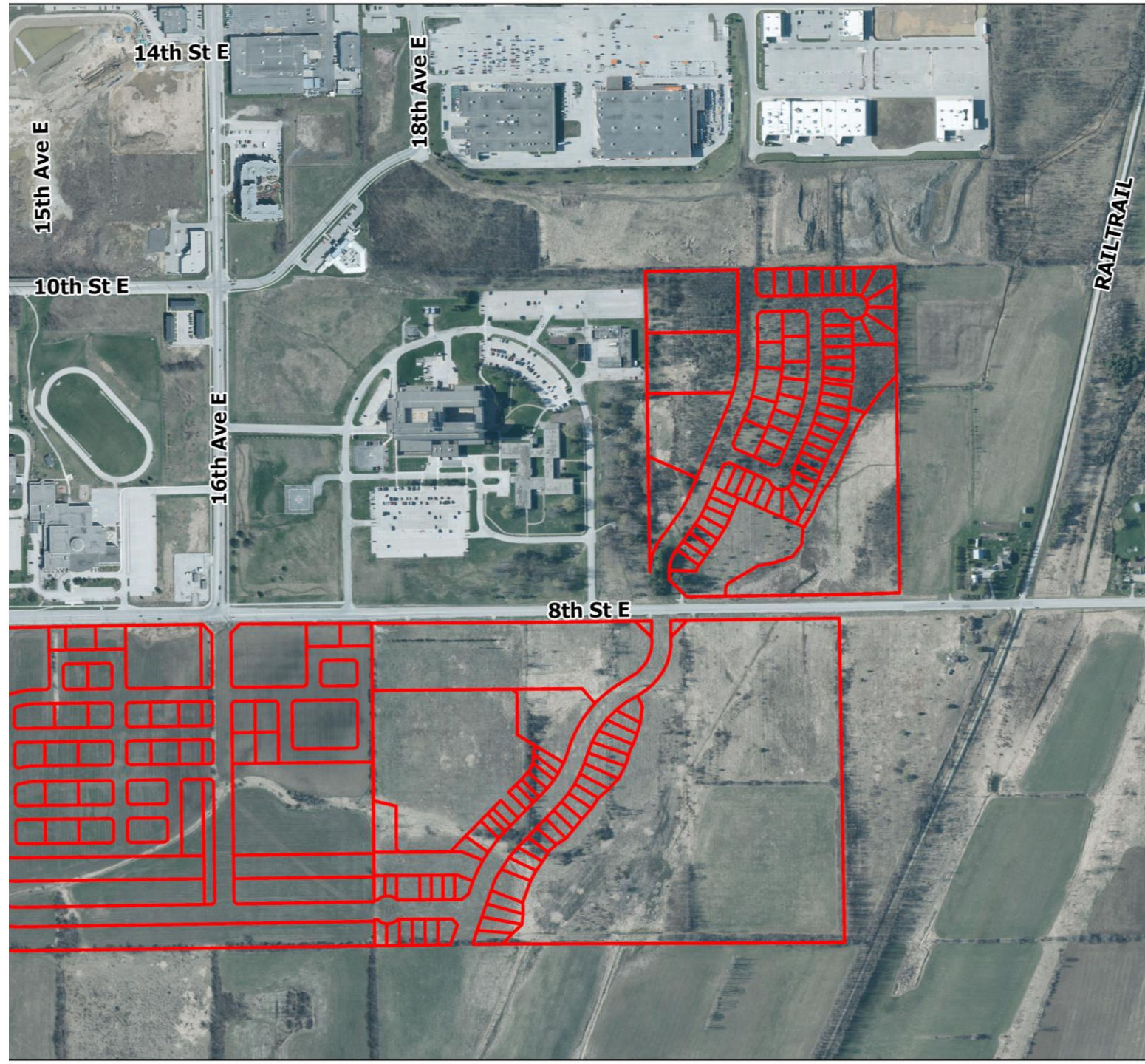


 City Responsibility

 Applicant Responsibility





Draft Approved Plans of Subdivision



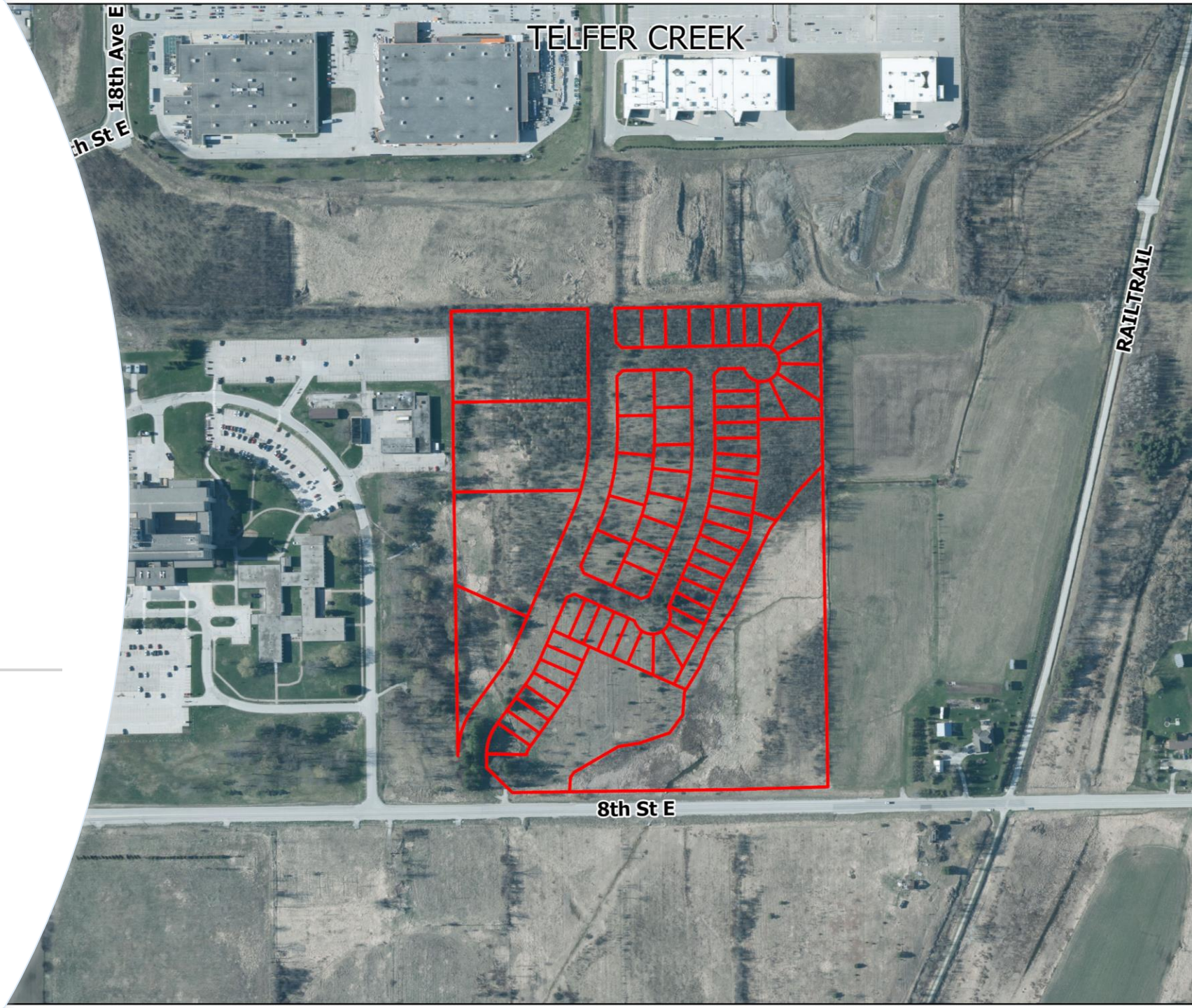
Subdivision Development Overview



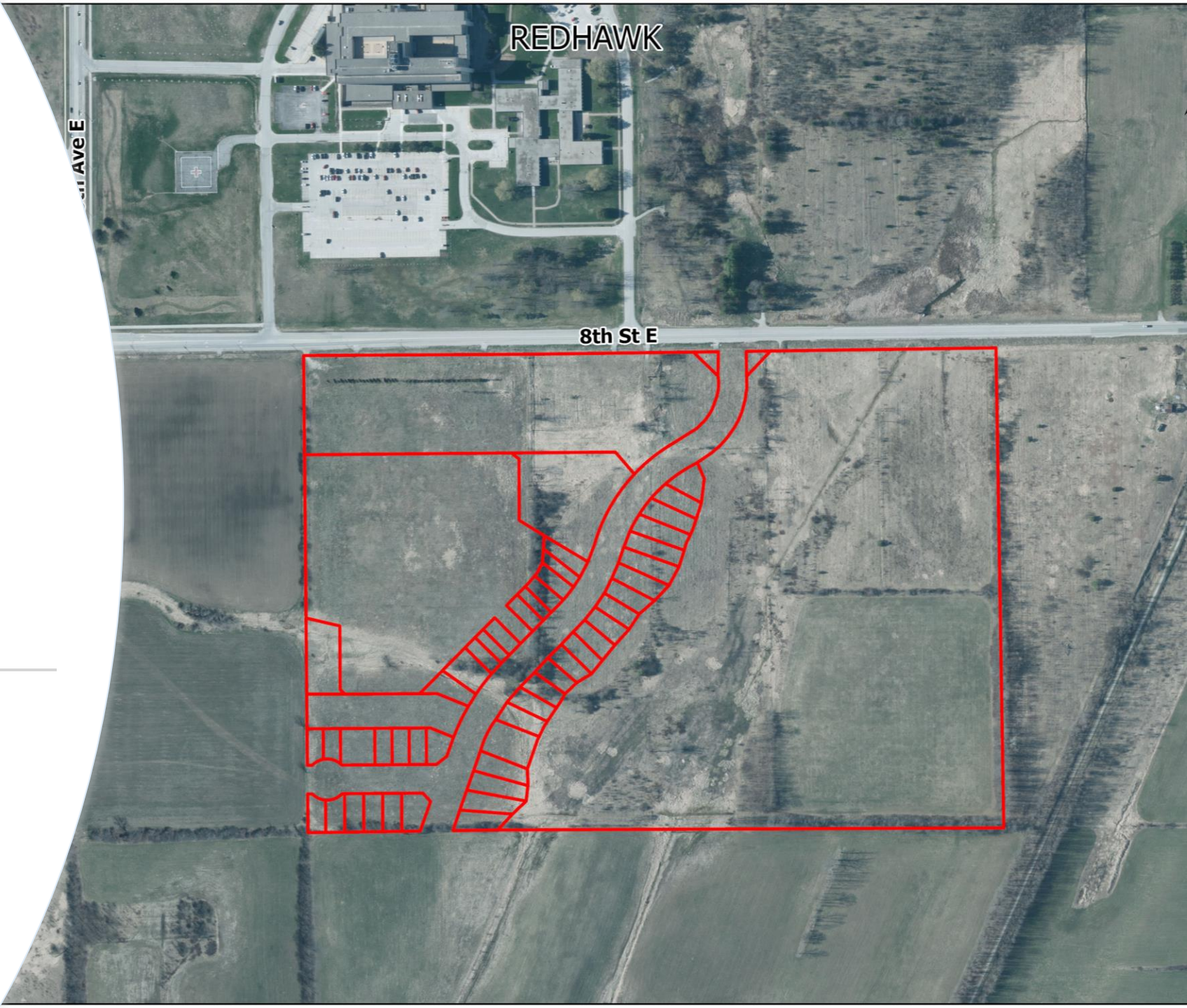
 City Responsibility

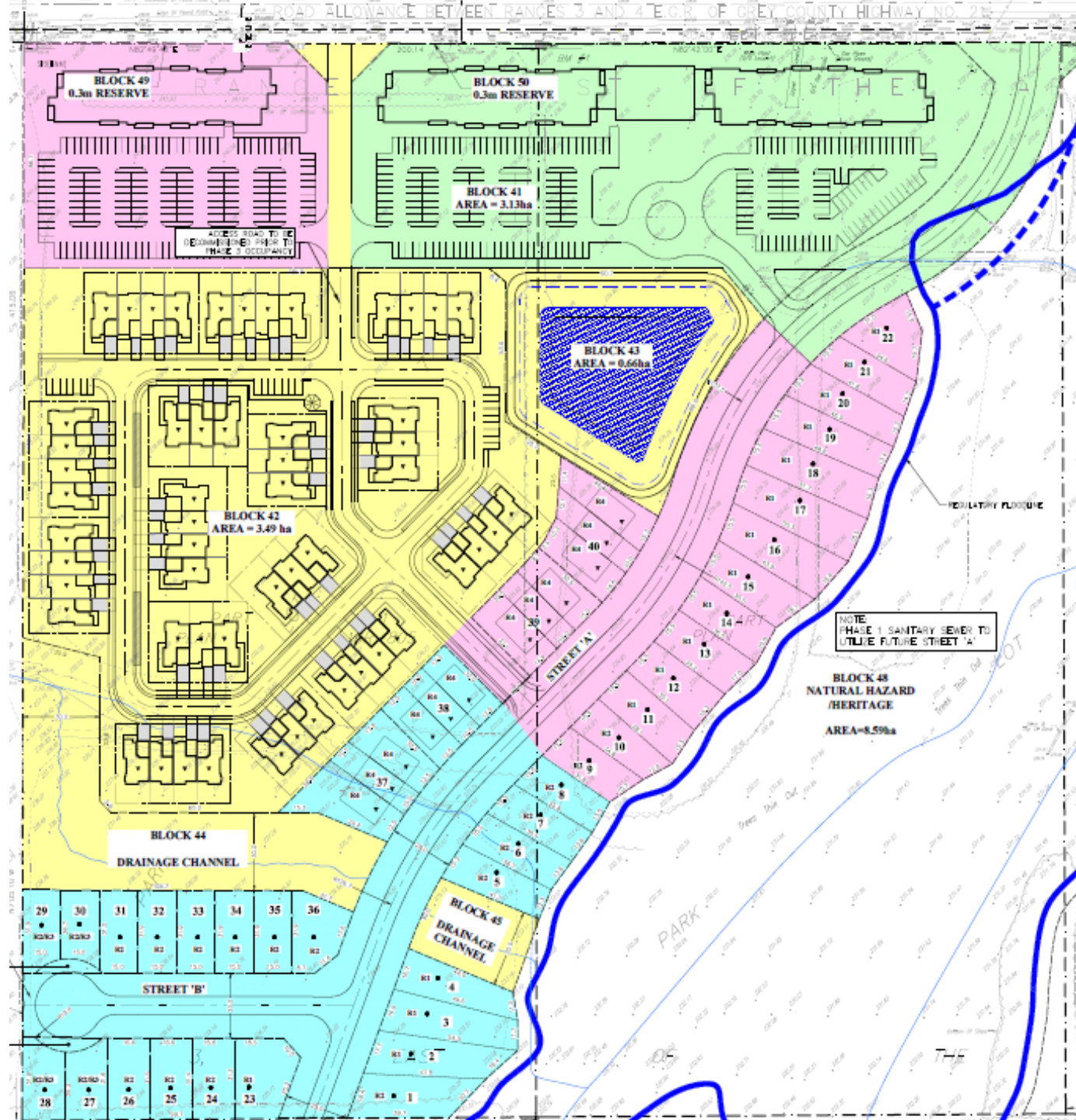
 Applicant Responsibility

Telfer Creek

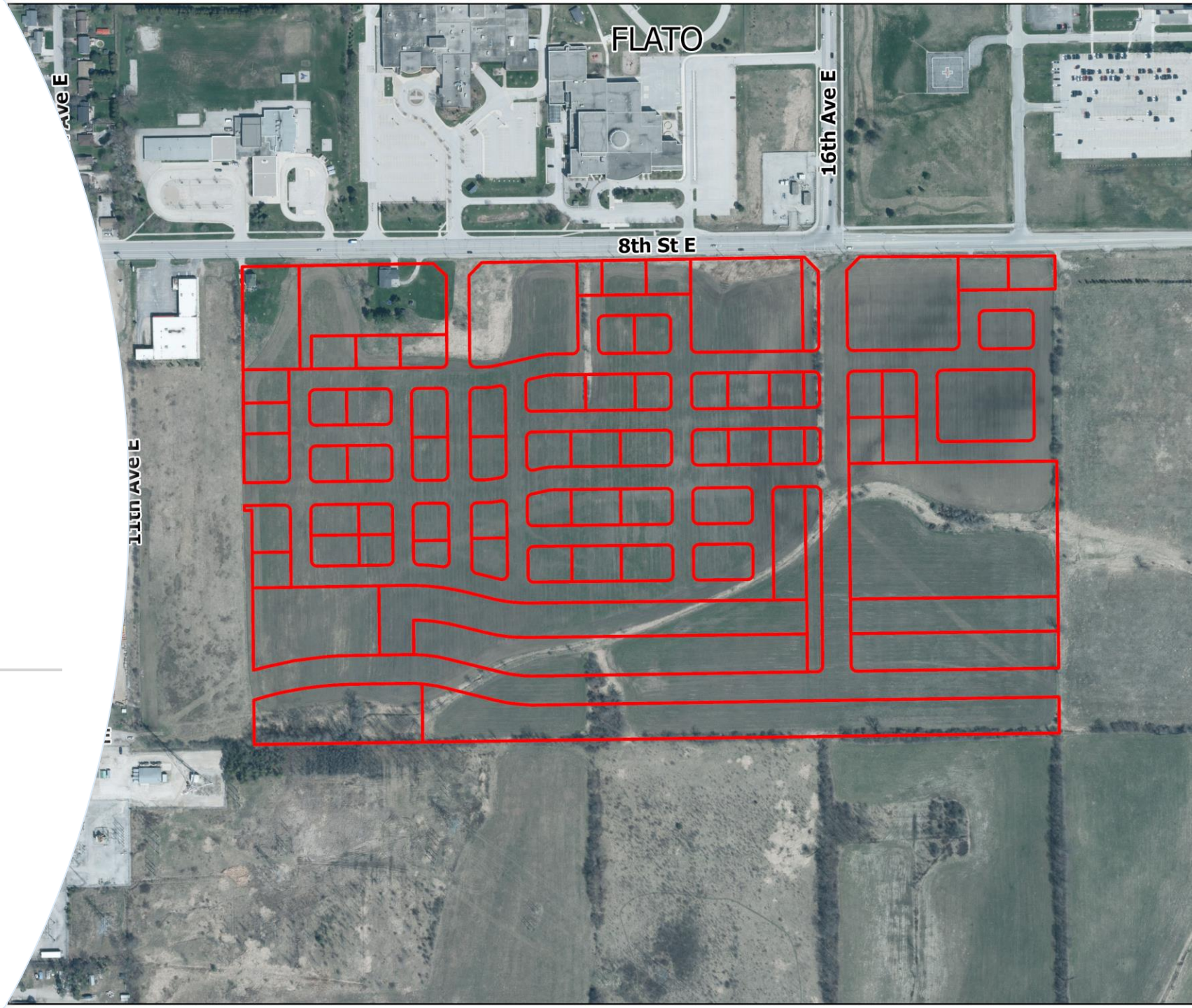


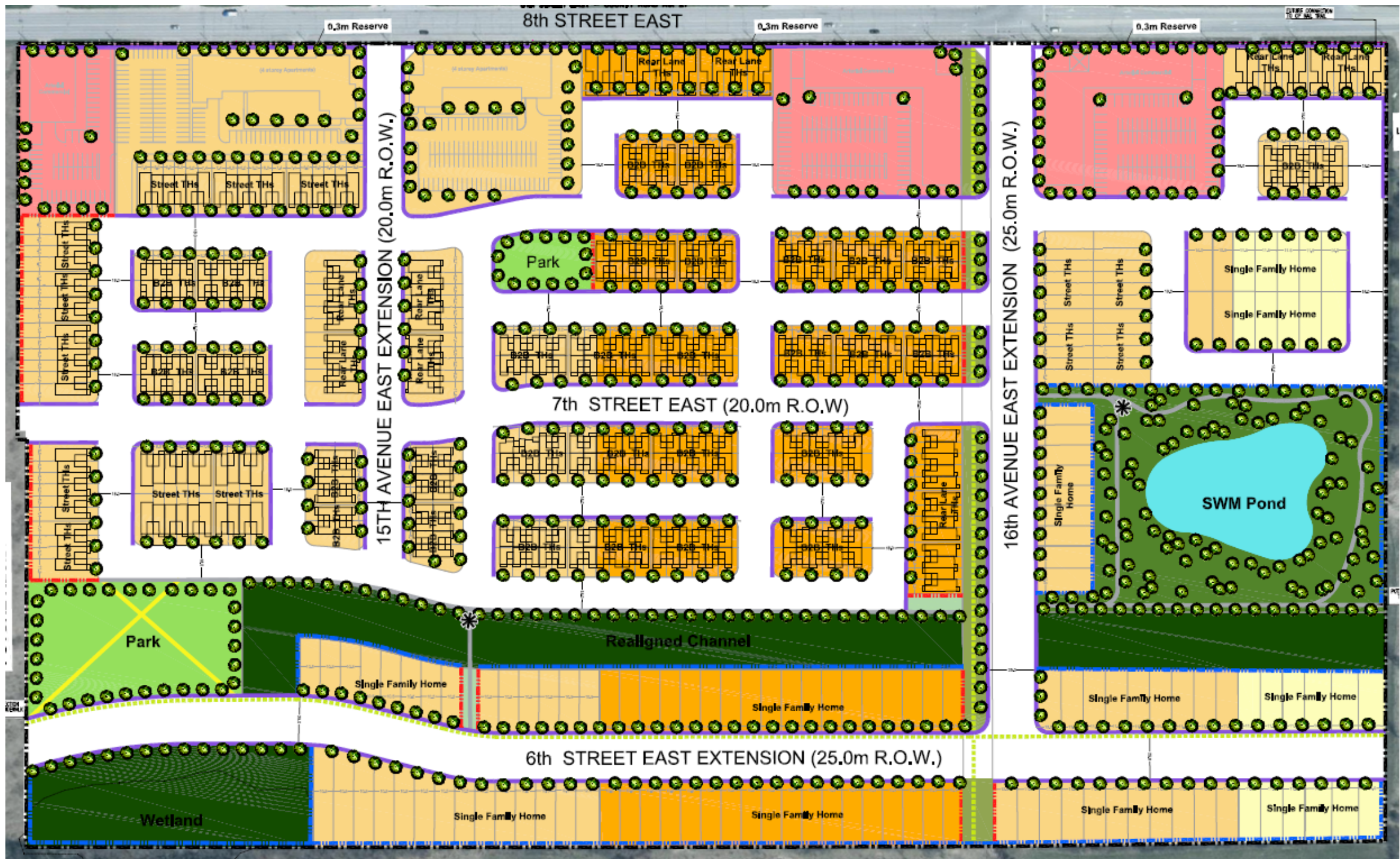
Redhawk

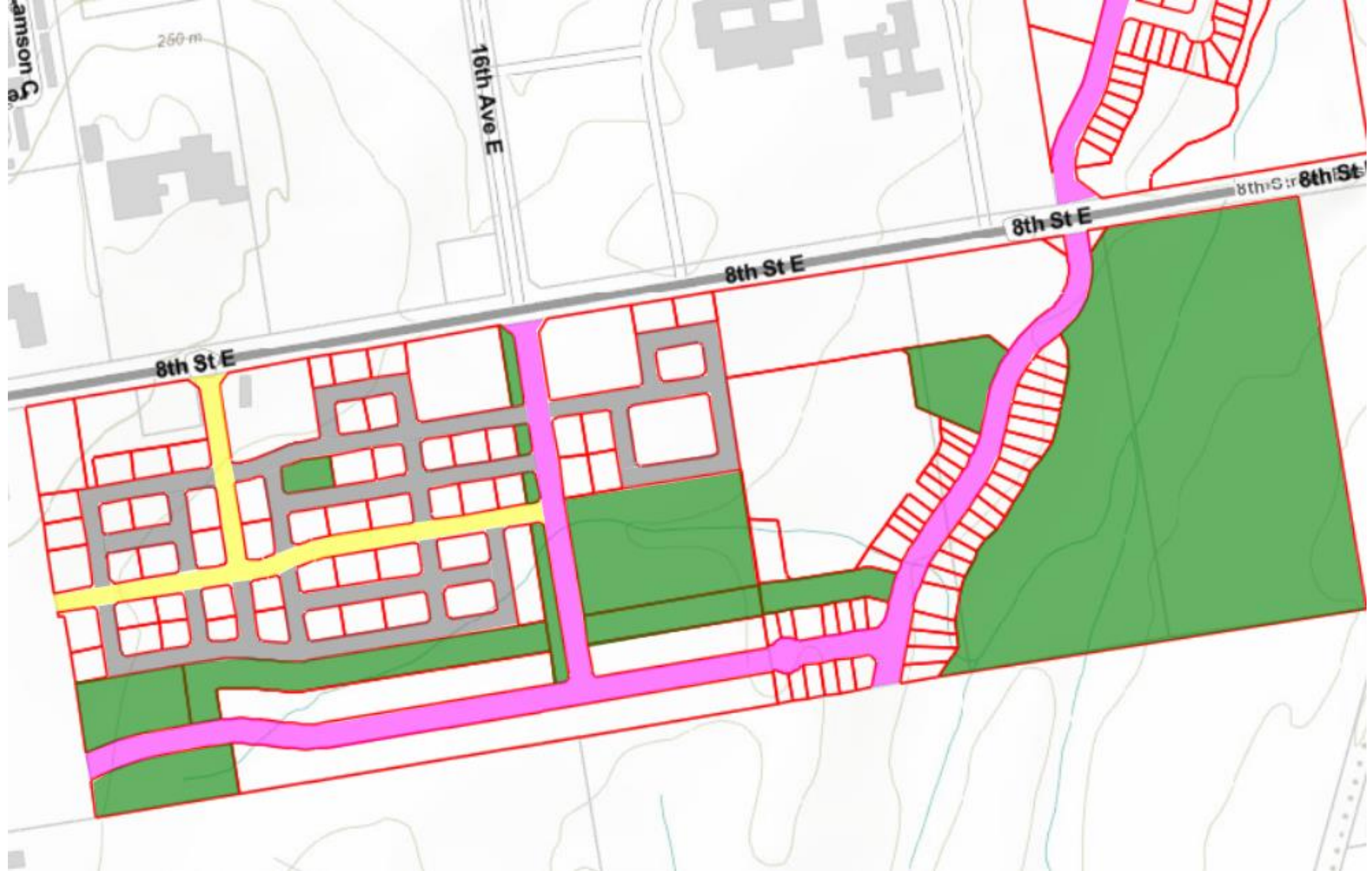




Greystone Village

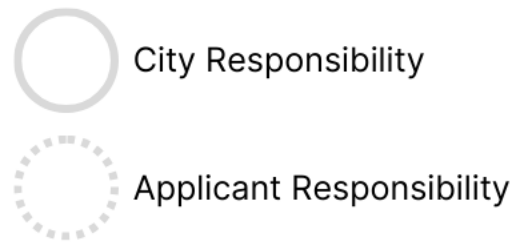
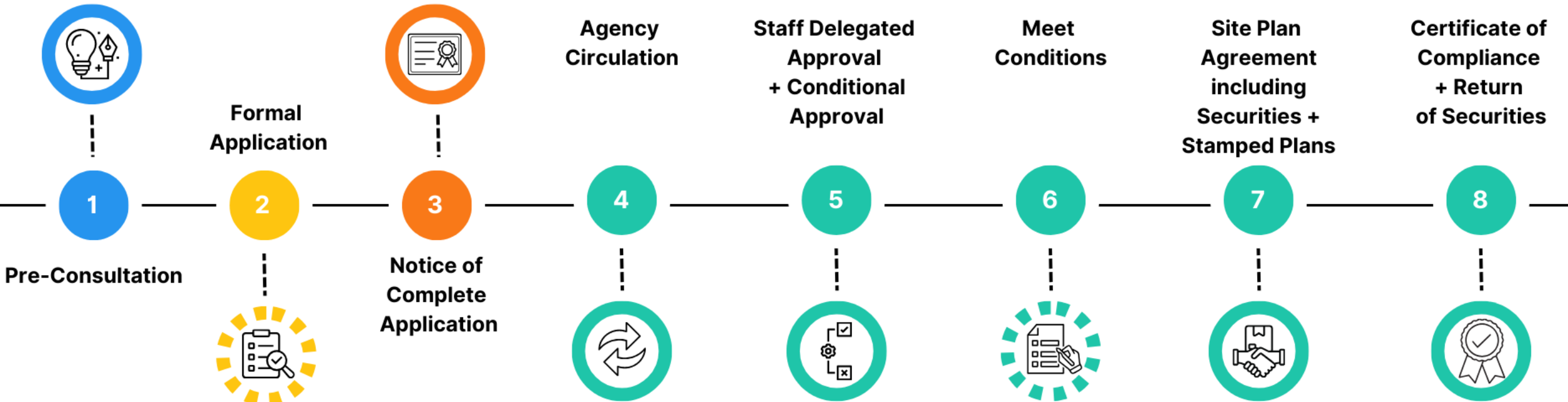






Site Plan

Development Overview

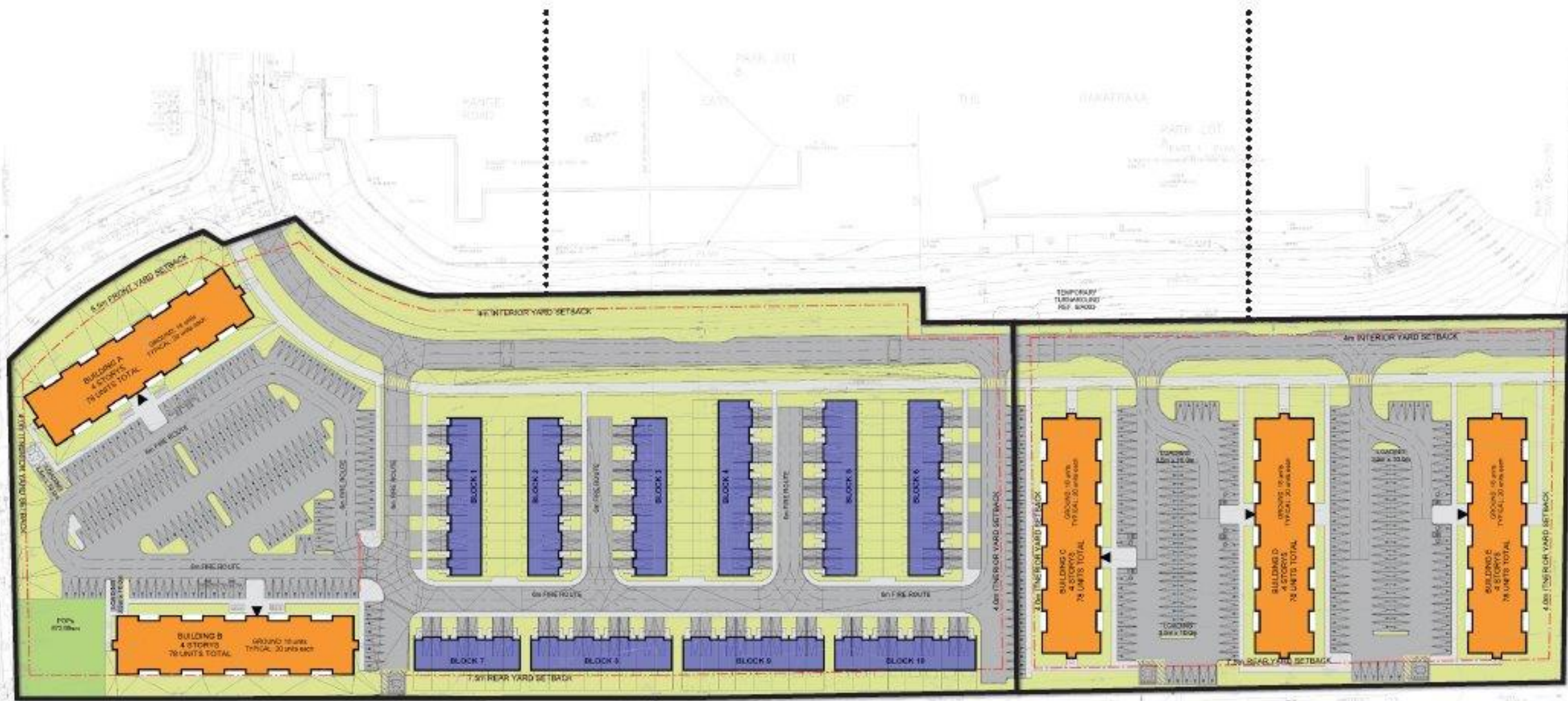


1555 18th
Avenue East



PHASE 1

PHASE 2







3195 East Bayshore Road



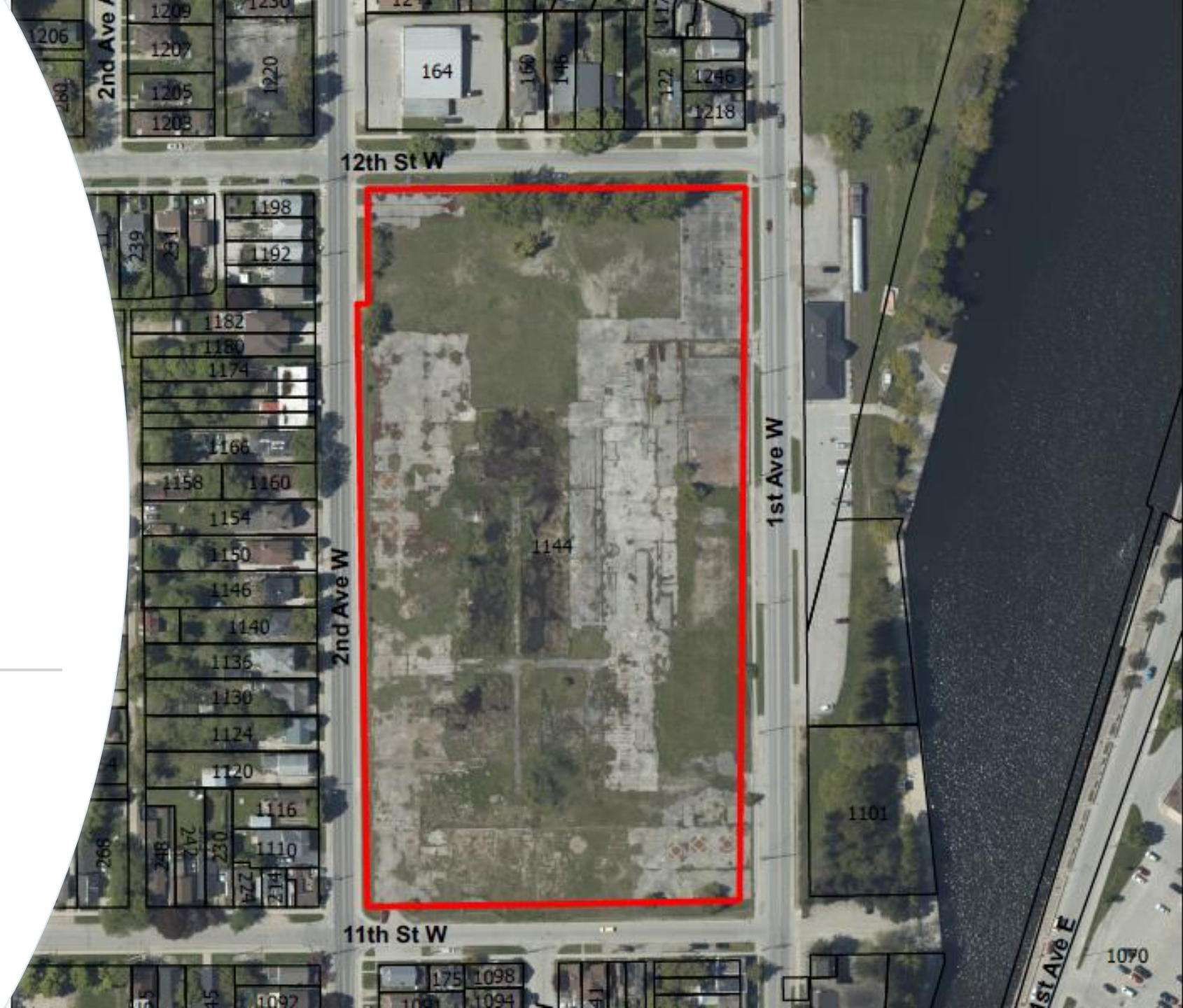


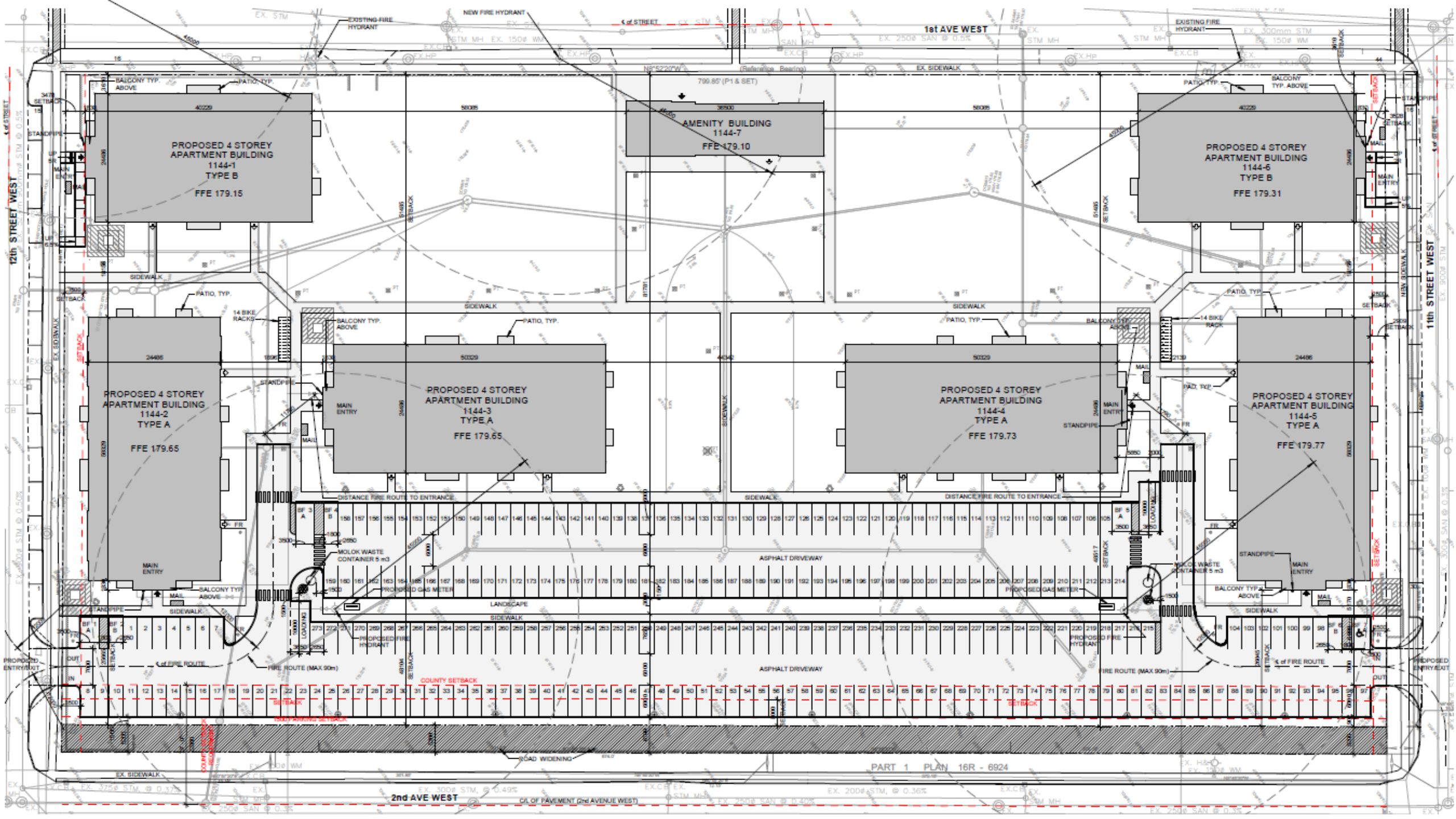


BLOCK B



1144 1st
Avenue West





PROPOSED 4 STOREY APARTMENT BUILDING
1144-1
TYPE B
FFE 179.15

EXISTING AMENITY BUILDING
1144-7
FFE 179.10

PROPOSED 4 STOREY APARTMENT BUILDING
1144-5
TYPE B
FFE 179.31

PROPOSED 4 STOREY APARTMENT BUILDING
1144-2
TYPE A
FFE 179.65

PROPOSED 4 STOREY APARTMENT BUILDING
1144-3
TYPE A
FFE 179.65

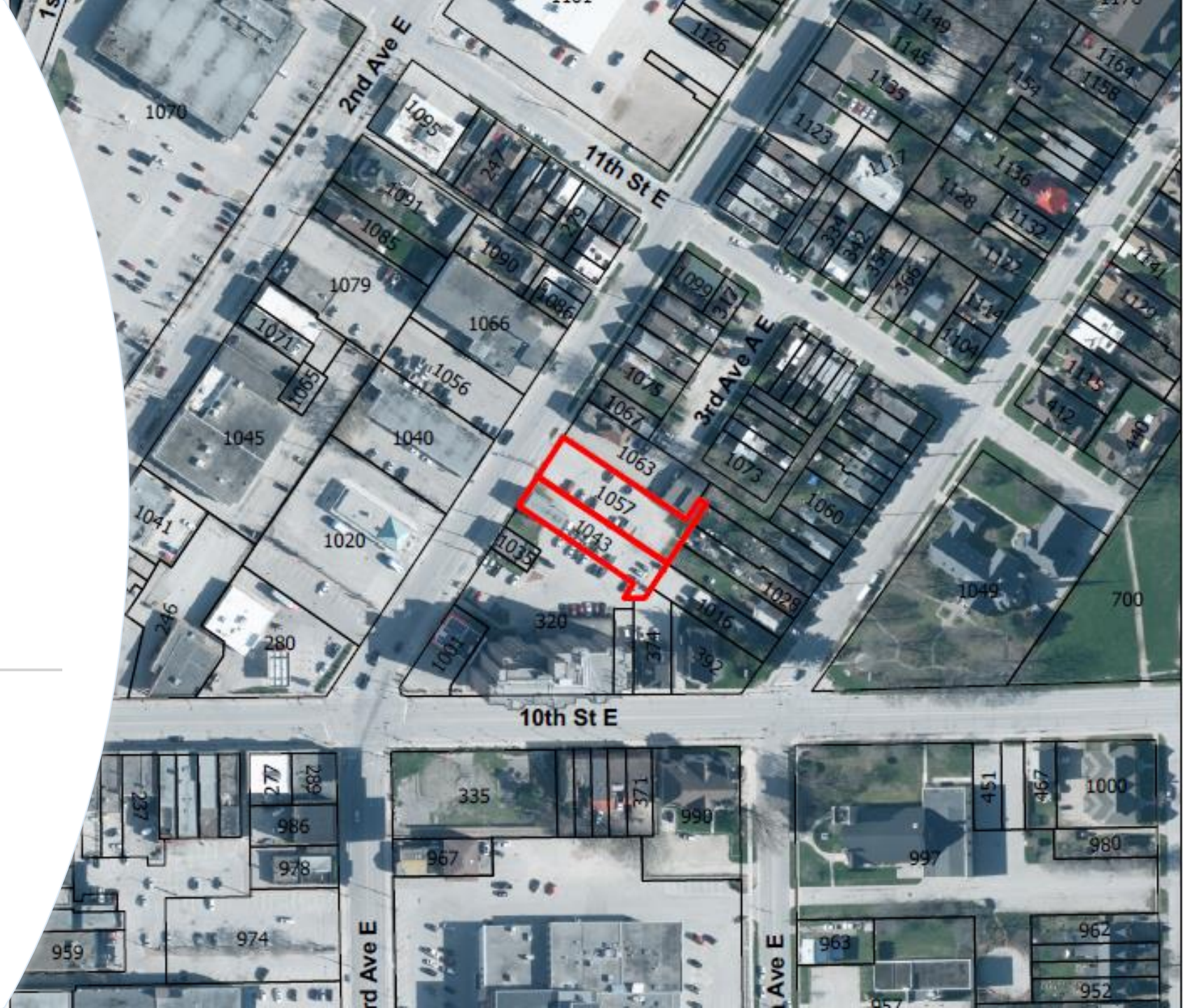
PROPOSED 4 STOREY APARTMENT BUILDING
1144-4
TYPE A
FFE 179.73

PROPOSED 4 STOREY APARTMENT BUILDING
1144-5
TYPE A
FFE 179.77





1043 & 1057
3rd Avenue
East





2125 16th
Street East





FRESHCO


highest prices


PETSMART

Policy

Development Overview

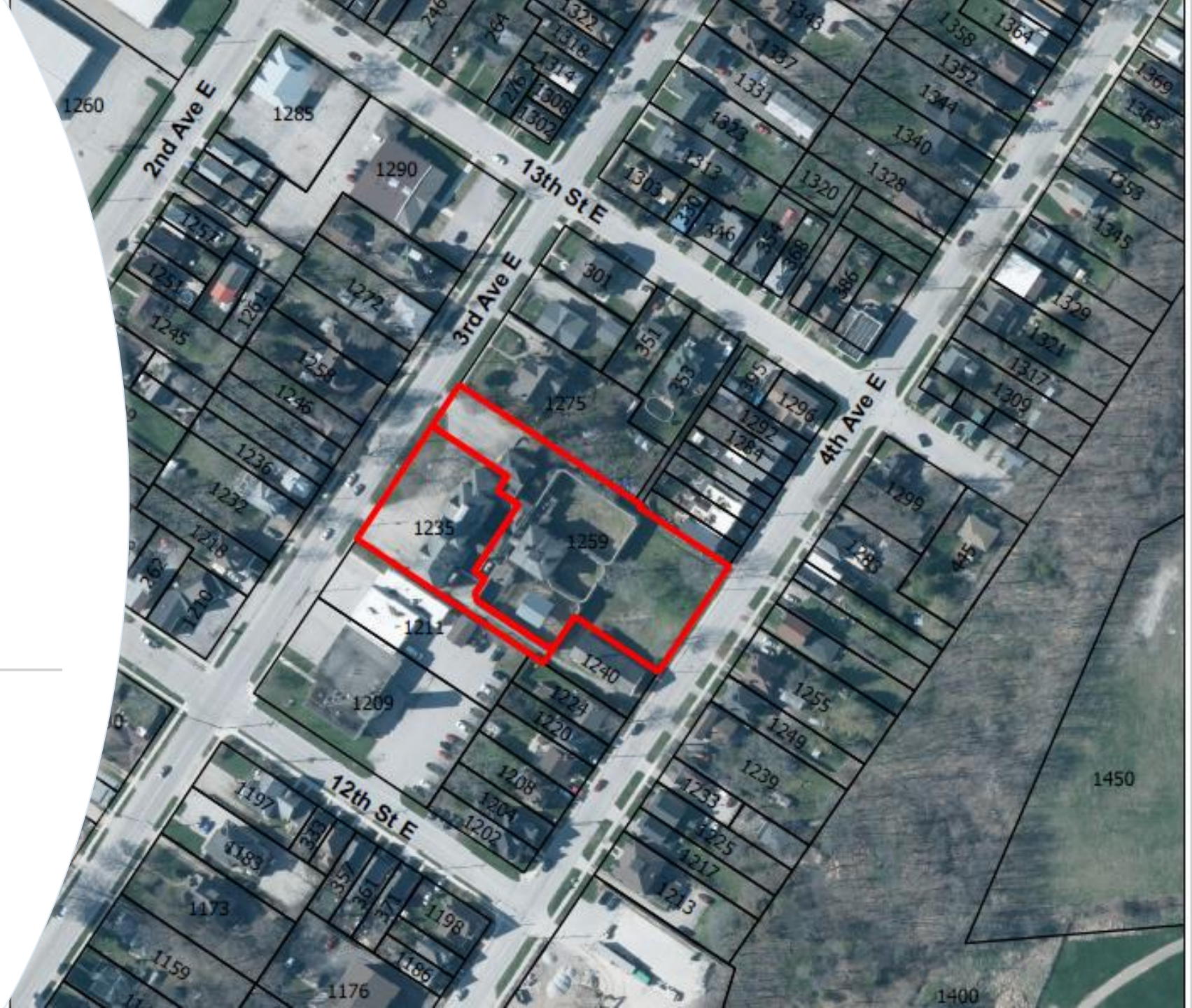


 City Responsibility

 Applicant Responsibility

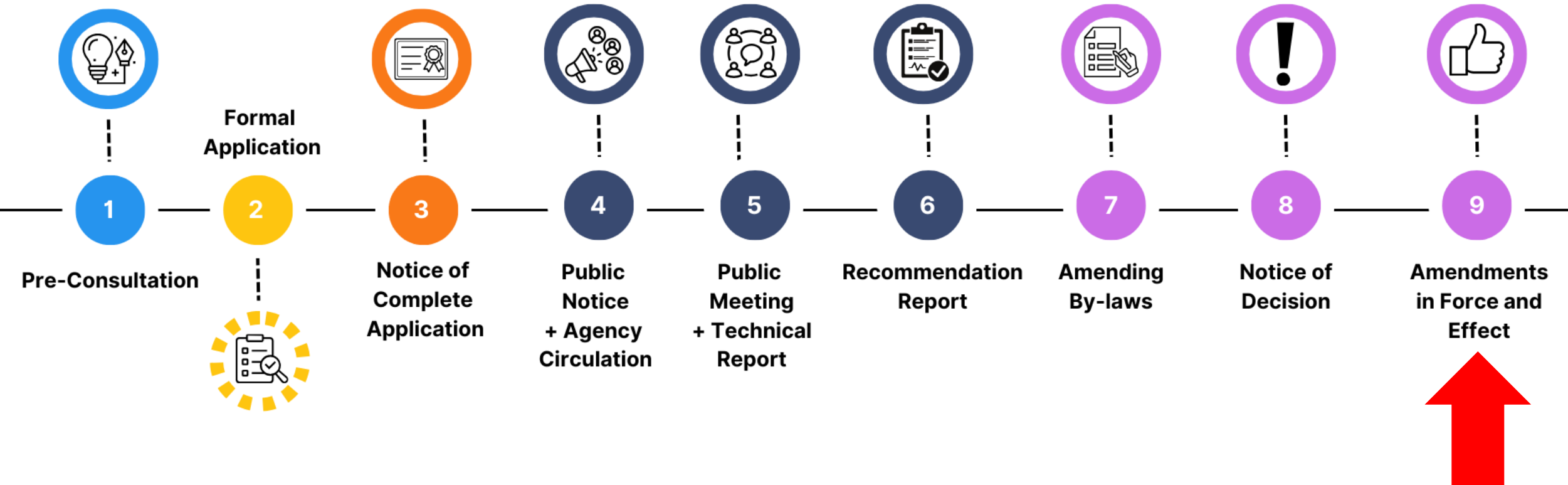



1235 & 1259 3rd Avenue East




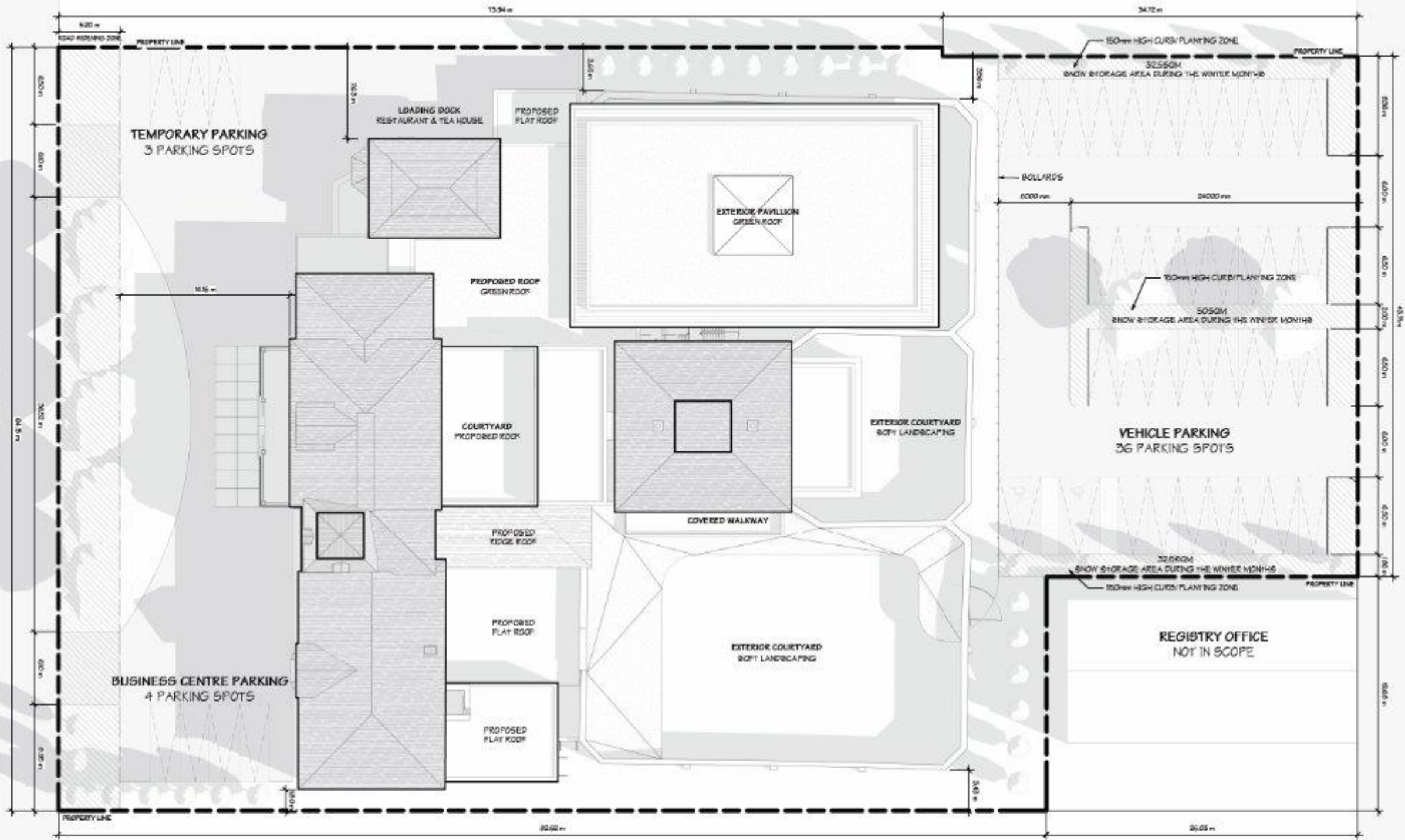
Policy

Development Overview



 City Responsibility

 Applicant Responsibility



2nd Avenue East

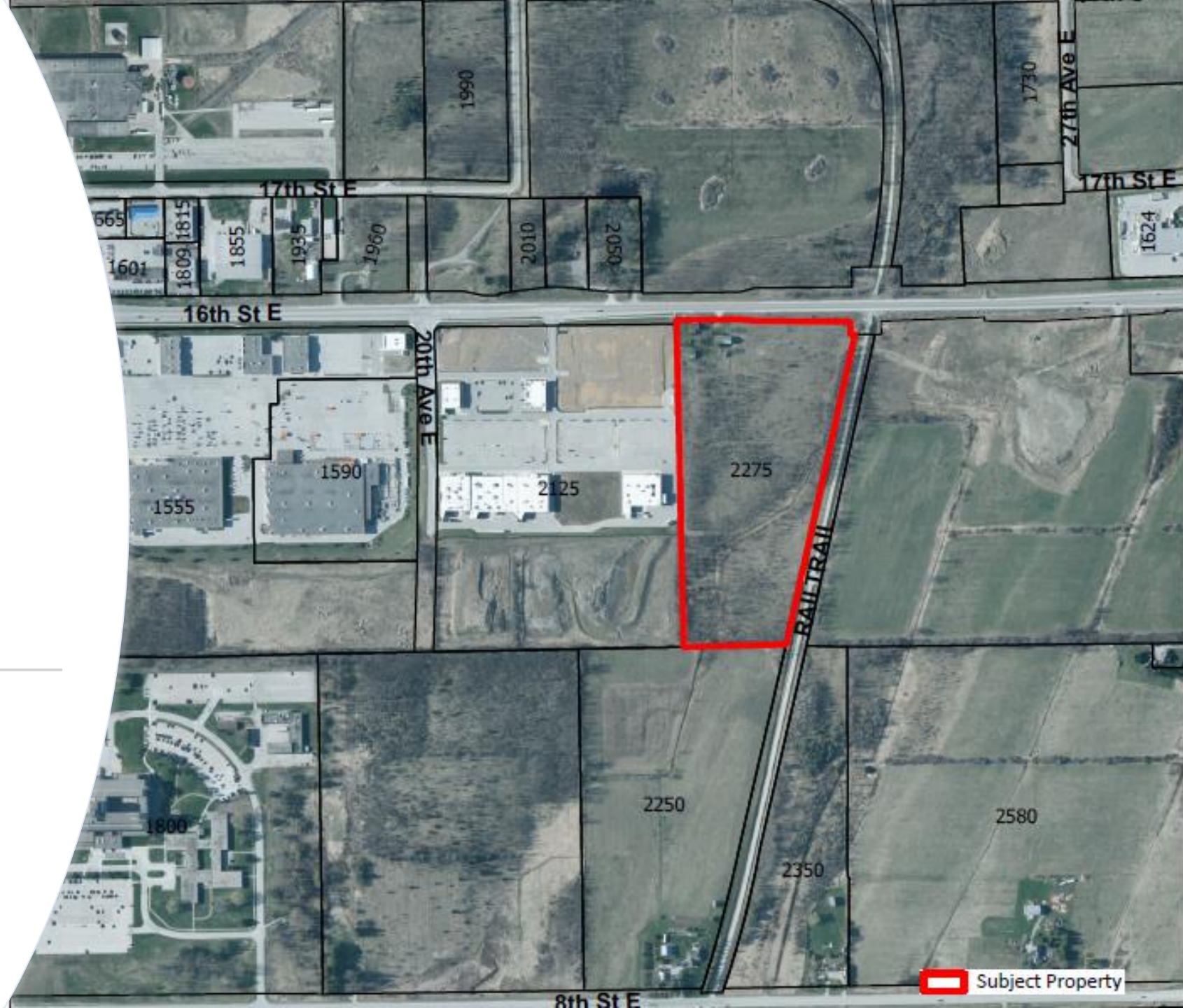
4th Avenue East







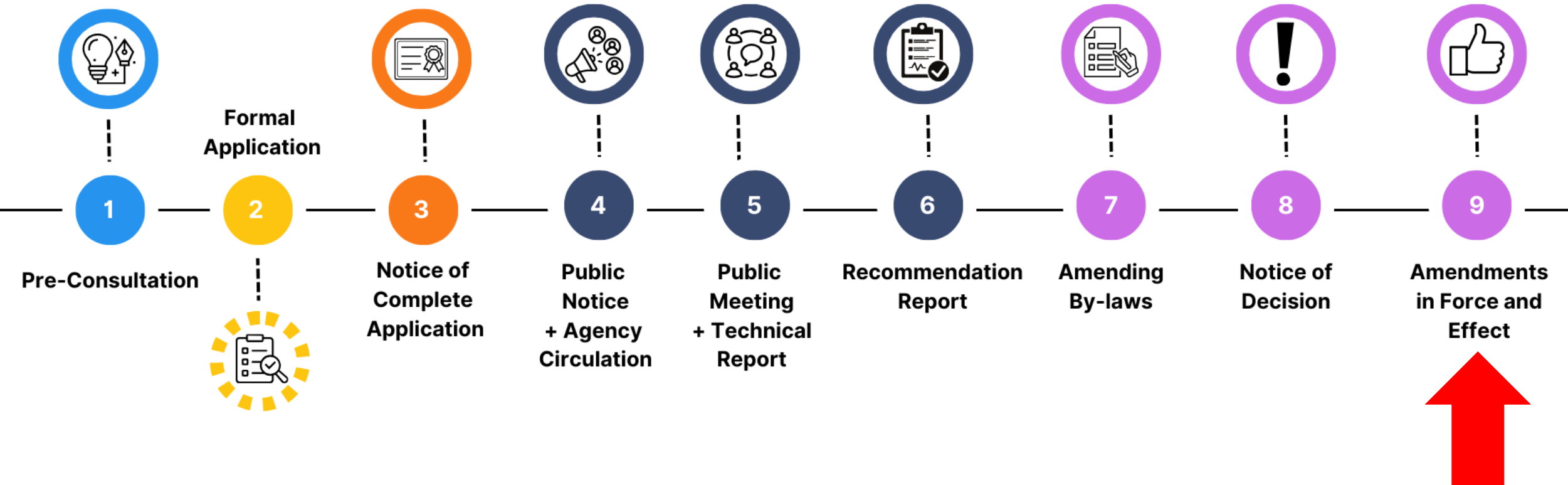
2275 16th
Street East





Subject Property

Policy

Development Overview



 City Responsibility

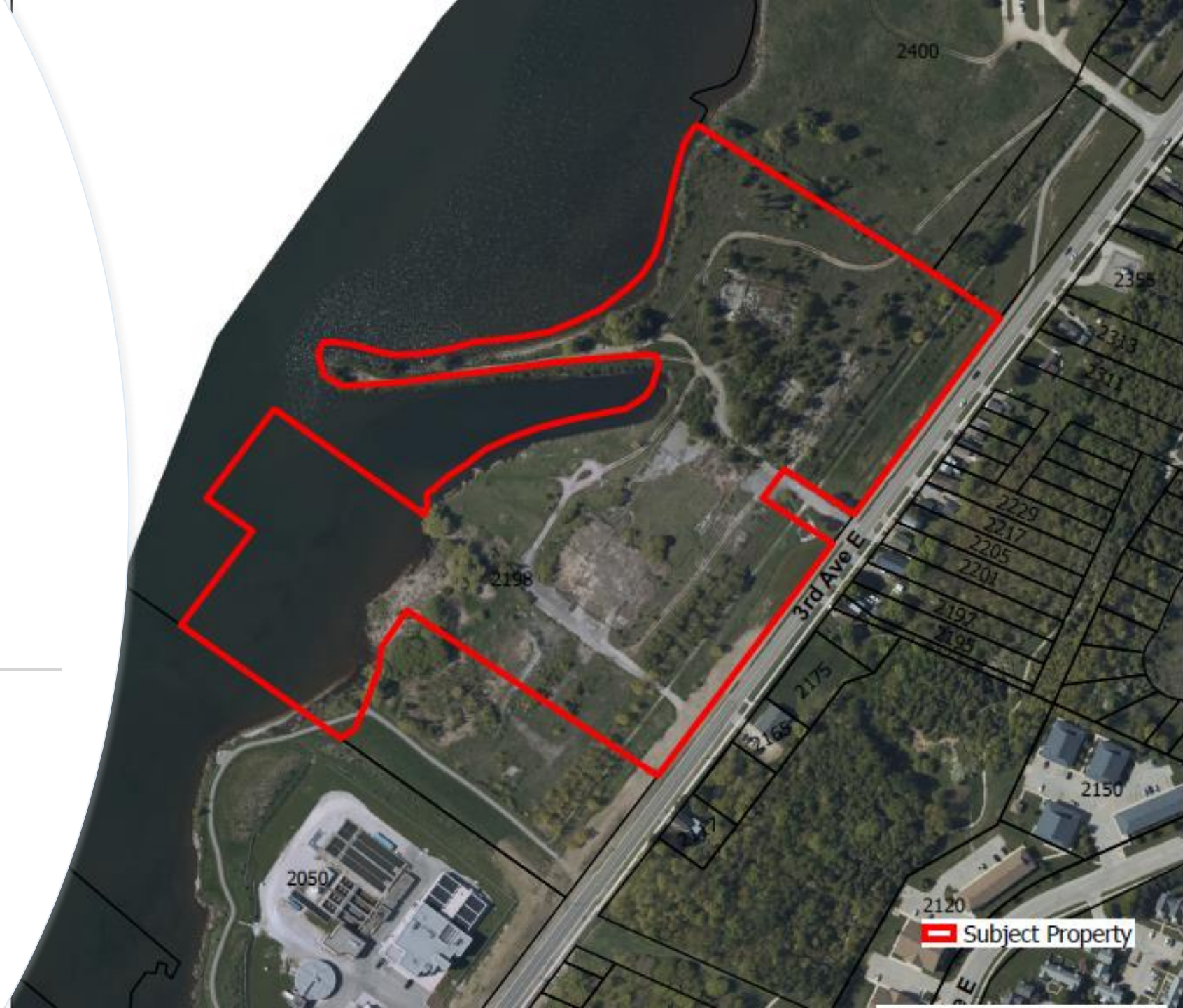
 Applicant Responsibility





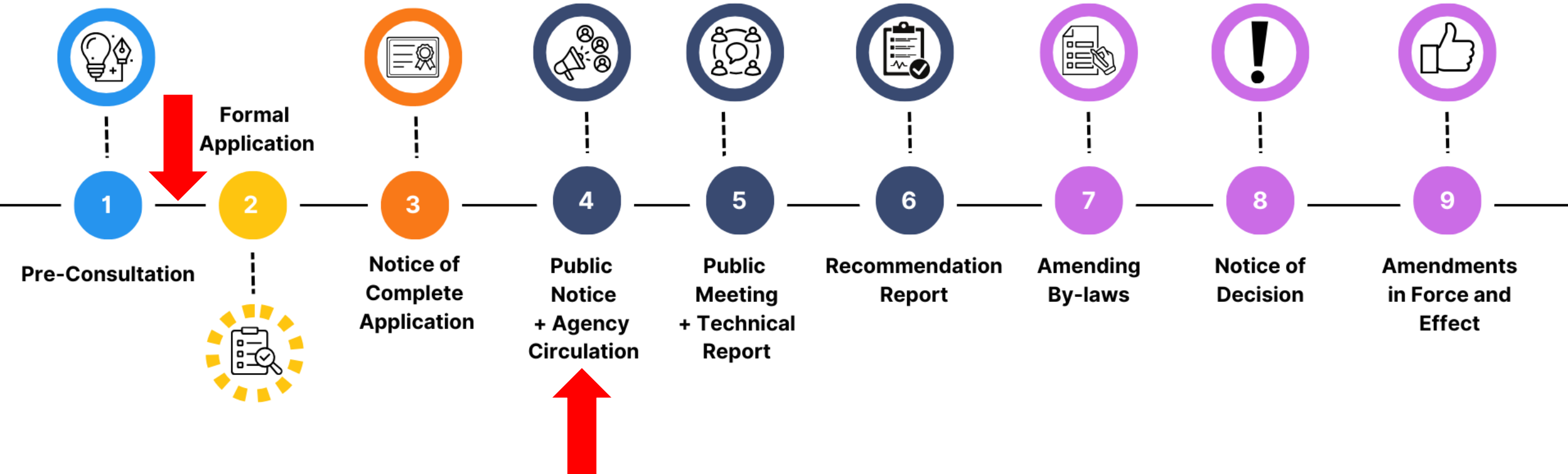



2198 3rd Avenue East




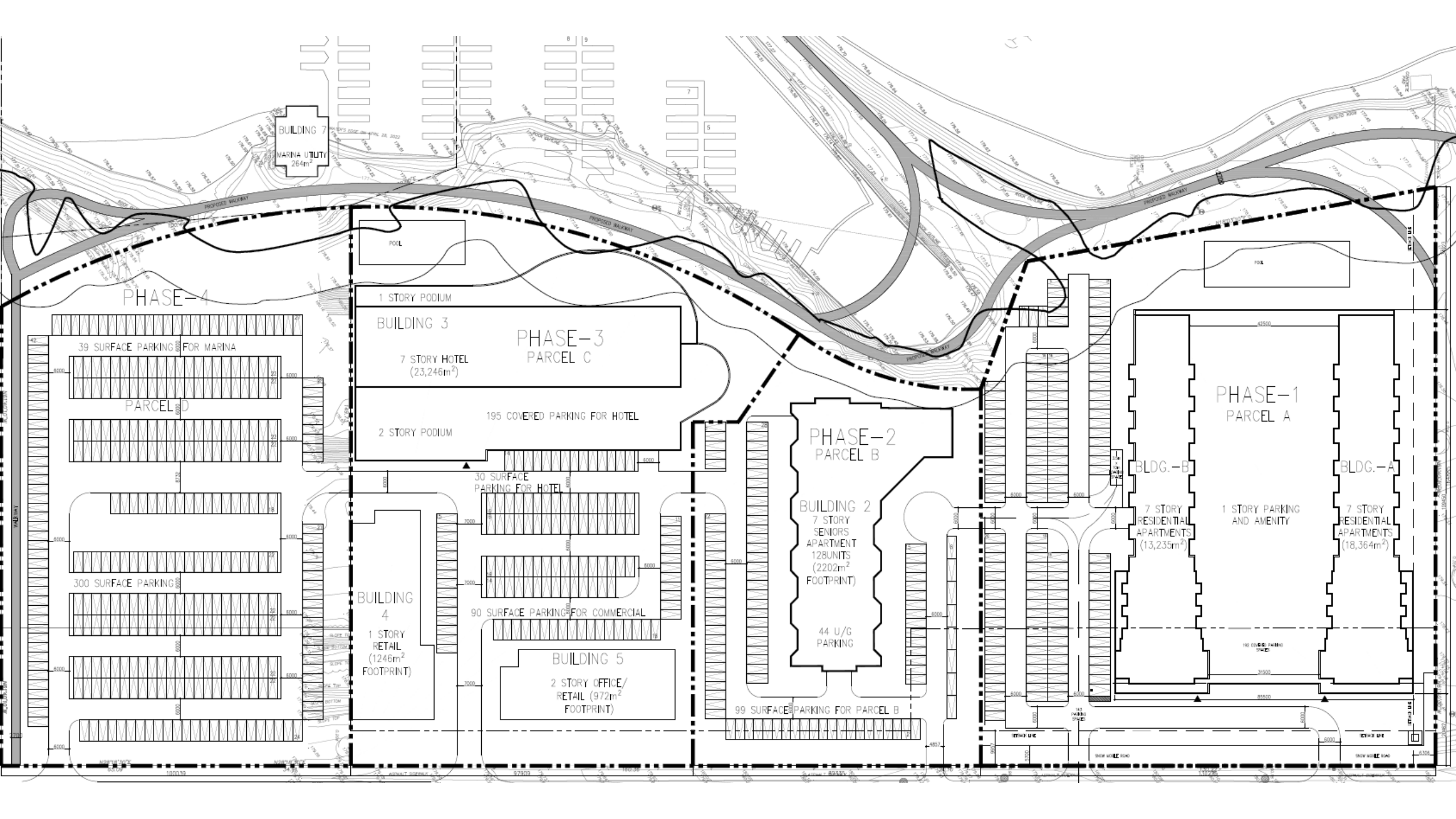
Policy

Development Overview



 City Responsibility

 Applicant Responsibility



BUILDING 7
MARINA UTILITY
264m²

PHASE-4

39 SURFACE PARKING FOR MARINA

PARCEL D

300 SURFACE PARKING

1 STORY PODIUM

BUILDING 3

7 STORY HOTEL
(23,246m²)

PHASE-3
PARCEL C

2 STORY PODIUM

195 COVERED PARKING FOR HOTEL

30 SURFACE
PARKING FOR HOTEL

BUILDING 4

1 STORY
RETAIL
(1246m²
FOOTPRINT)

90 SURFACE PARKING FOR COMMERCIAL

BUILDING 5

2 STORY OFFICE/
RETAIL (972m²
FOOTPRINT)

PHASE-2
PARCEL B

BUILDING 2
7 STORY
SENIORS
APARTMENT
128 UNITS
(2202m²
FOOTPRINT)

44 U/G
PARKING

99 SURFACE PARKING FOR PARCEL B

PHASE-1
PARCEL A

BLDG.-B

7 STORY
RESIDENTIAL
APARTMENTS
(13,235m²)

1 STORY PARKING
AND AMENITY

BLDG.-A

7 STORY
RESIDENTIAL
APARTMENTS
(18,364m²)

10 COVERED PARKING SPACES

Thank you!

- For more information, please visit www.owensound.ca/development

Sabine Robart, M.SC. (PL), MCIP, RPP
Manager of Planning & Heritage
Telephone: 519-376-4440 ext.
Email: srobert@owensound.ca

Jacklyn Iezzi, BES.
Senior Planner
Telephone: 519-376-4440 ext. 1261
Email: jiezzi@owensound.ca