

An aerial photograph of a city, likely Chicago, showing a dense residential area with a river winding through it. A dam is visible in the upper left, and a large body of water is in the upper right. The trees are in autumn colors. The text "Pedestrian Infrastructure Opportunities" is overlaid in the center.

Pedestrian Infrastructure Opportunities

An aerial photograph of a city, likely Minneapolis, Minnesota, showing a river (the Mississippi River) flowing through the center. A dam is visible in the upper left. The city is densely packed with buildings and trees, with a mix of urban and suburban areas. The text is overlaid on the image in white, bold, sans-serif font.

Pedestrian signal at 9th St W and 2nd Ave W

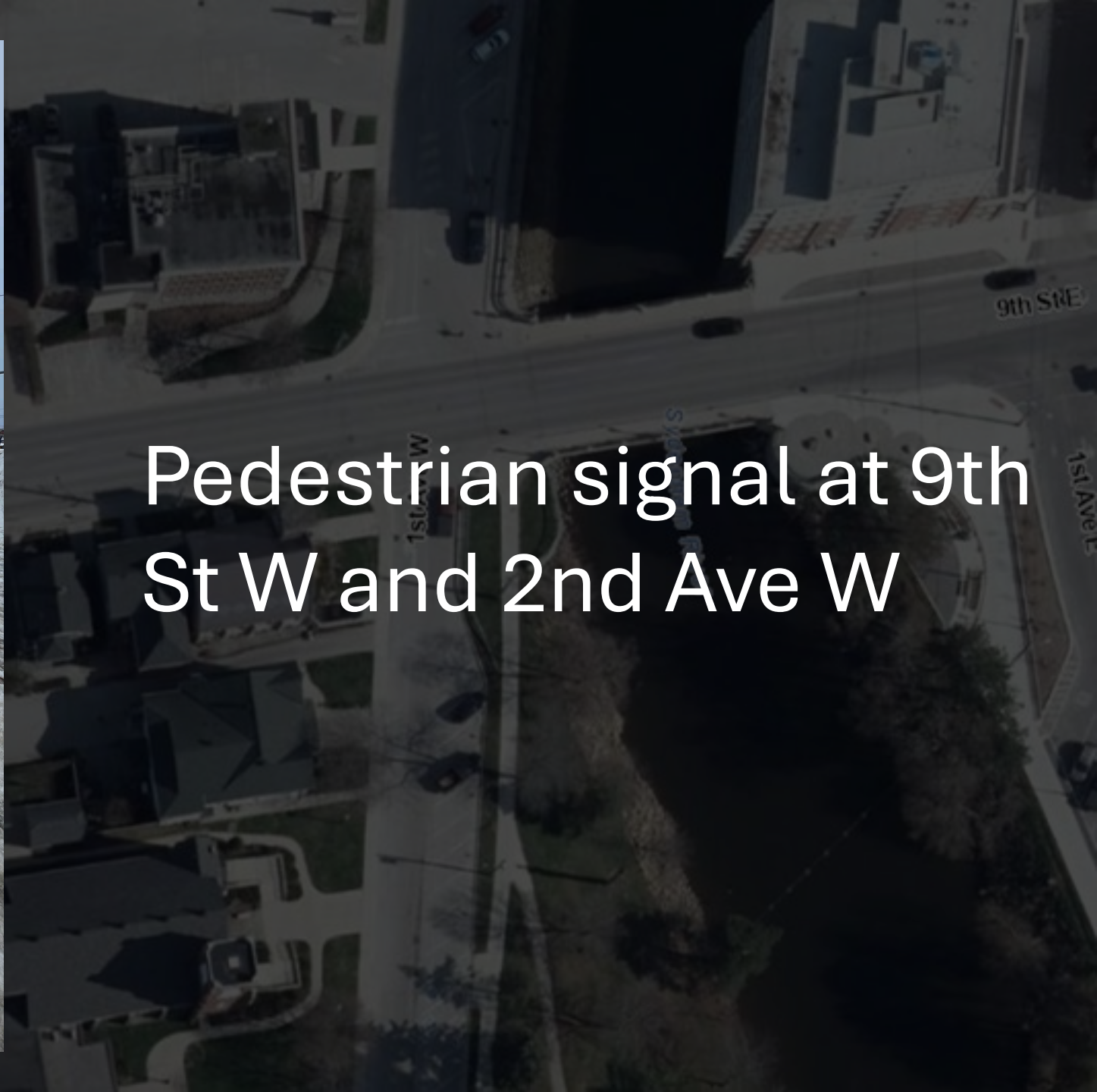
Broader approach to pedestrian signals

Step-by-step pedestrianization opportunities





Pedestrian signal at 9th
St W and 2nd Ave W



Pedestrian signal at 9th
St W and 2nd Ave W



Pedestrian signal at 9th
St W and 2nd Ave W

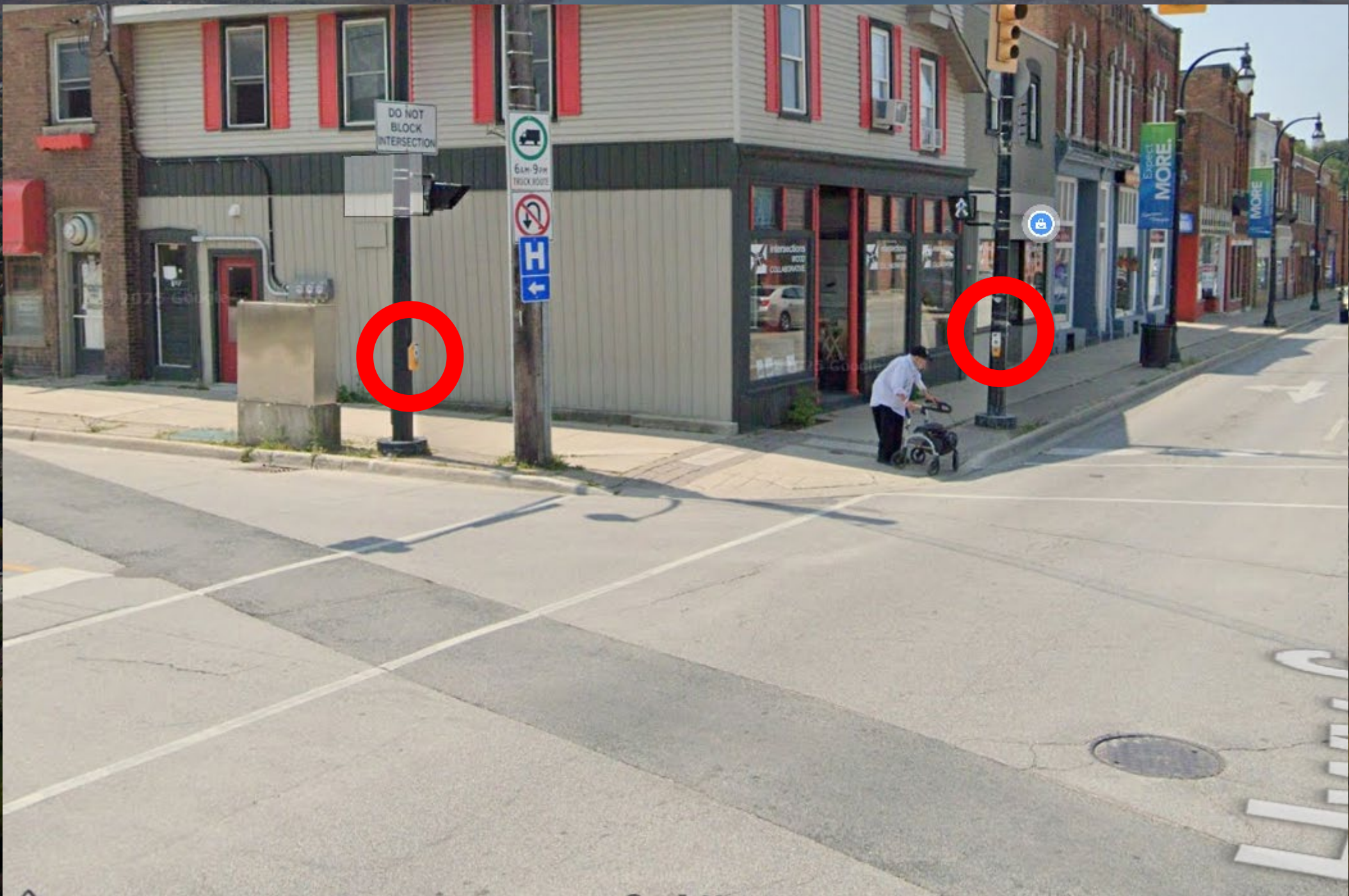
An aerial photograph of a suburban town, likely in the Midwest, featuring a prominent river that winds through the center. A dam is visible in the upper left quadrant, where the river flows into a larger body of water. The town is characterized by a grid of streets, numerous residential houses with lawns, and a dense canopy of trees showing autumn foliage in shades of green, yellow, and orange. A large, open field, possibly a school or park, is visible on the right side. The overall scene is a typical suburban landscape with a mix of built-up areas and natural greenery.

Broader Approach to Pedestrian Signals









DO NOT
BLOCK
INTERSECTION



Step-by-step Pedestrianization Opportunities



Step-by-step Pedestrianization Opportunities



Step-by-step Pedestrianization Opportunities



Step-by-step Pedestrianization Opportunities



PBIC Image Library

Step-by-step Pedestrianization Opportunities



TRENDING ON WHEELER IN THE MORNING

**WINNIPEG INSTALLING 13
TRAFFIC-CALMING CURBS TO
BOOST SAFETY**



Thanks!