

Owen
Sound
where you *want* to live



PEARSON
ENGINEERING

PUBLIC INFORMATION
CENTRE (PIC)

16TH STREET EAST
PEDESTRIAN TUNNEL
REHABILITATION AND
SIDEWALK
EXPANSION

CITY OF OWEN
SOUND

WELCOME

Welcome to the Public Information Centre for the 16th Street East Pedestrian Tunnel Rehabilitation and Sidewalk Expansion. The goals of this session are to:

- Present the existing condition of the pedestrian tunnel.
- Outline the proposed rehabilitation solutions to address the deteriorating structure.
- Highlight the proposed improvements to 16th Street East adjacent to tunnel structure.
- Gather your input, questions and feedback.

Representatives from the City of Owen Sound and their Engineering Consultant, Pearson Engineering Ltd, are collaborating on the detailed design and are here to discuss the project with you.

Project information, findings, and design details are available on the display boards. Please take time to review the material and feel free to ask any questions you may have.

You are encouraged to fill out a comment sheet. Any questions or comments can be directed to the contacts below.

City of Owen Sound

Mason Bellamy, C. Tech

Manager of Public Works & Engineering

mbellamy@owensound.ca

519-376-4440 ext. 3300

Pearson Engineering Ltd.

Jesse Borges, P. Eng., PMP

Structural Project Manager

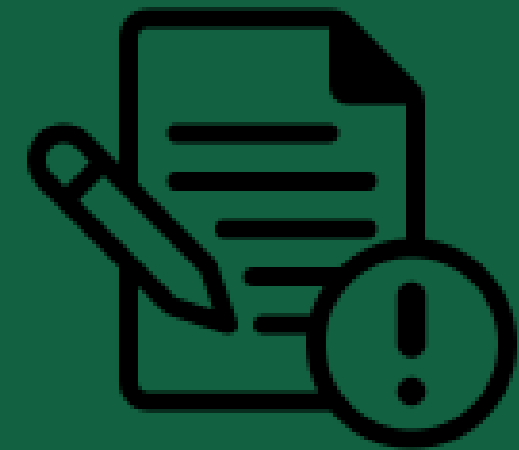
jborges@pearsoneng.com

226-256-7957 ext. 241



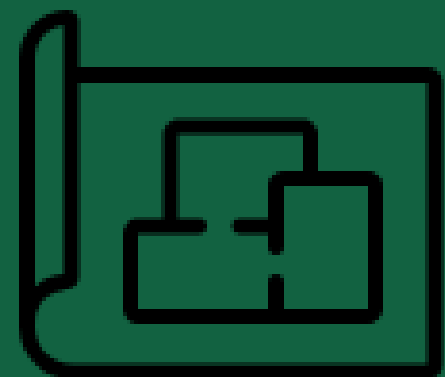
PEARSON
ENGINEERING

SUPPORTING STUDIES FOR THE PROJECT



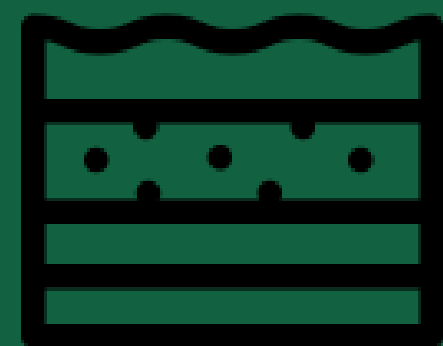
Existing Condition Assessment

Engineers performed a detailed inspection of the tunnel's structural components to document existing conditions, identify areas of deterioration, and determine the scope of repairs required for rehabilitation.



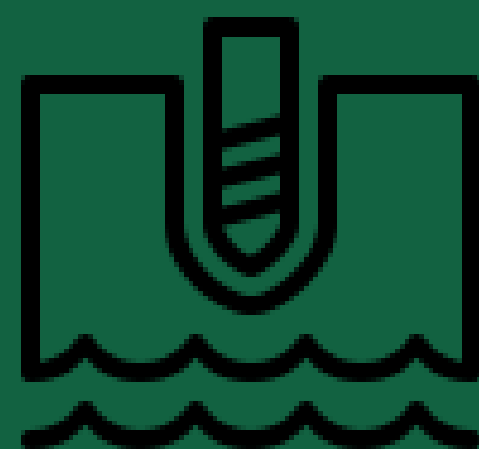
Topographic Survey

A topographic survey was completed to confirm property boundaries and existing conditions to ensure an accurate understanding of the site and the impacts to the surrounding properties.



Excess Soils Assessment

Onsite soil conditions were reviewed and sampled to ensure the disposal of excavated material off site during construction is completed in accordance with O. Reg. 406/19.



Geotechnical Investigation

A geotechnical investigation was completed to evaluate the soil around the tunnel and under the existing roadway to identify any ground-related conditions that may affect the long-term performance of the structure or roadway.

EXISTING CONDITIONS



The pedestrian tunnel is located over the Grey County CPR Rail Trail on 16th Street East (Hwy 26).



View of Structure Facing South.



View of Structure Facing North.



View of Graffiti on Interior Walls.



Exposed Deck Top and Loose Granular Embankments.



Spalling and Cracking at Interior Joints.



Water Infiltration at Interior Joints.

PROPOSED REHABILITATION

Improvements:

- Install waterproofing and concrete distribution slab on top of the tunnel.
- Repair all areas of deteriorated concrete on tunnel.
- Add lighting to the interior of the tunnel, paint over graffiti and replace hazard signs.
- Add new retaining walls to south end of tunnel to permit roadway widening.
- Widen south roadway embankment to construct new 1500mm wide sidewalk.
- Add new curb, grass boulevard and steel beam guiderail beside new sidewalk.
- Stabilize embankments with rock protection to prevent erosion.
- Replace 400m of asphalt roadway on south side of road.

Construction:

Construction is anticipated to take place between Spring 2026 and Fall 2026. During construction, 16th Street East will experience temporary lane closures.

Design:

The proposed design is considered preliminary and may be subject to change. City staff and Pearson Engineering Ltd. are continuing to refine the final design.

PROPOSED TUNNEL REHABILITATION



New Segmental Block Retaining Walls Beside the Tunnel.



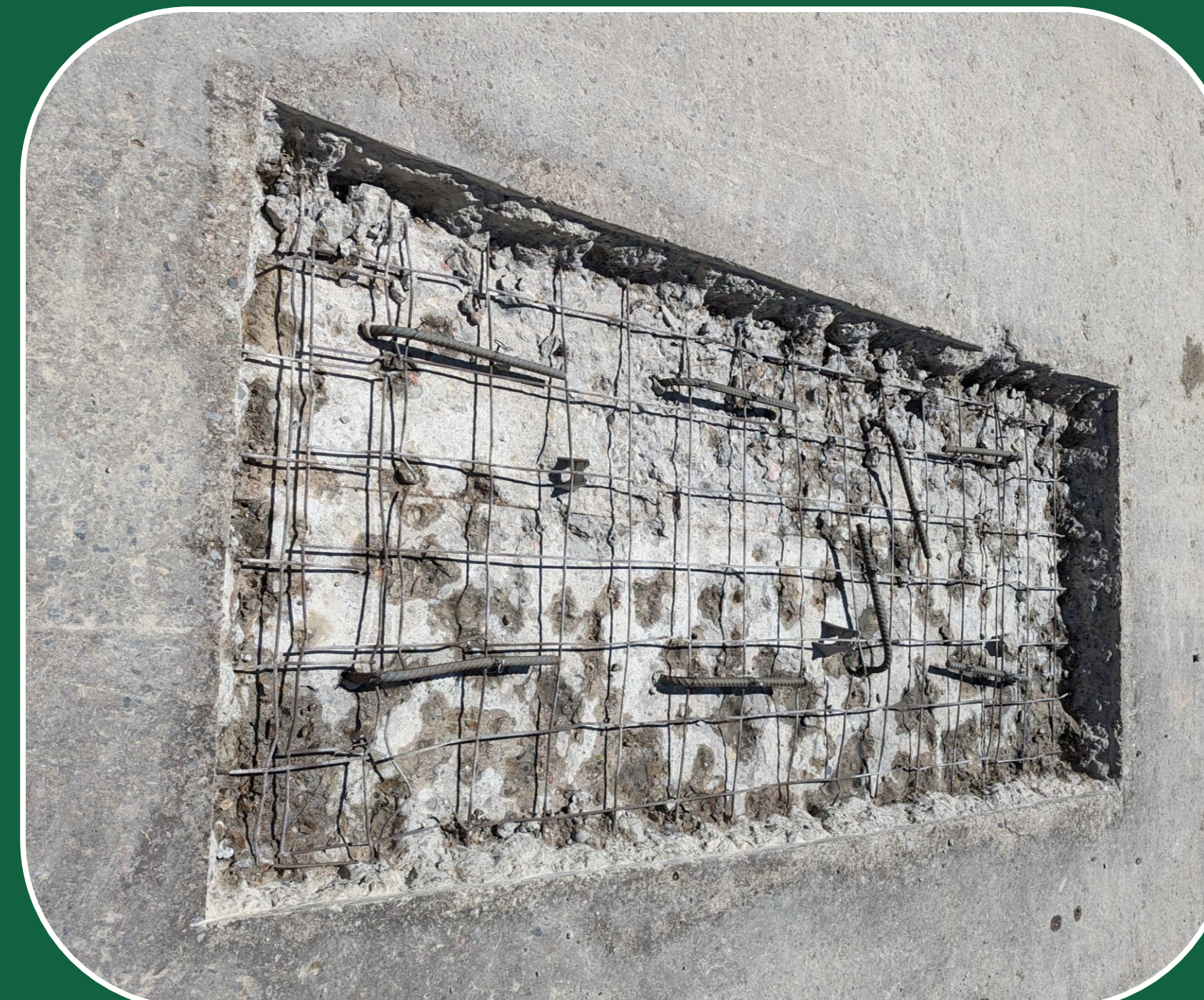
New Lighting Throughout the Tunnel.



Paint Over the Graffiti.



Replace Hazard Signs at Ends of Structure.



Repair Deteriorated Concrete on Tunnel.



New Waterproofing and Distribution Slab on Tunnel to Prevent Water Infiltration.

PROPOSED ROAD REHABILITATION



New Eastbound Asphalt Roadway.



New Sidewalk Along the Eastbound Lane.



New Steel Beam Guiderail Along the Eastbound Lane.



Erosion Protection Over New Roadway Embankments.



New Stormwater Catch Basins.



New Mountable Curb and Gutter Along the Eastbound Lane.

POTENTIAL IMPACTS TO LOCAL RESIDENTS

Construction Work

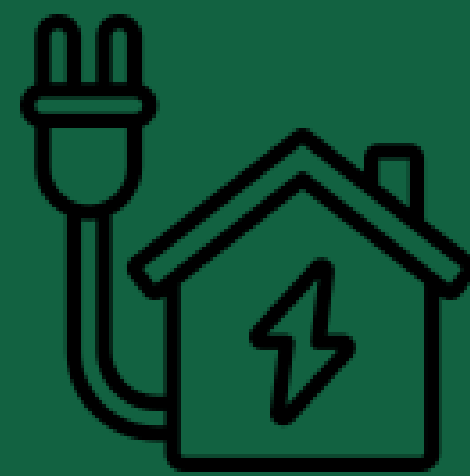


To mitigate impacts to local residents, construction will be limited to 7am to 7pm each day. No weekend or stat holiday work permitted. The contractor will control dust on site and will ensure the construction site remains clean as much as possible.



Traffic Flow Interruptions

Temporary lane closures will be established during construction resulting in minor traffic impacts. Temporary traffic signals will be installed to maintain traffic flow throughout the work.



Utility Disruptions

There is a potential of limited utility disruptions throughout construction. Where service disruptions are anticipated, notices will be issued to residents.



Tree Removals

Tree removals on site will be limited as much as possible. Permission will be requested if any trees are being removed from private properties.



Recreational Trail

The City will work with the Grey County to keep the public up-to-date on temporary closures of the trail system during construction.

